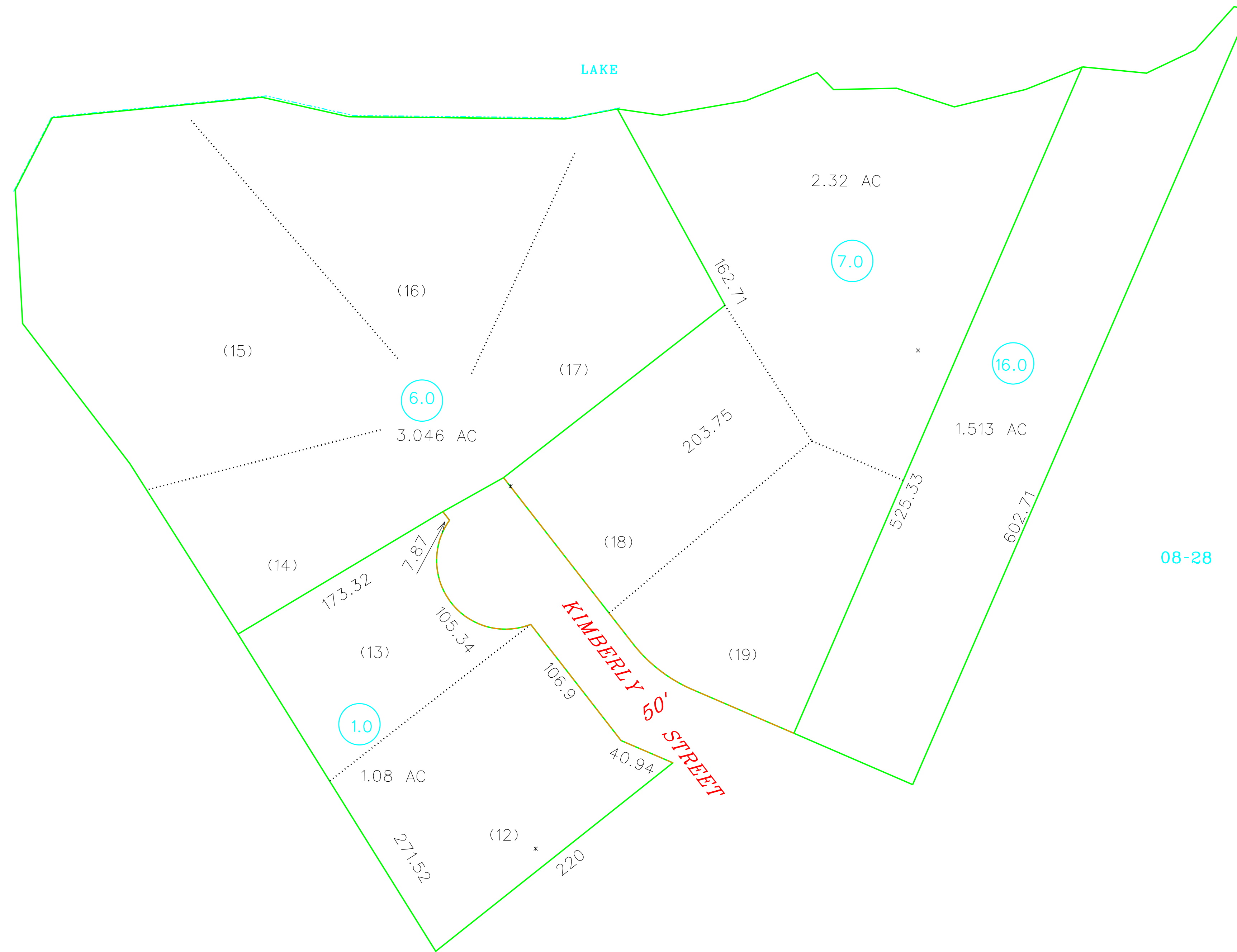
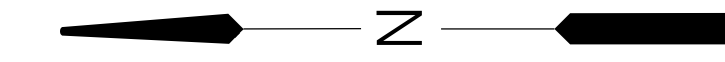


08-2005



08-28

STONEHEDGE ADD. #1

For Tax Purposes Only

Prepared by
RALEIGH COUNTY ASSESSOR'S OFFICE
BECKLEY, WV

LEGEND

Property line		Original lot line	
Edge of pavement or roadway		Deed lot number	
Corporation line		Parcel or index number	
District line		Improvement	
County line		Railroad	
Waterways			
2010 CHANGE			

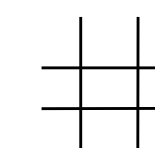
REVISIONS

1	11/12/97 CLG
2	07/17/98 CLG
3	03/26/01 CLG
4	06/04/02 CLG
5	
6	
7	
8	

RESTRICTION

All tax maps created under the provisions of reappraisal legislation are the property of Raleigh County West Virginia and the reproduction, copying distribution or sale of such tax maps or any copies thereof without the written permission of the Raleigh County Assessor is prohibited by law.

KEY MAP



COUNTY OF RALEIGH

Office of Assessor
Beckley, W.Va.

SHADY SPRING DISTRICT
DISTRICT 08 MAP NO. 500-2

Date, Aerial Photography: Photo No:
Date, Map: AUGUST 27, 1996
Scale: 1" = 50'