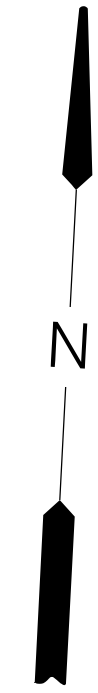
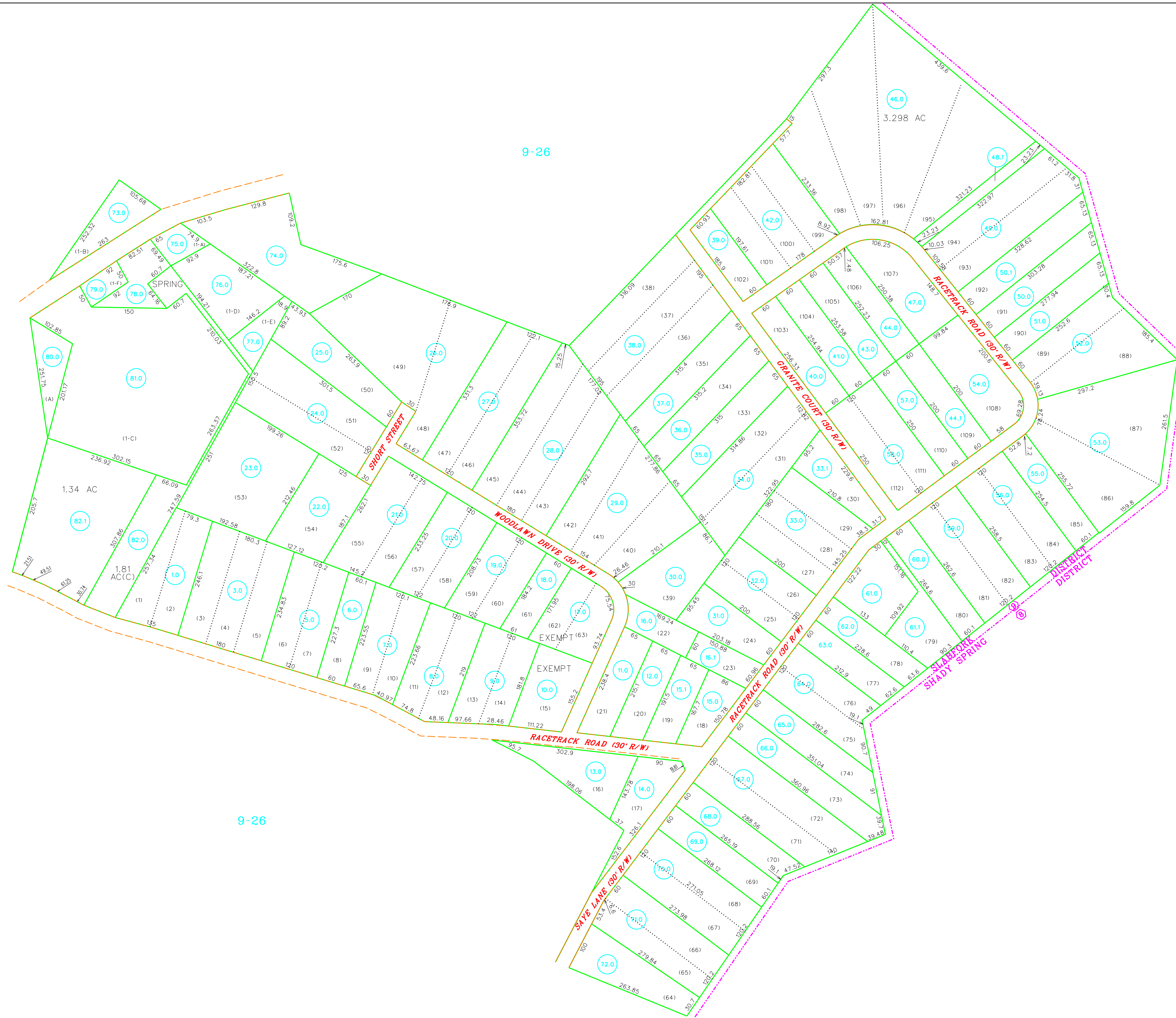


9-26

9-26

8-37



LILLY COURT ADDITION

For Tax Purposes Only

Prepared by  
RALEIGH COUNTY ASSESSOR'S OFFICE  
BECKLEY, WV

LEGEND

|                             |   |                        |      |
|-----------------------------|---|------------------------|------|
| Property line               | — | Original lot line      | —    |
| Edge of pavement or roadway | — | Deed lot number        | (15) |
| Corporation line            | — | Parcel or index number | (9)  |
| District line               | — | Improvement            | o    |
| County line                 | — | Railroad               | —    |
| Waterways                   | — |                        |      |
| 2010 CHANGE                 | — |                        |      |

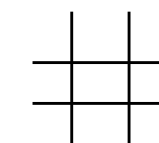
REVISIONS

|   |              |
|---|--------------|
| 1 | 05/19/08 ADL |
| 2 |              |
| 3 |              |
| 4 |              |
| 5 |              |
| 6 |              |
| 7 |              |
| 8 |              |

RESTRICTION

All tax maps created under the provisions of reappraisal legislation are the property of Raleigh County West Virginia and the reproduction, copying, distribution or sale of such tax maps or any copies thereof without the written permission of the Raleigh County Assessor is prohibited by law.

KEY MAP



COUNTY OF RALEIGH

Office of Assessor  
Beckley, W.Va.

SLAB FORK DISTRICT  
DISTRICT 09 MAP NO. 26C

Date, Aerial Photography:  
Photo No:

Date, Map: APRIL 13, 1998  
Scale: 1" = 100'