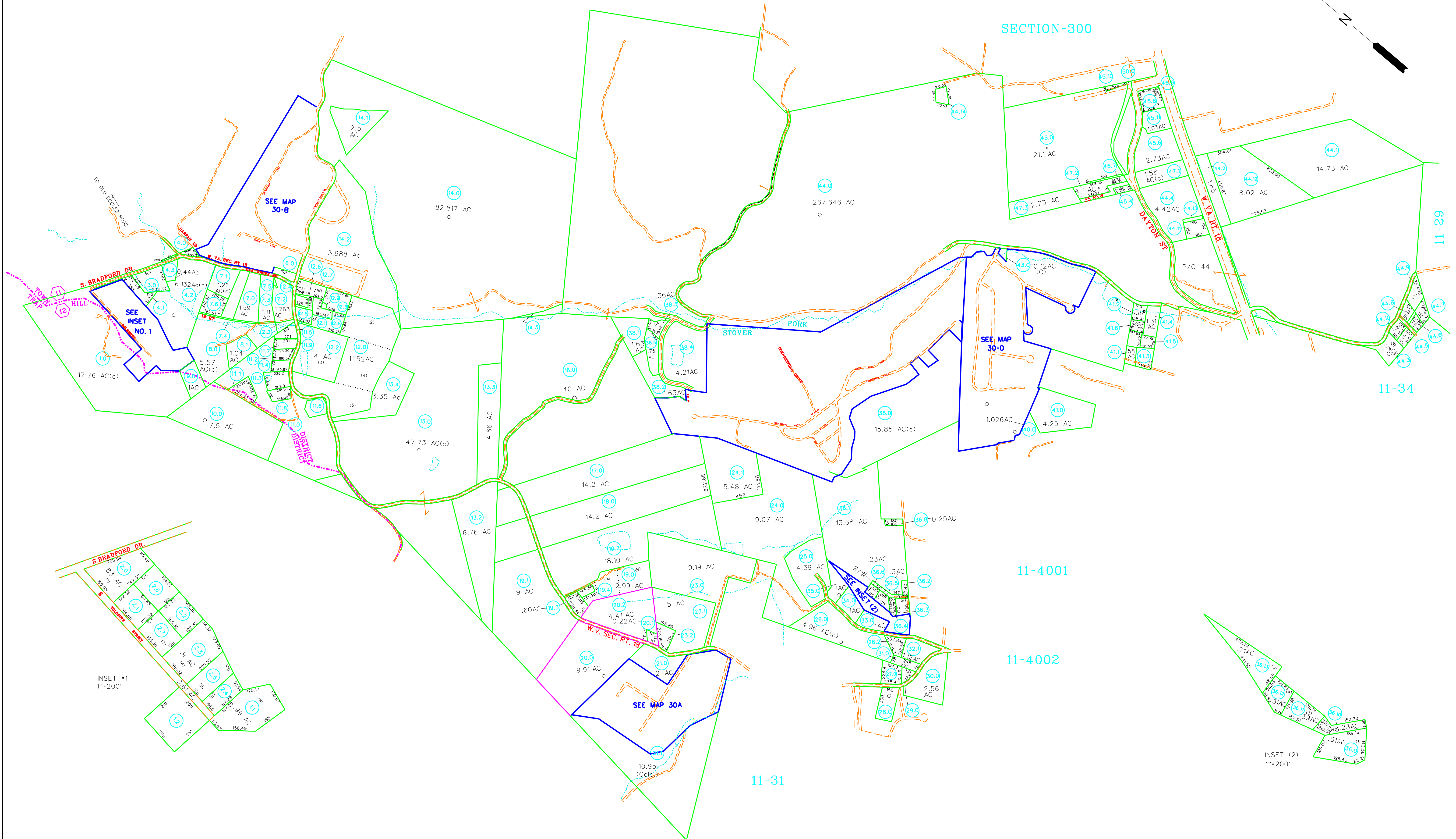


SECTION-300



11-29

11-34

11-4001

11-4002

11-31

For Tax Purposes Only

Prepared by
RALEIGH COUNTY ASSESSOR'S OFFICE
BECKLEY, WV

LEGEND

Property line	—	Original lot line	— (15)
Edge of pavement or roadway	—	Deed lot number	(95)
Corporation line	—	Parcel index number	o
District line	—	Improvement	o
County line	—	Railroad	—
Waterways	—		
2019 CHANGE	—		

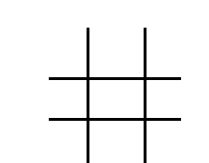
REVISIONS

1	05/16/11	TPB
2	08/02/11	TPB
3	10/17/12	PRB
4	07/09/13	BIE
5	08/08/14	BIE
6	07/31/15	PRB
7	02/11/16	PRB
8	10/13/16	BIE
9	10/31/18	BIE

RESTRICTION

All tax maps created under the provisions of reappraisal legislation are the property of Raleigh County West Virginia and the reproduction, copying distribution or sale of such tax maps or any copies thereof without the written permission of the Raleigh County Assessor is prohibited by law.

KEY MAP



COUNTY OF RALEIGH

Office of Assessor
Beckley, W.Va.

TOWN DISTRICT
District 11 Map No. 30

Date, Aerial Photography: Photo No:
Date, Map: AUG. 23, 1996
Scale: 1"=400'