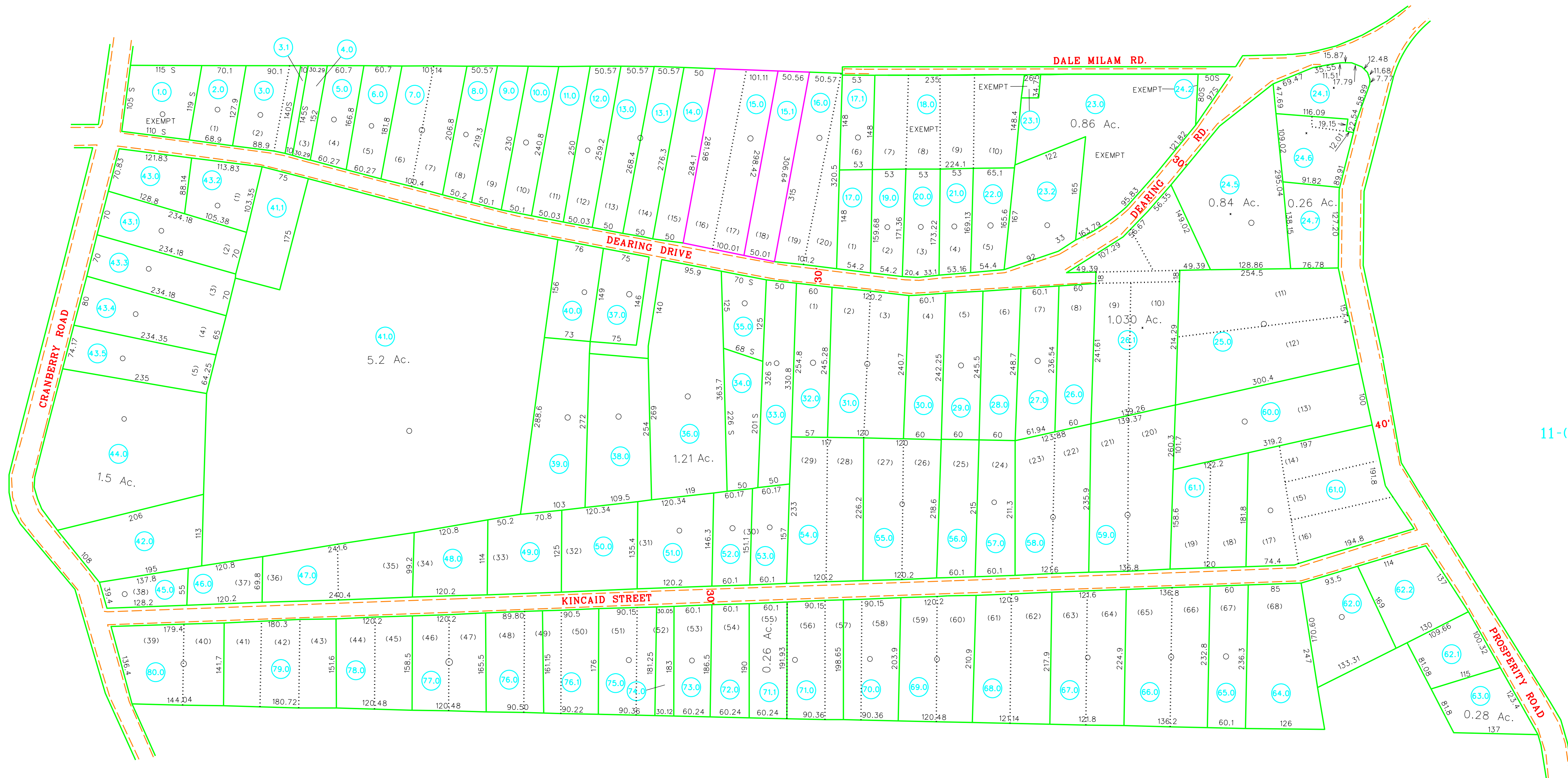
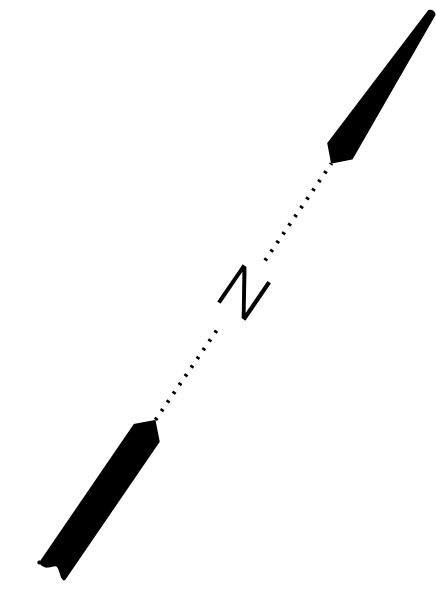


11-(700-3)



11-(700-2)

11-13

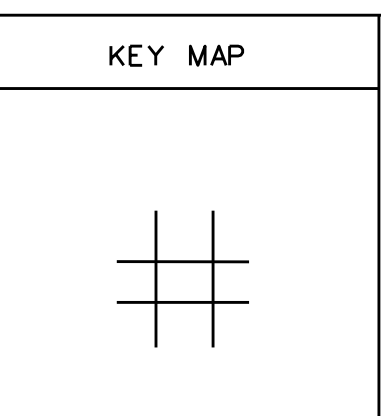
11-(700-5)

For Tax Purposes Only  
Prepared by  
RALEIGH COUNTY ASSESSOR'S OFFICE  
BECKLEY, WV

LEGEND	
Property line	—
Edge of pavement or roadway	—
Corporation line	—
District line	—
County line	—
Waterways	—
2010 CHANGE	—
Original lot line	.....
Deed lot number	(15)
Parcel index number	(99)
Improvement	o
Railroad	—+—

REVISIONS	
1	04/07/97 SCR
2	01/09/98 SCR
3	06/26/00 CLG
4	10/17/06 CLG
5	07/26/07 ADL
6	10/15/07 ADL
7	04/06/10 TPB
8	

RESTRICTION  
All tax maps created under the provisions of reappraisal legislation are the property of Raleigh County West Virginia and the reproduction, copying distribution or sale of such tax maps or any copies thereof without the written permission of the Raleigh County Assessor is prohibited by law.



COUNTY OF RALEIGH  
Office of Assessor  
Beckley, W.Va.

TOWN DISTRICT  
District 11 Map No. 700-4  
Date, Aerial Photography: Photo No:  
Date, Map: 21 Apr 1996  
Scale: 1" = 100'