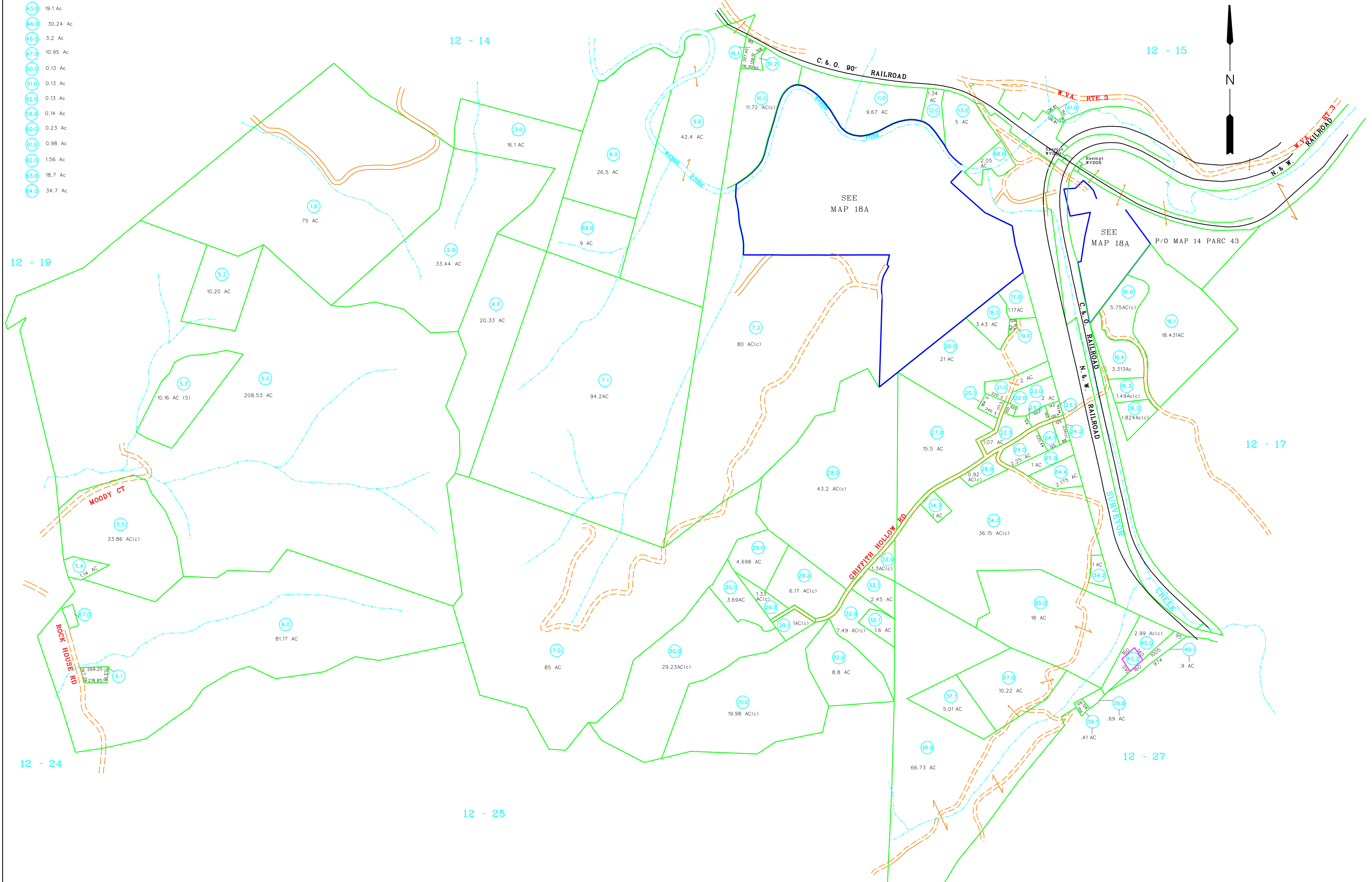


- 43.0 19.1 Ac
- 44.0 30.24 Ac
- 45.0 3.2 Ac
- 47.0 10.95 Ac
- 50.0 0.13 Ac
- 51.0 0.13 Ac
- 52.0 0.13 Ac
- 58.0 0.14 Ac
- 60.0 0.23 Ac
- 61.0 0.98 Ac
- 62.0 1.56 Ac
- 63.0 18.7 Ac
- 64.0 34.7 Ac



For Tax Purposes Only  
 Prepared by  
**RALEIGH COUNTY ASSESSOR'S OFFICE**  
 BECKLEY, WV

LEGEND	
Property line	Original lot line
Edge of pavement or roadway	Deed lot number (15)
Corporation line	Parcel or index number
District line	Improvement
County line	Railroad
Waterways	
2013 CHANGE	

REVISIONS	
1	12/20/06 CLG
2	10/02/07 ADL
3	01/25/08 ADL
4	05/12/08 ADL
5	04/07/09 TPB
6	04/05/11 TPB
7	07/28/11 TPB
8	10/17/12 PRB
9	10/01/13 CDB

**RESTRICTION**

All tax maps created under the provisions of reappraisal legislation are the property of Raleigh County West Virginia and the reproduction, copying, distribution or sale of such tax maps or any copies thereof without the written permission of the Raleigh County Assessor is prohibited by law.

**KEY MAP**

**COUNTY OF RALEIGH**  
 Office of Assessor  
 Beckley, W.Va.

**TRAP HILL DISTRICT**  
 District 12      Map No. 18

Date, Aerial Photography:      Date, Map: MAY, 1999  
 Photo No:      Scale: 1" = 400'