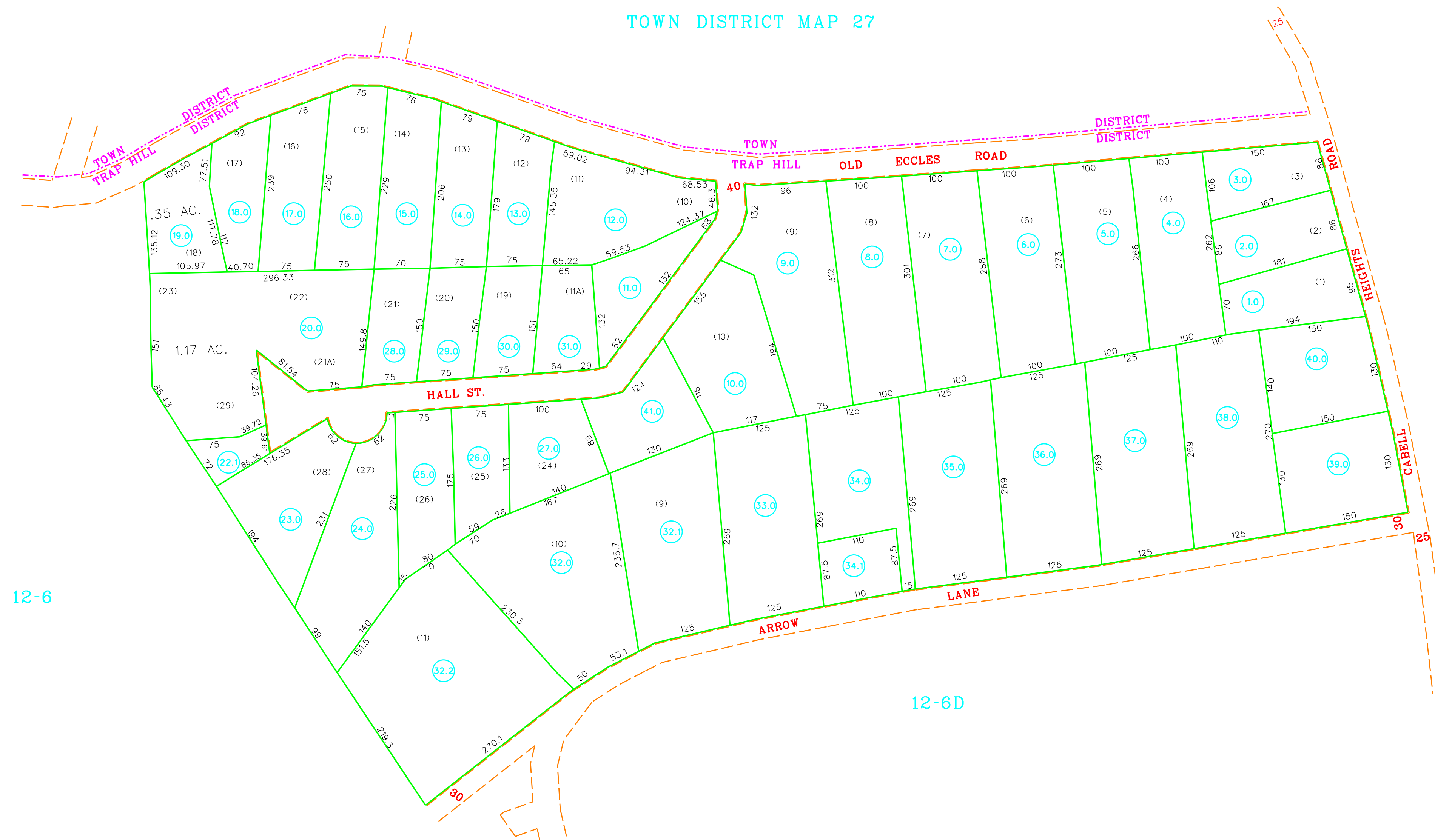


TOWN DISTRICT MAP 27



12-6

12-6D



For Tax Purposes Only Prepared by <b>RALEIGH COUNTY ASSESSOR'S OFFICE</b> BECKLEY, WV	<b>LEGEND</b>	<b>REVISIONS</b>	<b>RESTRICTION</b>	<b>KEY MAP</b>	<h1 style="margin: 0;">COUNTY OF RALEIGH</h1> <p style="margin: 0;">Office of Assessor Beckley, W.Va.</p>	TRAP HILL DISTRICT District 12    Map No. 06E
	Property line ——— Edge of pavement or roadway ——— Corporation line - - - - - District line - - - - - County line - - - - - Waterways - - - - - 2010 CHANGE - - - - -	Original lot line ..... Deed lot number (15) Parcel or index number (99) Improvement o Railroad ———	1 2 3 4 5 6 7 8	All tax maps created under the provisions of reappraisal legislation are the property of the State of West Virginia and the reproduction, copying, distribution or sale of such tax maps or any copies thereof without the written permission of the State Tax Commissioner is prohibited by law.		