

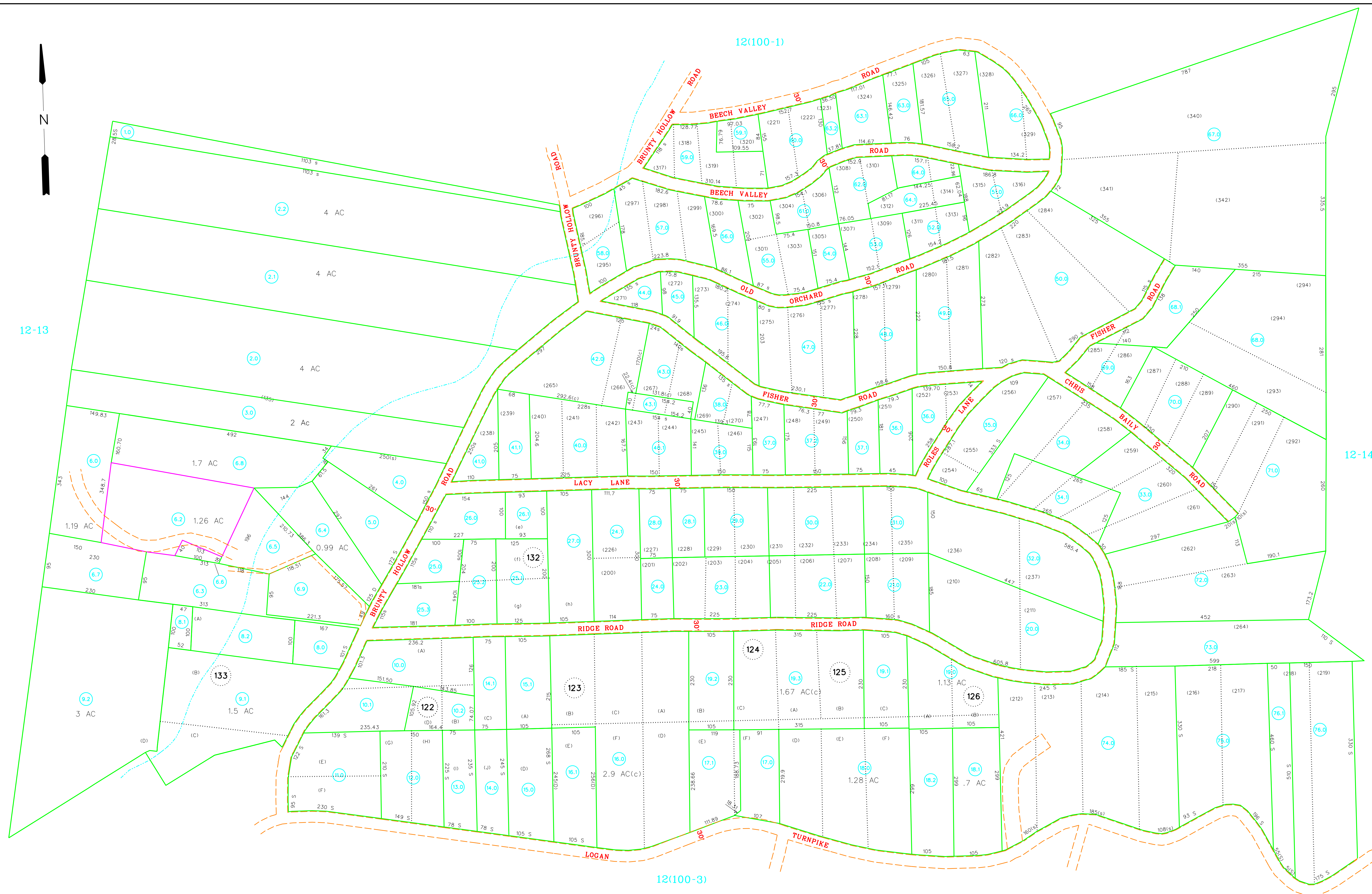


12-13

12-14

12(100-1)

12(100-3)



For Tax Purposes Only

Prepared by  
RALEIGH COUNTY ASSESSOR'S OFFICE  
BECKLEY, WV

LEGEND

Property line		Original lot line	
Edge of pavement or roadway		Deed lot number	(15)
Corporation line		Parcel or index number	(9)
District line		Improvement	o
County line		Railroad	
Waterways			
2017 CHANGE			

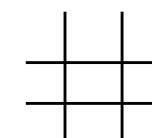
REVISIONS

1	09/29/99	CLG
2	06/14/00	CLG
3	10/21/03	CLG
4	02/07/08	ADL
5	03/27/12	PRB
6	08/25/17	BIE
7		
8		

RESTRICTION

All tax maps created under the provisions of reappraisal legislation are the property of the State of West Virginia and the reproduction, copying, distribution or sale of such tax maps or any copies thereof without the written permission of the State Tax Commissioner is prohibited by law.

KEY MAP



# COUNTY OF RALEIGH

Office of Assessor  
Beckley, W.Va.

TRAP HILL DISTRICT  
District 12 Map No.100-2

Date, Aerial Photography:  
Photo No:

Date, Map: SEPT. 1999  
Scale: 1"=100'