



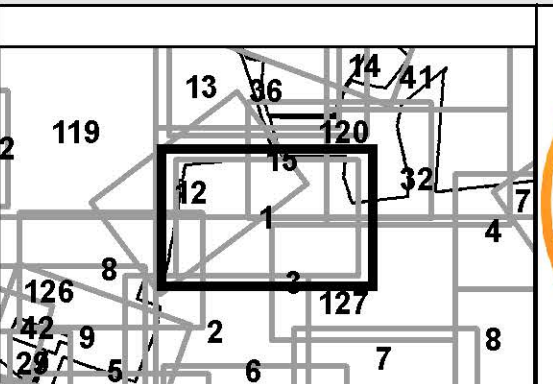
FOR TAX PURPOSES ONLY
LANDMARK
 geospatial

Legend	
	District Boundary
	Previous Deed
	Property
	Road Easement
	Railroad Right of Way
	Road Right of Way
	River
	Deed lot Number (16)
	Parcel or Index Number UNKNOWN
	Improvement
	Cemetery
	School
	Church

Restriction

All tax maps created under the provisions of reappraisal legislation are the property of the Assessor of Randolph County, West Virginia and the reproduction, copying, modification, distribution or sale of such tax maps or any copies thereof without the written permission of the Randolph County Assessor is prohibited by law.

Revisions			
1	6-30-1964	10	OGIS R.R.O. 3-1994
2	D.F. 7-1980	11	OGIS J.E.B. 4-20-1995
3	T.R.L. 7-1983	12	OGIS J.E.B. 5-1-1996
4	T.R.L. 7-1984	13	SLS INC. J.W.M. 3-1997
5	D.F. 7-1-1988	14	P.K.Y. 7-1-1998
6	D.F. 7-1-1989	15	P.K.Y. 7-1-1999
7	OGIS D.S.H. 2-23-1991	16	P.K.Y. 7-1-2000
8	OGIS T.L. 4-30-1992	17	P.K.Y. 7-1-2003
9	OGIS S.A.J. 4-24-1993	18	P.K.Y. 7-1-2004
19	A.K.B. 7-1-2006	28	
20	A.K.B. 7-1-2007	29	
21	A.K.B. 7-1-2008	30	
22	A.K.B. 7-1-2009	31	
23	A.L.I. 7-1-2010	32	
24	S.T.P. 7-1-2012	33	
25	S.T.P. 7-1-2013	34	
26	S.T.P. 7-1-2015	35	
27		36	



RANDOLPH COUNTY ELKINS CORP
 Assessor's Office
 Phyllis K. Yokum, Assessor
 ELKINS, WV

District 05 Map No. 1
 Date of Publication: 1/28/2019
 Scale: 1"=100'