

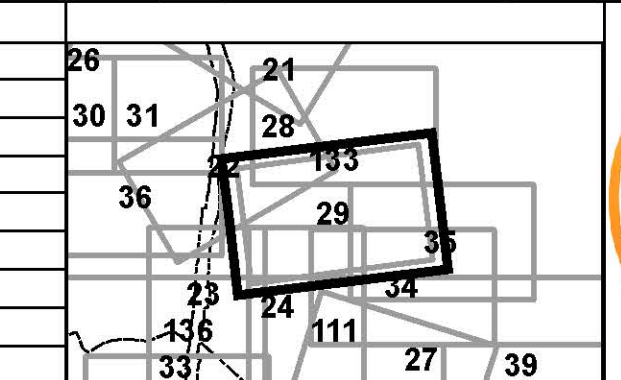
FOR TAX PURPOSES ONLY
LANDMARK
 geospatial

Legend	
	District Boundary
	Previous Deed
	Property
	Road Easement
	Railroad Right of Way
	Road Right of Way
	River
	Deed lot Number
	Parcel or Index Number
	UNKNOWN
	Improvement
	Cemetery
	School
	Church

Restriction

All tax maps created under the provisions of reappraisal legislation are the property of the Assessor of Randolph County, West Virginia and the reproduction, copying, modification, distribution or sale of such tax maps or any copies thereof without the written permission of the Randolph County Assessor is prohibited by law.

Revisions		
1	D.R. 7-1-1980	19
2	N.S. 4-1981	20
3	C.P. 7-1-1985	21
4	N.C.S. 7-1-1986	22
5	D.F. 7-1-1988	23
6	R.E.B. 7-1-1989	24
7	OGIS J.E.B. 4-15-1992	25
8	OGIS J.E.B. 4-20-1993	26
9	P.K.Y. 7-1-2004	27
10	A.K.B. 7-1-2006	28
		29
		30
		31
		32
		33
		34
		35
		36



RANDOLPH COUNTY LEADSVILLE
 Assessor's Office
 Phyllis K. Yokum, Assessor
 ELKINS, WV

District 10 Map No. 29
 Date of Publication: 1/28/2019
 Scale: 1"=100'