

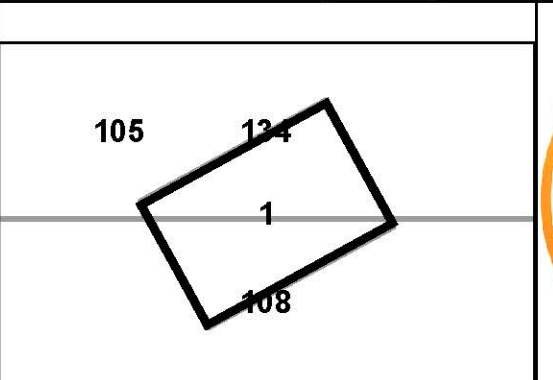


Legend	
	District Boundary
	Previous Deed
	Property
	Road Easement
	Railroad Right of Way
	Road Right of Way
	River
	Deed lot Number (16)
	Parcel or Index Number
	UNKNOWN
	Improvement
	Cemetery
	School
	Church

**Restriction**

All tax maps created under the provisions of reappraisal legislation are the property of the Assessor of Randolph County, West Virginia and the reproduction, copying, modification, distribution or sale of such tax maps or any copies thereof without the written permission of the Randolph County Assessor is prohibited by law.

Revisions					
1	6-30-1964	10	OGIS J.E.B. 3-15-1994	19	S.T.P. 7-1-2012
2	D.F. 7-1980	11	OGIS J.E.B. 4-20-1995	20	S.T.P. 7-1-2013
3	L.E.S. 7-1-1983	12	OGIS J.E.B. 5-1-1996	21	S.T.P. 7-1-2015
4	T.R.L. 7-1984	13	SLS INC. J.W.M. 4-1997	22	S.T.P. 5-18-2017
5	C.P. 7-1-1986	14	P.K.Y. 7-1-1998	23	
6	N.C.S. 7-1-1987	15	P.K.Y. 7-1-2000	24	
7	OGIS 3-3-1991	16	P.K.Y. 7-1-2001	25	
8	OGIS J.E.B. 4-15-1992	17	P.K.Y. 7-1-2002	26	
9	OGIS J.E.B. 4-26-1993	18	A.K.B. 7-1-2006	27	
				28	
				29	
				30	
				31	
				32	
				33	
				34	
				35	
				36	



**RANDOLPH COUNTY**  
 Assessor's Office  
 Phyllis K. Yokum, Assessor  
 ELKINS, WV

**MIDDLE FORK**  
 District 11 Map No. 1  
 Date of Publication: 1/28/2019  
 Scale: 1"=100'