

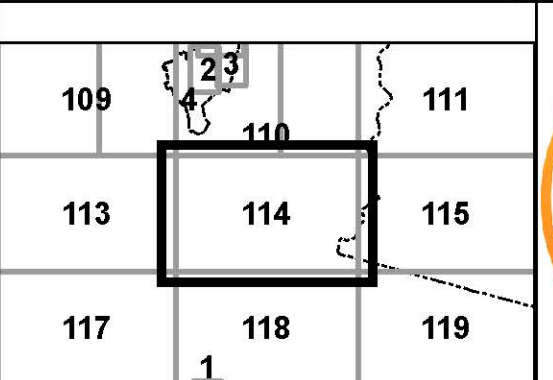
FOR TAX PURPOSES ONLY  
**LANDMARK**  
 geospatial

Legend	
	District Boundary
	Previous Deed
	Property
	Road Easement
	Railroad Right of Way
	Road Right of Way
	River
	Deed Lot Number
	Parcel or Index Number
	UNKNOWN
	Improvement
	Cemetery
	School
	Church

**Restriction**

All tax maps created under the provisions of reappraisal legislation are the property of the Assessor of Randolph County, West Virginia and the reproduction, copying, modification, distribution or sale of such tax maps or any copies thereof without the written permission of the Randolph County Assessor is prohibited by law.

Revisions					
1	6-30-1964	10	OGIS T.L. 4-30-1992	19	PK.Y. 7-1-2002
2	D.F. 11-26-1980	11	OGIS T.R.L. 5-6-1993	20	PK.Y. 7-1-2003
3	D.F. 7-1-1983	12	OGIS J.E.B. 3-15-1994	21	PK.Y. 7-1-2004
4	L.E.S. 7-1-1983	13	OGIS J.E.B. 4-20-1995	22	A.K.B. 7-1-2005
5	T.R.L. 7-1-1986	14	OGIS J.E.B. 5-1-1996	23	A.K.B. 7-1-2007
6	D.F. 7-1-1987	15	SLS INC. J.W.M. 3-1997	24	A.K.B. 7-1-2008
7	D.F. 7-1-1988	16	SLS INC. D.S.W. 4-23-1998	25	A.K.B. 7-1-2009
8	R.E.B. 7-1-1989	17	PK.Y. 7-1-1999	26	S.T.P. 7-1-2013
9	OGIS S.A.J. 3-6-1991	18	PK.Y. 7-1-2001	27	S.T.P. 7-1-2016
		28	S.T.P. 5-18-2017		



**RANDOLPH COUNTY**  
 Assessor's Office  
 Phyllis K. Yokum, Assessor  
 ELKINS, WV

**NEW INTEREST**  
 District 15 Map No. 114  
 Date of Publication: 1/28/2019  
 Scale: 1"=400'