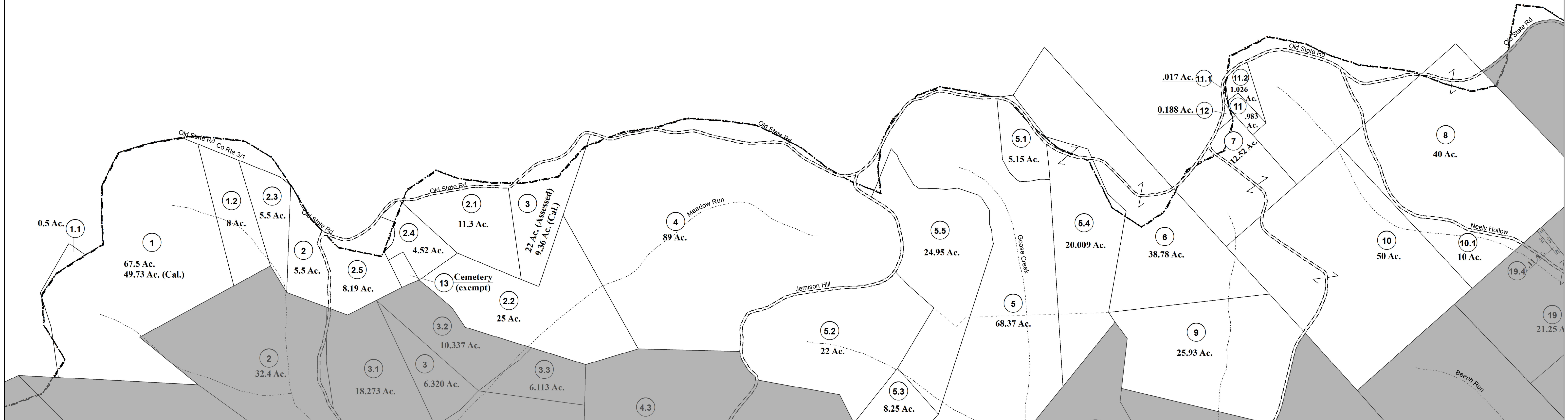


PLEASANTS COUNTY



FOR TAX PURPOSES ONLY
 Prepared by
RITCHIE COUNTY
ASSESSOR'S OFFICE
ARLENE MOSSOR, ASSESSOR
HARRISVILLE, W.Va.

LEGEND

Property line	—————
Edge of pavement or roadway	-----
Corporation line
District line	- - - - -
County line	-----
Waterways	~~~~~

LEGEND

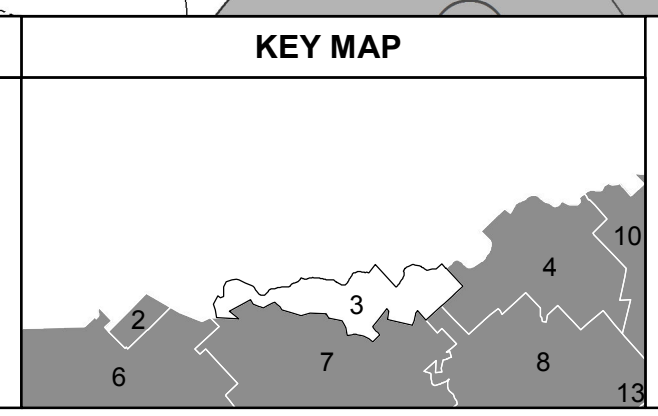
Original lot line	-----
Deed lot number	(15)
Parcel or index number	(99)
Improvement	o
Railroad	+++++

REVISIONS

1.	4/23/06 H&S
2.	5/17/2011 RTI
3.	11/20/10 S&H
4.	1/10/2014 PJHH
5.	6/5/2015 PJHH
6.	
7.	
8.	
9.	
10.	

RESTRICTION

All finished tax maps created under the provisions of legislation are the property of the Ritchie County Assessor and the reproduction, copying, distribution, sale, or lease of such tax maps or copies thereof without the written permission of the Ritchie County Assessor is prohibited by law.



Ritchie County
 Office of Assessor
HARRISVILLE, W.Va.

GRANT DISTRICT
 District : 05 Map No : 3

Date, Aerial Photography : APRIL, 1962 Date, Map : NOV., 1963
 Photo No : 59 Scale : 1"=400'