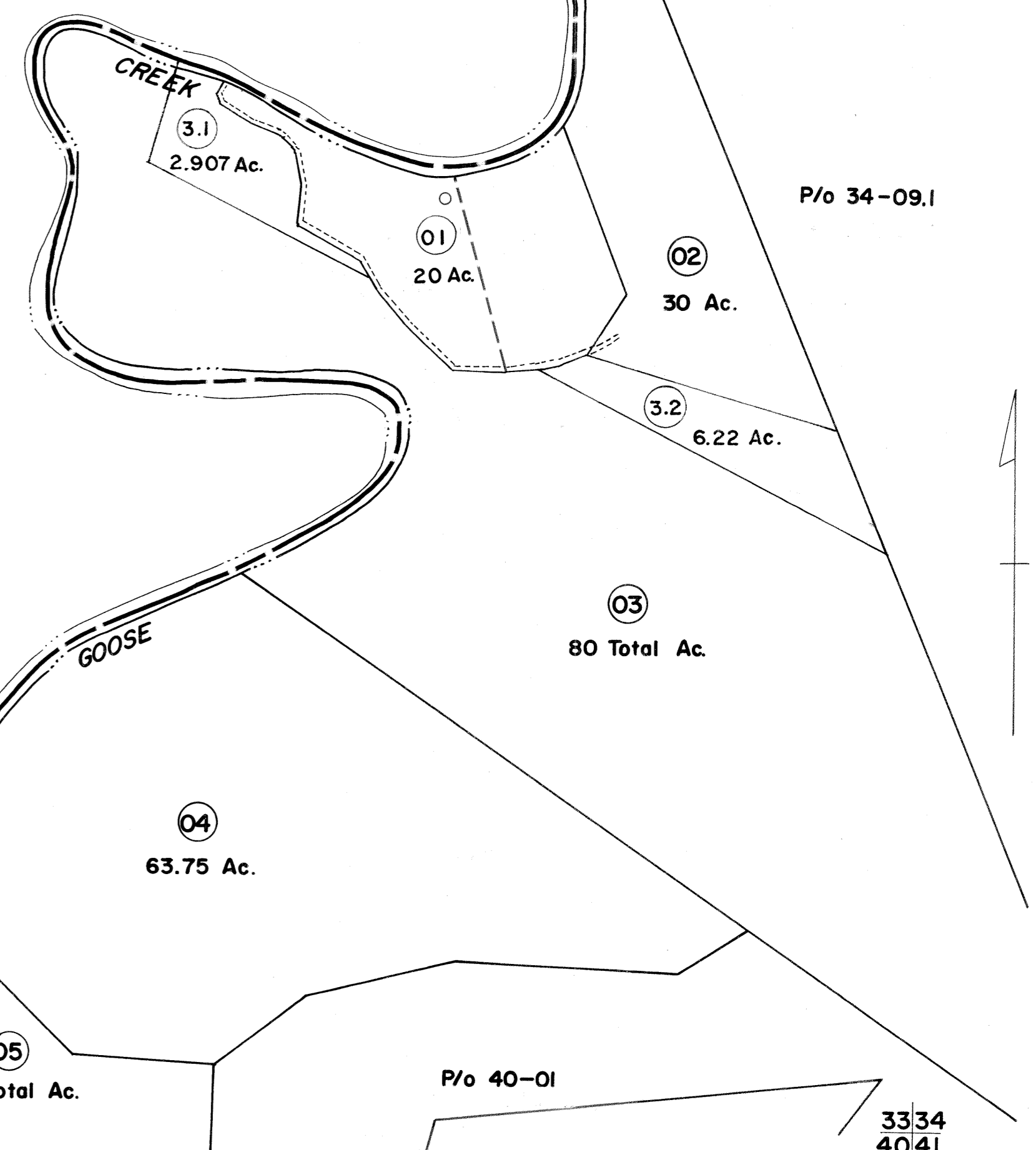
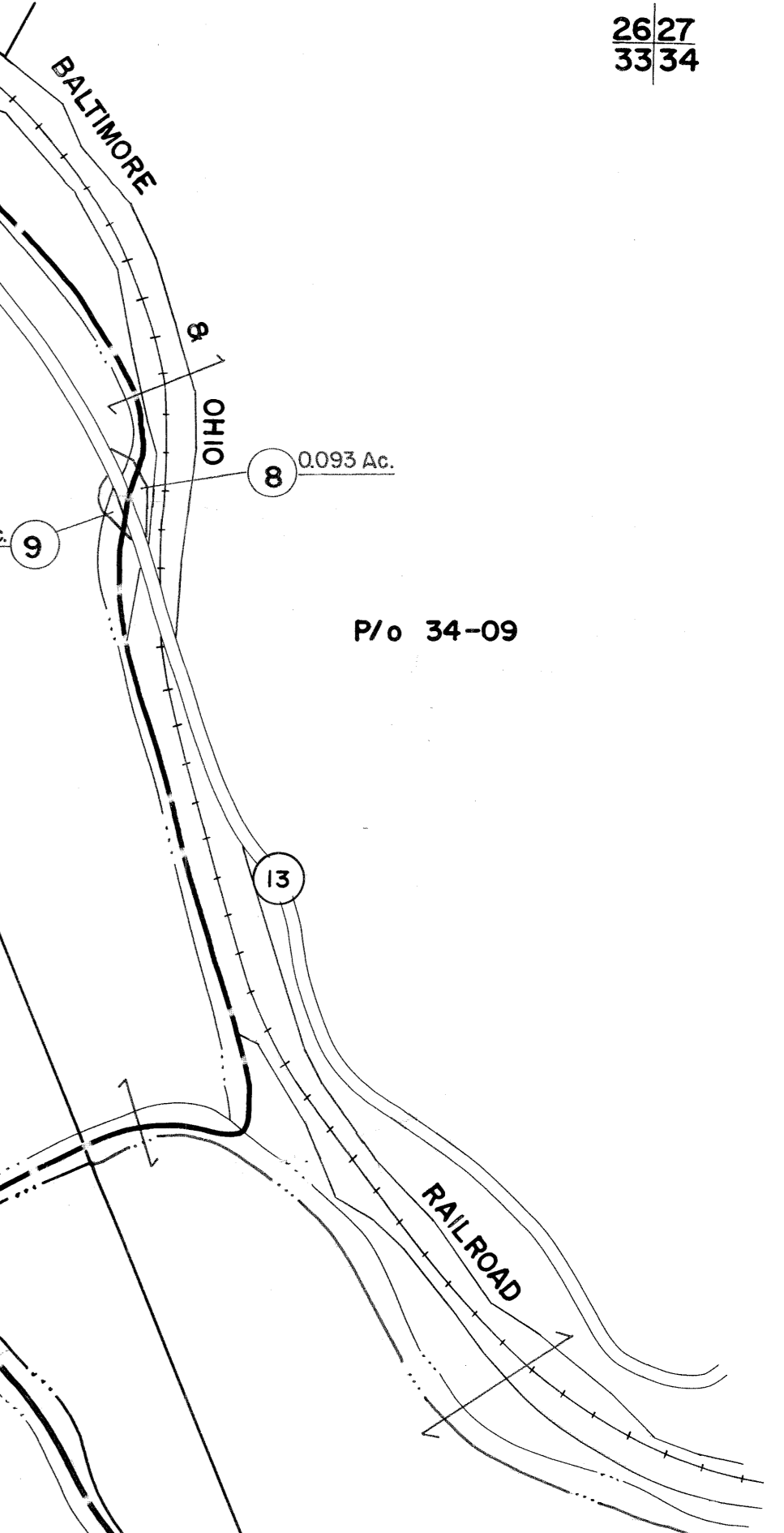


WOOD COUNTY

WIRT COUNTY



FOR TAX PURPOSES ONLY

Prepared by
L. ROBERT KIMBALL
Consulting Engineer
Ebensburg, Pennsylvania

Legend

Property line	-----	Original lot line	-----
Edge of pavement or roadway	-----	Deed lot number in parenthesis	(15)
Corporation line	-----	Parcel or index number in circle	(99)
District line	-----	Improvement	o
County line	-----	Railroad	+++++

Revisions

1	REVISED 6/5/64	7	
2	REV. TO 7-1-83	10	NCS
3	7-1-84	11	L. E. Stepp
4	Revised to 7-1-89	12	
5	ESI 2/26/02	13	REK
6	11/21/10	14	S&H
7		15	
8		16	

STATE OF WEST VIRGINIA
RITCHIE COUNTY
Office of Assessor

GRANT DISTRICT
SHEET 33

Date, Aerial Photography: APRIL, 1963 Date, Map: NOV, 1963
Photo No: 03 Scale: 1"= 400'