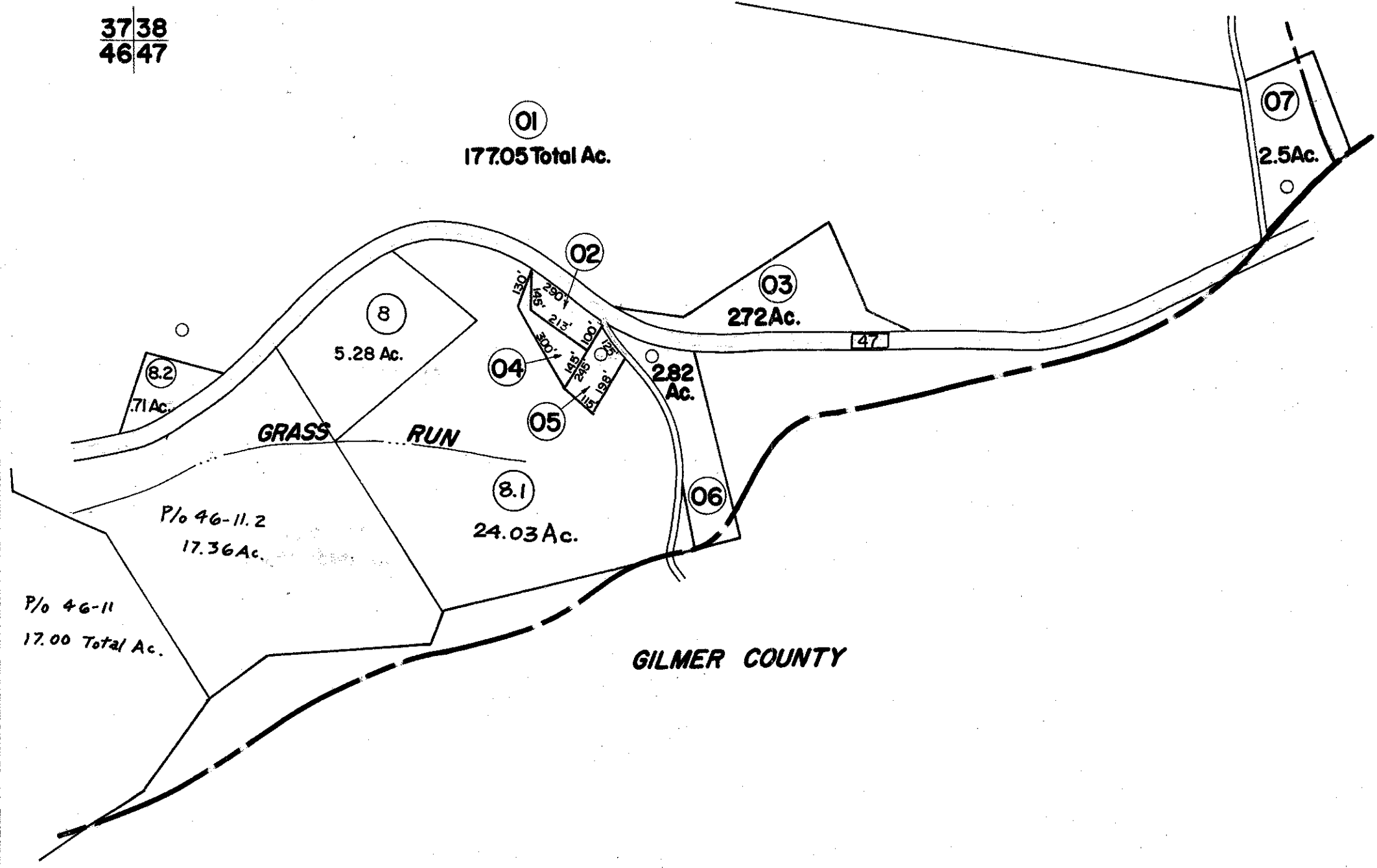


3738
4647

38
47



4647
51

FOR TAX PURPOSES ONLY

Prepared by
L. ROBERT KIMBALL
Consulting Engineer
Ebensburg, Pennsylvania

Legend

Property line	-----	Original lot line
Edge of pavement or roadway	-----	Dead lot number in parenthesis	(5)
Corporation line	-----	Parcel or index number in circle	⊙
District line	-----	Improvement	—
County line	-----	Railroad	—+—

Revisions

No.	Description	Date	By
1	REVISED	8/11/64	
2	5-15-72	JHP	
3	1-10-76	DS	
4	Revised to 7-1-85	DF	
5	July, 1985	TR	
6			
7			
8			

STATE OF WEST VIRGINIA
RITCHIE COUNTY

Office of Assessor

MURPHY DISTRICT
SHEET 47

Date, Aerial Photography: APRIL, 1962 Date, Map: APRIL, 1964
Photo No: 170 Scale: 1" = 400'

156 MATERIAL, A. AB. SMITH CO., P.O. PA. 15244-1262