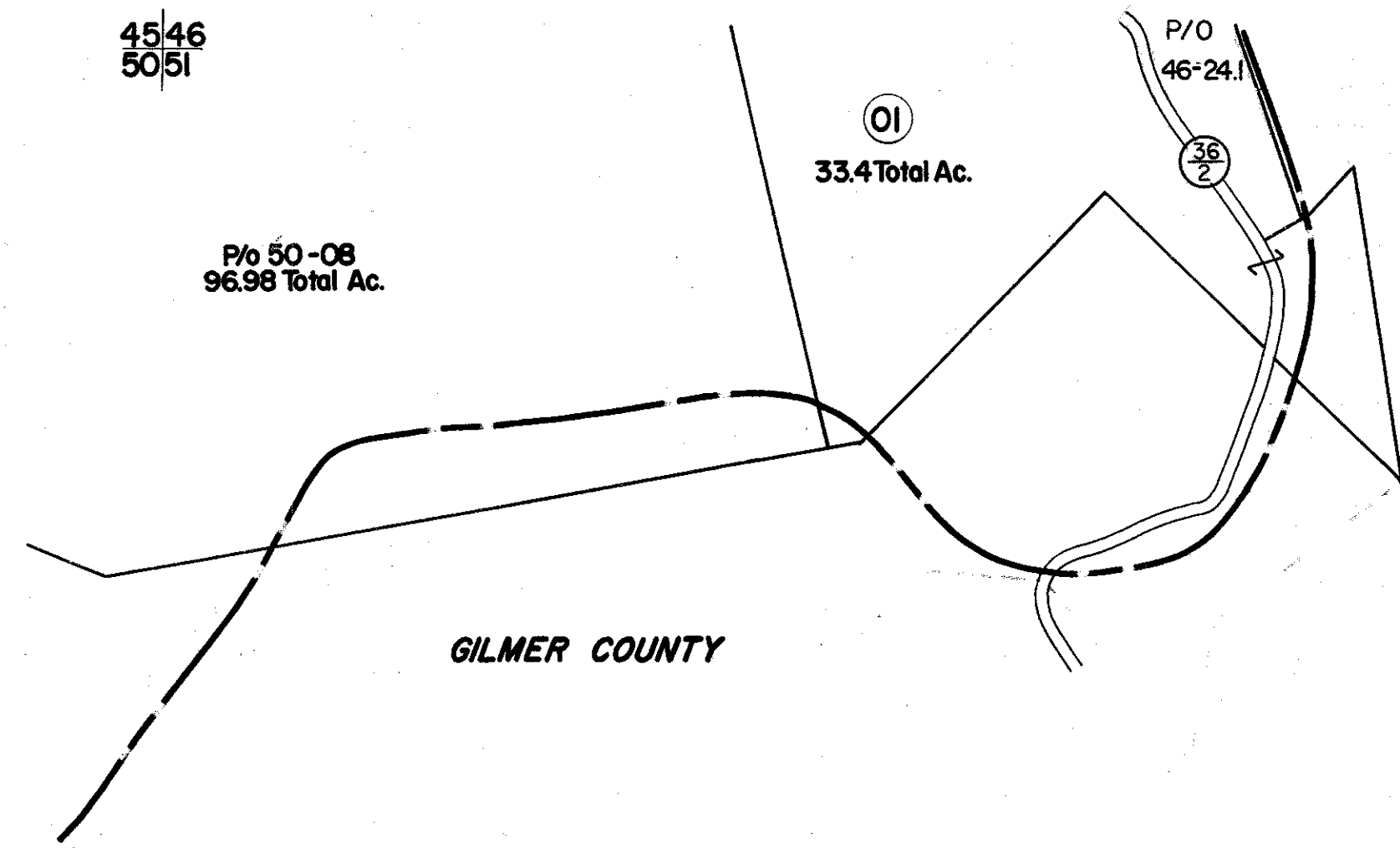


4546  
5051

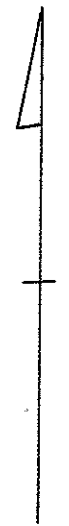
4647  
51



GILMER COUNTY

5051

51



FOR TAX PURPOSES ONLY

Prepared by  
**L. ROBERT KIMBALL**  
 Consulting Engineer  
 Ebensburg, Pennsylvania

Legend

Property line	-----	Original lot line	-----
Edge of pavement or roadway	-----	Dead lot number in parenthesis	(5)
Corporation line	-----	Parcel or index number in circle	⊙
District line	-----	Improvement	○
County line	-----	Railroad	—+—+—+—

Revisions

1	Revised to 7-1-63	2	17
2		3	18
3		4	19
4		5	20
5		6	21
6		7	22
7		8	23
8		9	24

STATE OF WEST VIRGINIA  
 RITCHIE COUNTY  
 Office of Assessor

MURPHY DISTRICT  
 SHEET 51

Date, Aerial Photography: APRIL, 1962 Date, Map: APRIL, 1964  
 Photo No: 149 Scale: 1" = 400'