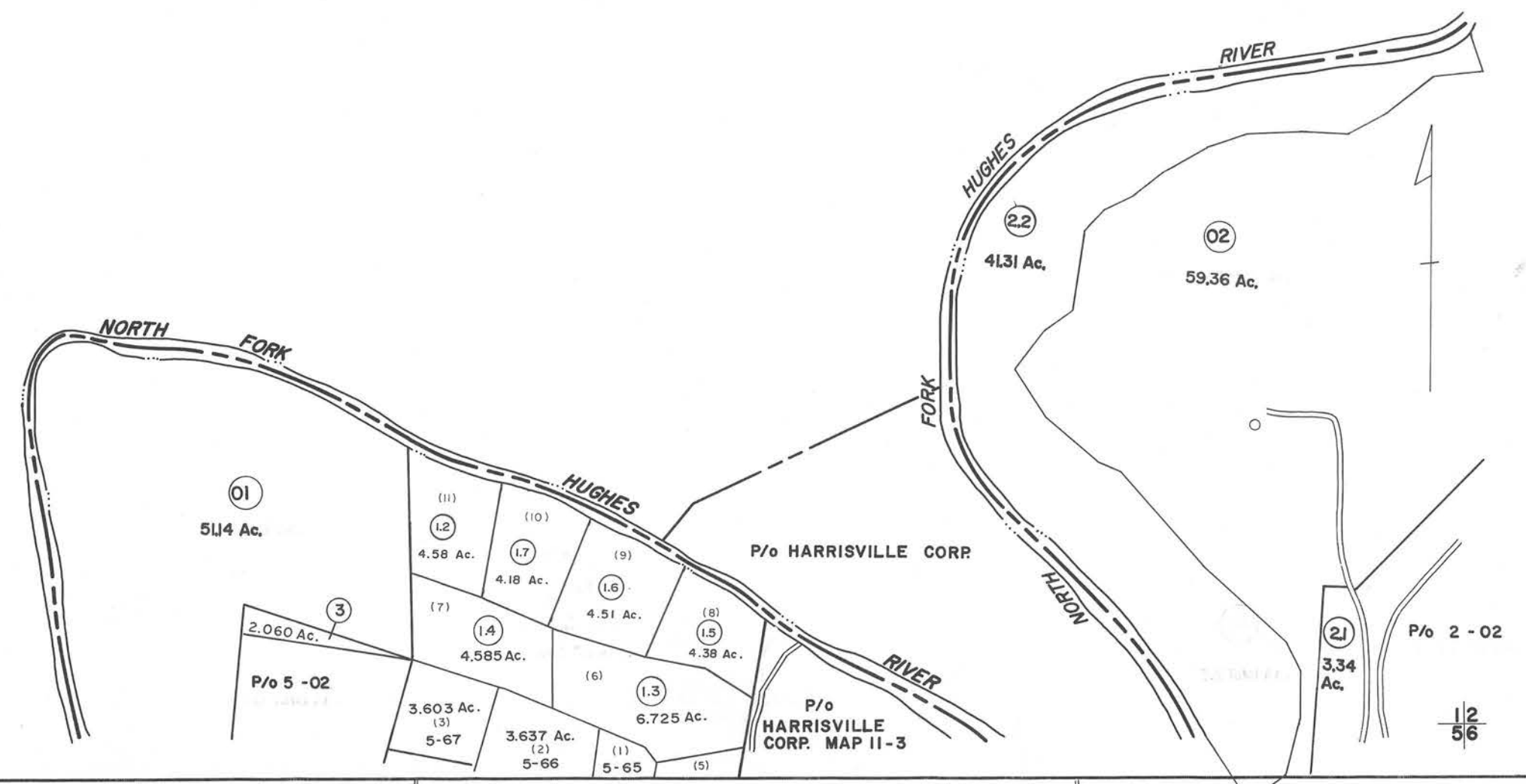




CLAY DISTRICT



1/5

1/2 5/6

FOR TAX PURPOSES ONLY

Prepared by
L. ROBERT KIMBALL
Consulting Engineer
Ebensburg, Pennsylvania

Legend	
Property line	Original lot line
Edge of pavement or roadway	Deed lot number in parenthesis (15)
Corporation line	Parcel or index number in circle (P)
District line	Improvement
County line	Railroad

Revisions			
No.	Description	Date	By
1	REVISED 8/13/64	3/10/2012	SBH
2	11/17/70		J.C.
3	Revised to 7-1-83		DSW
4	REV. TO 7-1-86		NCS
5	Revised to 7-1-89		DSH
6	OGIS 11/27/93		DSH
7	O.G.I.S. 1-23-96		J.E.B
8	SLS INC. 1/15/98		DSW

STATE OF WEST VIRGINIA
RITCHIE COUNTY
Office of Assessor

UNION DISTRICT
SHEET 01

Date, Aerial Photography: APRIL, 1962 Date, Map: DEC, 1963
Photo No: 117 Scale: 1"=400'