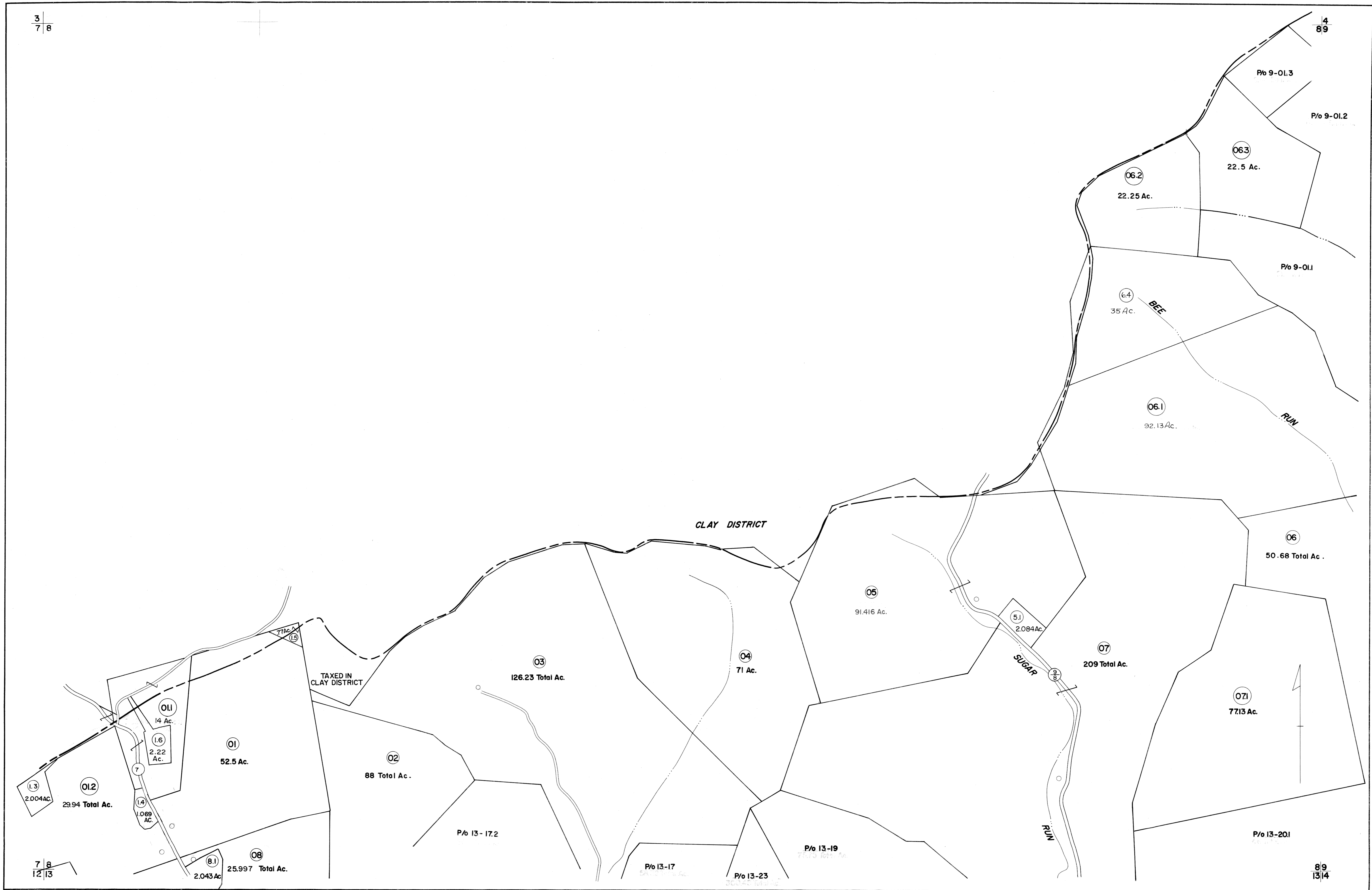


3
7 8

7 8
12 13

4
8 9

8 9
13 14



FOR TAX PURPOSES ONLY

Prepared by
L. ROBERT KIMBALL
Consulting Engineer
Ebensburg, Pennsylvania

Legend

Property line	Original lot line	Deed lot number in parenthesis (15)
Edge of pavement or roadway	Parcel or index number in circle (9)	Improvement
Corporation line	County line	Railroad

Revisions

No.	Date	Description	By
1	4-22-77	D.H.	
2	Revised to 7-1-83		
3	July 1985		
4	Revised to 7-1-87		
5	OGIS 11/27/93	DSH	
6	4/27/2003	S & H	
7			
8			

STATE OF WEST VIRGINIA
RITCHIE COUNTY
Office of Assessor

UNION DISTRICT
SHEET 08

Date, Aerial Photography: APRIL, 1962 Date, Map: DEC, 1963
Photo No: 162 Scale: 1" = 400'