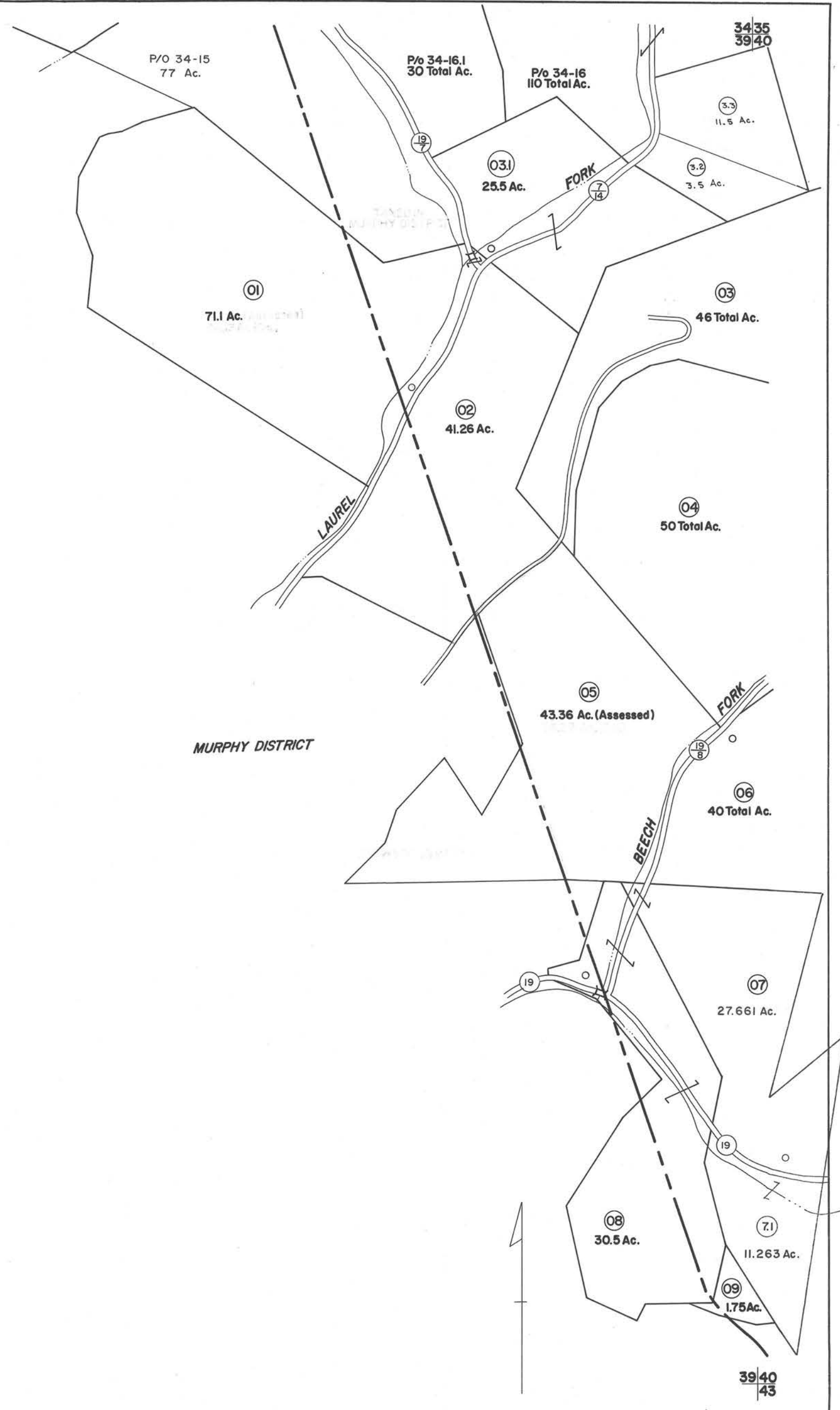


34  
39



39

FOR TAX PURPOSES ONLY

Prepared by  
**L. ROBERT KIMBALL**  
Consulting Engineer  
Ebensburg, Pennsylvania

Legend

Property line	-----	Original lot line	.....
Edge of pavement or roadway	-----	Deed lot number in parenthesis	(15)
Corporation line	-----	Parcel or index number in circle	⓪
District line	-----	Improvement	○
County line	-----	Railroad	+++++

Revisions

1	REVISED 8/13/64	9		17	
2	11/9/76	10	JC	18	
3	Revised to 7-1-83	11		19	
4	OGIS 11/28/93	12	DSH	20	
5	3/11/12	13	STH	21	
6		14		22	
7		15		23	
8		16		24	

STATE OF WEST VIRGINIA  
RITCHIE COUNTY  
Office of Assessor

UNION DISTRICT  
SHEET 39

Date, Aerial Photography: APRIL, 1962  
Photo No: 145-147

Date, Map: DEC., 1963  
Scale: 1"=400'