

FOR TAX PURPOSES ONLY

Legend

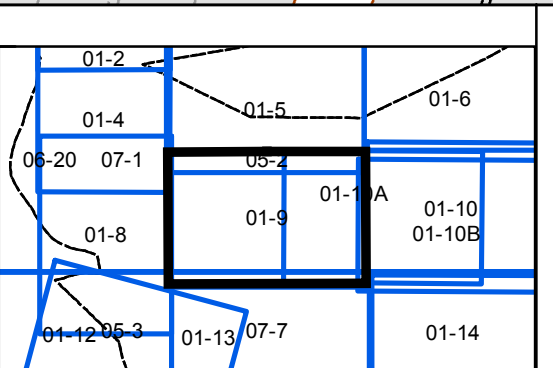
	District Boundary
	Previous Deed
	Property
	Road Easement
	Railroad Right of Way
	Road Right of Way
	River
	Deed lot Number (15)
	Parcel or Index Number (9)
	Unknown
	Improvement
	Cemetery
	Church
	Educational

Restriction

REPRODUCTION OF TAX MAPS PROHIBITED - It is unlawful to copy, photocopy, scan, photograph, or otherwise reproduce this tax map. Pursuant to the provisions of W. Va. CSR § 189-5-5 (2013) no person may reproduce, copy, distribute or sell copies of tax maps prepared by the counties without having first obtained the written permission of the Taylor County Assessor. In addition to other penalties and civil remedies, any person who, without the written permission of the Taylor County Assessor, reproduces, copies, distributes, or sells or who allows the reproduction, copying, distribution or sale of tax maps prepared by the Taylor County Assessor, shall be refused permission by the Taylor County Assessor or Assessor's agent to purchase tax maps in the future.

Revisions

1	Revised 12/30/2016	10	19
2	Revised 01/23/2019	11	20
3		12	21
4		13	22
5		14	23
6		15	24
7		16	25
8		17	26
9		18	27
			28
			29
			30
			31
			32
			33
			34
			35
			36



Taylor County
 Assessor's Office
 Christa Kinsey, Assessor
 Grafton, WV

GRAFTON CORP
 District: 01 Map No: 9
 Date of Publication: 1/23/2019
 Scale: 1" = 200'