

FOR TAX PURPOSES ONLY

Legend

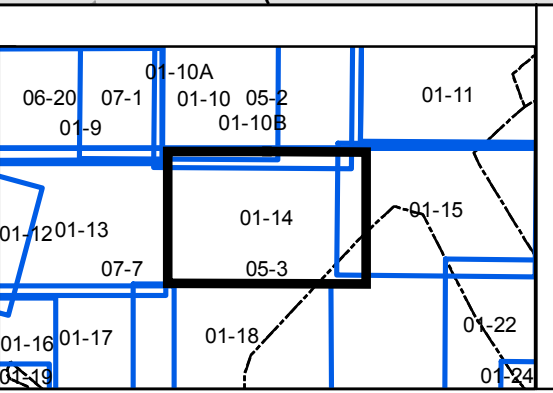
	District Boundary		Deed Lot Number	(15)
	Previous Deed		Parcel or Index Number	(9)
	Property		Improvement	(1)
	Road Easement		Cemetery	(1)
	Railroad Right of Way		Church	(1)
	Road Right of Way		Educational	(1)
	River			

Restriction

REPRODUCTION OF TAX MAPS PROHIBITED - It is unlawful to copy, photograph, scan, photograph, or otherwise reproduce this tax map. Pursuant to the provisions of W.Va. CSR § 189-5-5 (2013) no person may reproduce, copy, distribute or sell copies of tax maps prepared by the counties without having first obtained the written permission of the Taylor County Assessor. In addition to other penalties and civil remedies, any person who, without the written permission of the Taylor County Assessor, reproduces, copies, distributes, or sells or who allows the reproduction, copying, distribution or sale of tax maps prepared by the Taylor County Assessor, shall be refused permission by the Taylor County Assessor or Assessor's agent to purchase tax maps in the future.

Revisions

1	Revised 12/30/2016	10	28
2	Revised 01/23/2019	11	29
3		12	30
4		13	31
5		14	32
6		15	33
7		16	34
8		17	35
9		18	36



Taylor County
 Assessor's Office
 Christa Kinsey, Assessor
 Grafton, WV

GRAFTON CORP
 District: 01 Map No: 14
 Date of Publication: 1/23/2019
 Scale: 1" = 200'