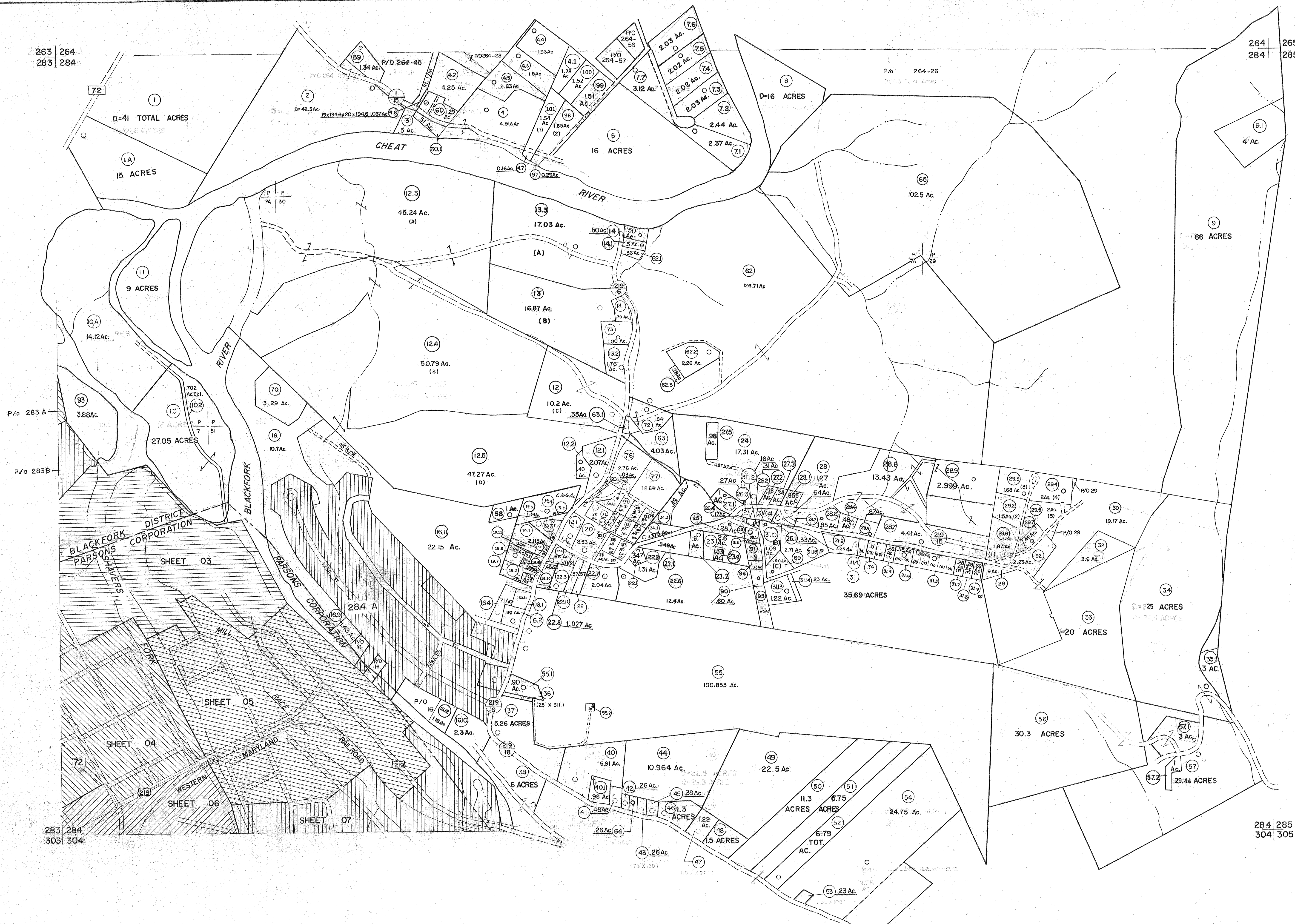


263 | 264
283 | 284

264 | 265
284 | 285



P/O 283 A
P/O 283 B

283 | 284
303 | 304

284 | 285
304 | 305

For Tax Purposes Only

Prepared by
MICHAEL BAKER, JR., INC.
Consulting Engineers
Rochester, Pennsylvania

Legend	
Property line	Original lot line
Edge of pavement or roadway	Deed lot number
Corporation line	Parcel or index number
District line	Improvement
County line	Railroad

Revisions	
1 10-3-63	9 Revised to 7-1-87
2 6-3-64	10 REV. TO 3-1-89 R.E.B.
3 6-4-75	11 OGIS 1/1/91 DSH
4 11-20-78	12 OGIS 3-19-92 TL
5 Revised to 7-1-82	13 OGIS 1/27/93 DSH
6 7-1-84 L.E.S.	14 OGIS 12/13/93 SAJ
7 Revised to July 1985	15 OGIS 2-95 HD
8 July, 1986 TRL	16 O.G.I.S 4-1-96 J.E.B.
	17 SLS INC. - DDC 5/97
	18 SLS INC. 2/25/98 JWM
	19 SLS INC. 1/27/99 DSW
	20 SLS INC. 3/2/00 JWM
	21 ESI 1/31/01 REK
	22 ESI 2/8/02 REK
	23 ESI 2/20/03 REK
	24 HBS 2/19/04

6-22-08 tt45
6-21-09 tt45
5-25-10 KEY MAP 44-5 S&H
3/21/05 S&H
3/24/07 S&H
6/31/11 S&H
5-4-13 H-45

7/28/15 SBH
6-7-2018 ALM

TUCKER COUNTY
STATE OF WEST VIRGINIA
Office of Assessor

DISTRICT
BLACKFORK

SHEET NO: 284

Date, Aerial Photography: November, 1961 Date, Map: Dec., 1962
Photo No: Scale: 1" = 400'