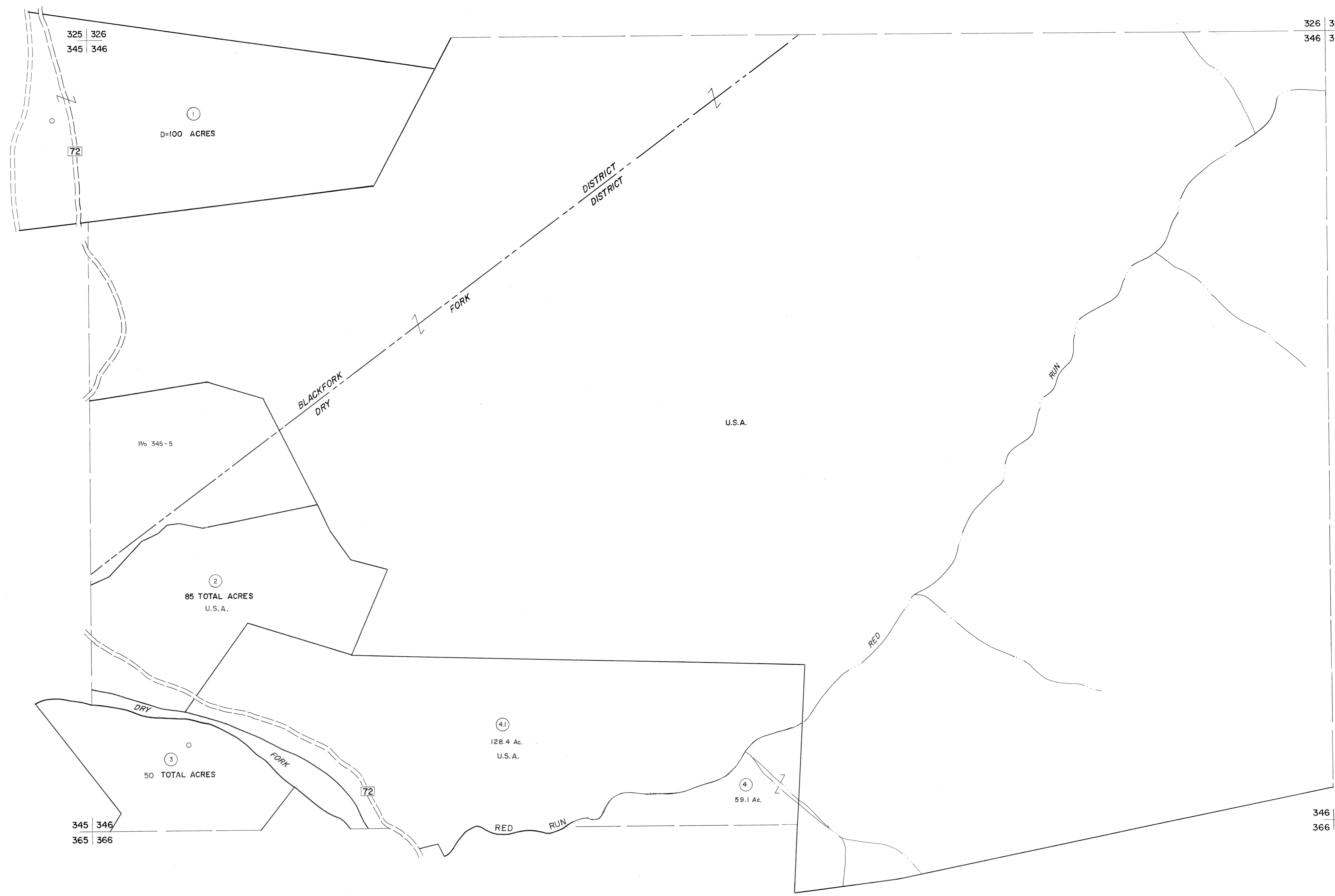


325 | 326  
345 | 346

326 | 327  
346 | 347



345 | 346  
365 | 366

346 | 347  
366 | 367

For Tax Purposes Only

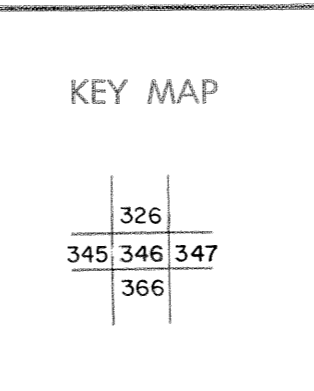
Prepared by  
MICHAEL BAKER, JR., INC.  
Consulting Engineers  
Rochester, Pennsylvania

**Legend**

Property line	—	Original lot line	- - - - -
Edge of pavement or roadway	— · — · —	Deed lot number	(15)
Corporation line	- - - - -	Parcel or index number	(99)
District line	- · - · -	Improvement	— · — · —
County line	- - - - -	Railroad	— + — + —

**Revisions**

1	Revised to 7-1-83	9	17
2	OGIS 1/5/91 DSH	10	18
3	OGIS 1/31/93 DSH	11	19
4	ESI 2/12/02 REK	12	20
5		13	21
6		14	22
7		15	23
8		16	24



**TUCKER COUNTY**  
STATE OF WEST VIRGINIA  
Office of Assessor

DISTRICT **BLACKFORK DRY FORK**

**SHEET NO: 346**

Date, Aerial Photography: November, 1961 Date, Map: Dec. 1962  
Photo No: Scale: 1" = 400'