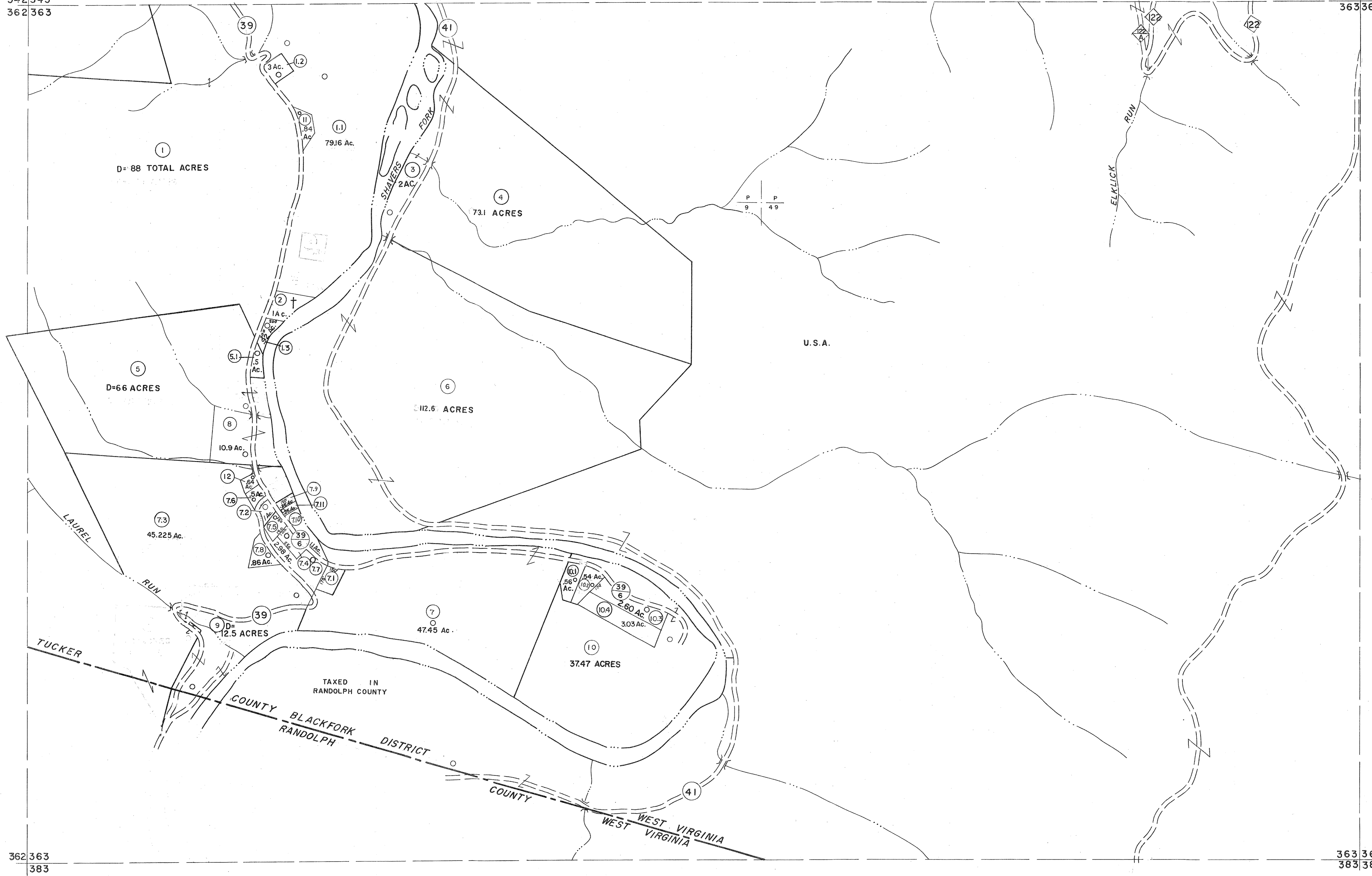


342343
362363

343344
363364



For Tax Purposes Only

Prepared by
MICHAEL BAKER, JR., INC.
Consulting Engineers
Rochester, Pennsylvania

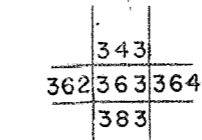
Legend

Property line	—	Original lot line	- - - - -
Edge of pavement or roadway	—	Deed lot number	(15)
Corporation line	—	Parcel or index number	(22)
District line	—	Improvement	o
County line	—	Railroad	—

Revisions

1	6-3-75	J.C.	9	OGIS	12/12/93	SAJ	17
2	11/22/78	D.G.	10	SLS INC.	- DDC 5/97	REK	18
3	Revised to 7-1-88	D.S.	11	ESI	2/2/01	REK	19
4	7-1-84	L.E.S.	12	3/28/06		S.B.H.	20
5	Revised to 7-1-87		13	6-21-09		4.5	21
6	Rev. to 3-1-89	R.E.B.	14	5-4-13		4.5	22
7	OGIS	1/6/91	DSH	3/1/2019	Andrew Meador		23
8	OGIS	3-19-92	TL				24

KEY MAP



TUCKER COUNTY
STATE OF WEST VIRGINIA
Office of Assessor

DISTRICT

BLACKFORK

SHEET NO: 363

Date, Aerial Photography: November, 1961 Date, Map: Dec., 1962
Photo No: Scale: 1"=400'