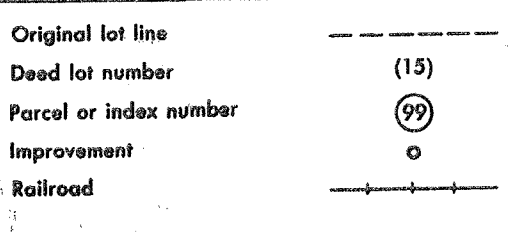
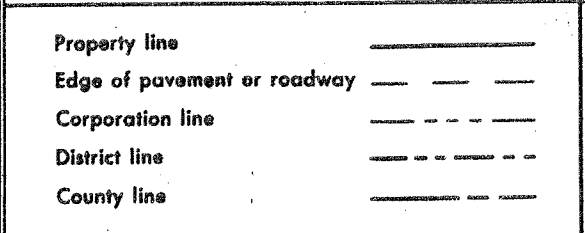


For Tax Purposes Only
 Prepared by
 ASSESSMENT EQUALIZATION DIV.
 STATE TAX COMMISSIONER
 CHARLESTON, W. VA.



Revisions			
1	NEW LINEN ras	9	OGIS 1/27/93 DSH
2	6-4-7E T.G.	10	OGIS 12/12/93 SAJ
3	11-78 BAH	11	OGIS 4-95 HD
4	Revised to 7-1-88 DF	12	SLS INC. - DDC 5/97
5	7-1-84 L.F.S.	13	SLS INC. 2/25/98 JWM
6	July, 1986 TRL	14	SLS INC. 1/27/99 DSW
7	REV TO 3-1-89	15	SLS INC. 3/2/00 JWM
8	OGIS 3-19-92 TL	16	ESI 1/31/01 REK
17	ESI 2/8/02 REK	18	H&S 2/19/04
19	3/24/07 S&H	20	6-22-08 H&S
21	6-21-09 TT&S	22	6/24/11 S&H
23	5-4-13 H&S	24	5/29/15 S&H

1/30/2019 Andrew Meador
 KEY MAP

TUCKER COUNTY
 STATE OF WEST VIRGINIA
 Office of Assessor

DISTRICT **BLACKFORK**
SHEET NO: 284 A
 Date, Aerial Photography: Photo No:
 Date, Map: 3-16-67
 Scale: 1" = 100'