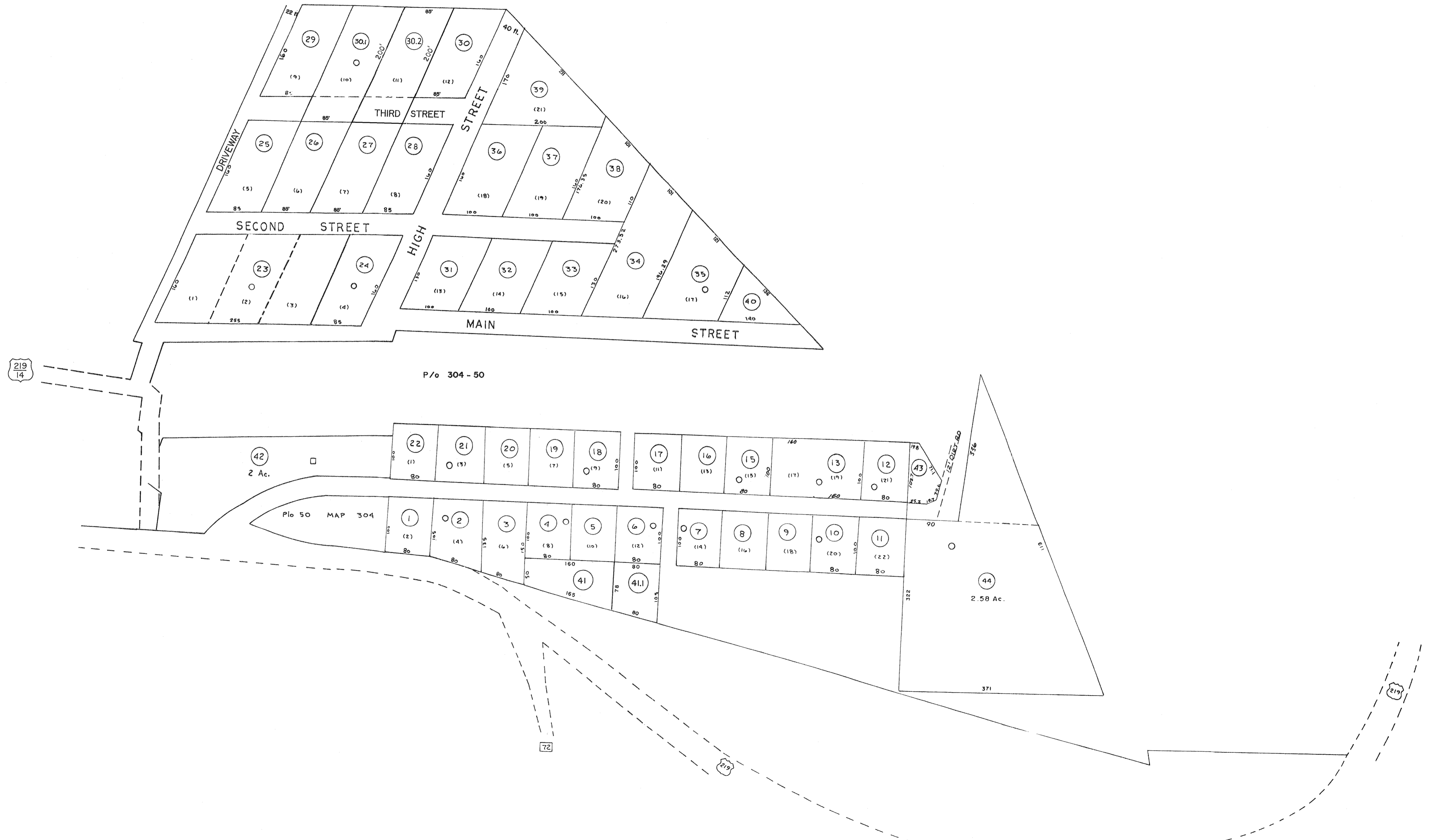


PURNELL SUB-DIV.



For Tax Purposes Only
 Prepared by
 LOCAL GOVERNMENT RELATIONS DIV.
 STATE TAX COMMISSIONER
 CHARLESTON, W.VA.

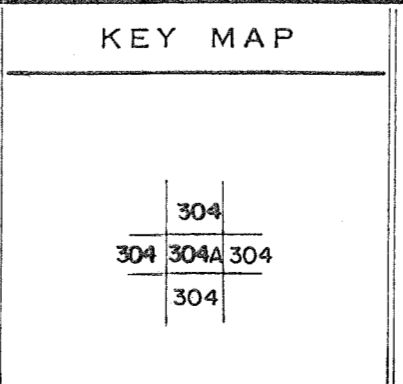
LEGEND	
Property line	—
Edge of pavement or roadway	- - - - -
Corporation line	- · - · -
District line	- - - - -
County line	- - - - -
Original lot line	- - - - - (15)
Deed lot number	⊙
Parcel or index number	⊙
Improvement	○
Railroad	—+—+—

REVISIONS	
1	6-4-75 J.C.
2	11-28-78 D.S.
3	Revised to 7-1-83 T.P.
4	O.G.I.S. 3-19-92 T.L.
5	O.G.I.S. 4-1-96 J.E.B.
6	SLS INC. - DDC 5/97
7	SLS INC. 3/3/98 J.W.M.
8	SLS INC. 1/28/99 D.S.W.
9	ESI 2/1/01 REK
	ESI 2/20/03 REK
	6-21-09 ++45
	5-4-12 +-45

RESTRICTION

All tax maps created under the provisions of reappraisal legislation are the property of the State of West Virginia and the reproduction, copying, distribution or sale of such tax maps or any copies thereof without the written permission of the State Tax Commissioner is prohibited by law.

1-31-2019 Andrew Meador



TUCKER COUNTY
 STATE OF WEST VIRGINIA
 OFFICE OF ASSESSOR

BLACKFORK
 304-A

Date, Aerial Photography: _____ Date, Map: _____
 Photo No: _____ Scale: 1" = 100'