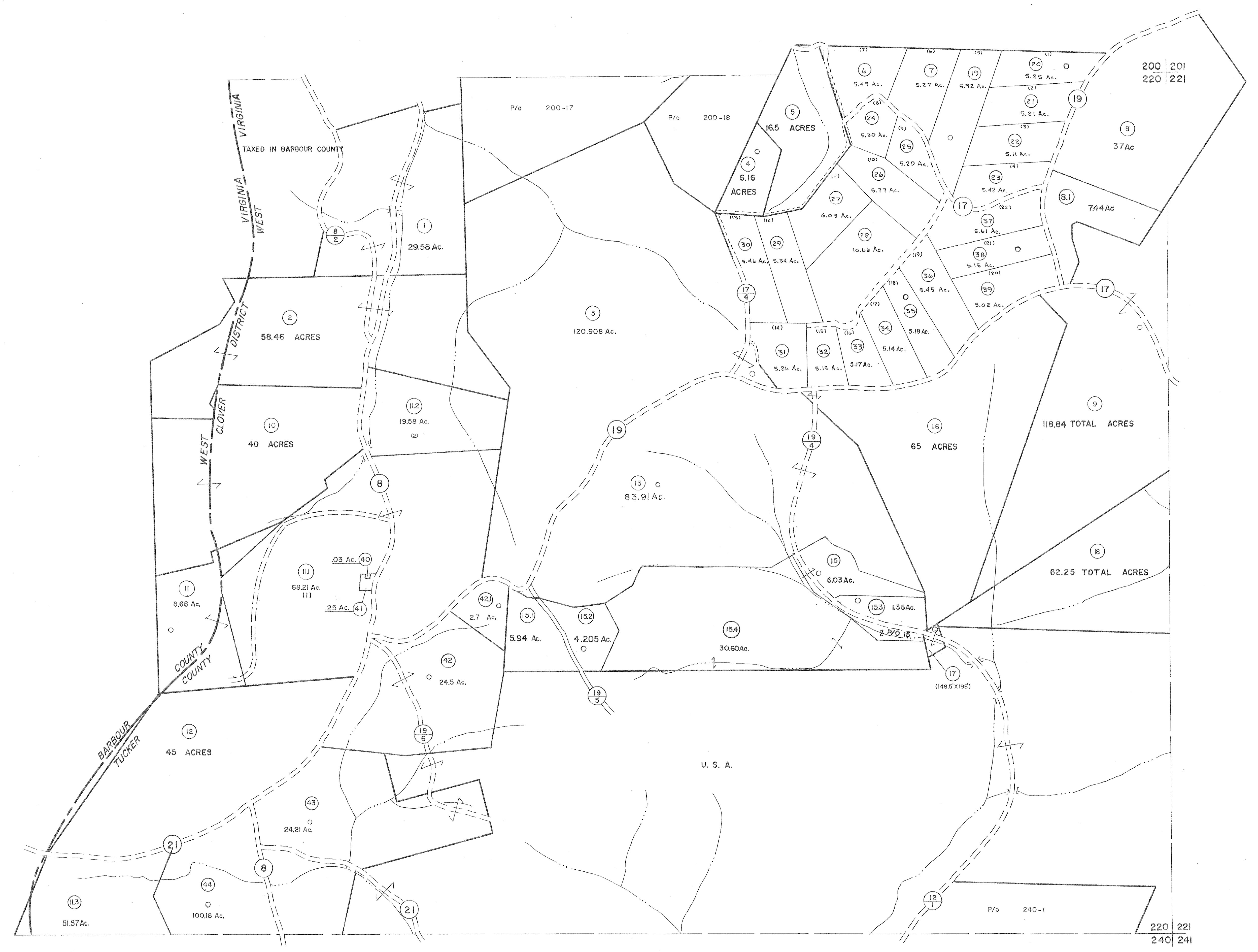


200  
220

220  
240



For Tax Purposes Only  
Prepared by  
MICHAEL BAKER, JR., INC.  
Consulting Engineers  
Rochester, Pennsylvania

Legend	
Property line	—
Edge of pavement or roadway	—
Corporation line	—
District line	—
County line	—
Original lot line	- - - -
Deed lot number	(15)
Parcel or index number	(2)
Improvement	o
Railroad	+

Revisions	
1 6-3-75 JC	9 OGIS 4-95 HD
2 6-16-83 JCB	10 SLS INC. - DDC 5/97
3 6-16-83 JCB	11 SLS INC. 2/23/98 JWM
4 REV. TO 7-1-86 NCS	12 SLS INC. 1/27/99 DSW
5 Rev. to 3-1-89 R.E.B.	13 ESI 1/31/01 REK
6 OGIS 3-19-92 T.L.	14 HBS 2/22/04
7 OGIS 1/25/93 DSH	15 6-22-08
8 OGIS 12/11/93 SAJ	16 6-21-09

KEY MAP  
200  
220 221  
240

TUCKER COUNTY  
STATE OF WEST VIRGINIA  
Office of Assessor

DISTRICT CLOVER  
SHEET NO: 220  
Date, Aerial Photography: November, 1961 Date, Map: Dec., 1962  
Photo No. Scale: 1" = 400'