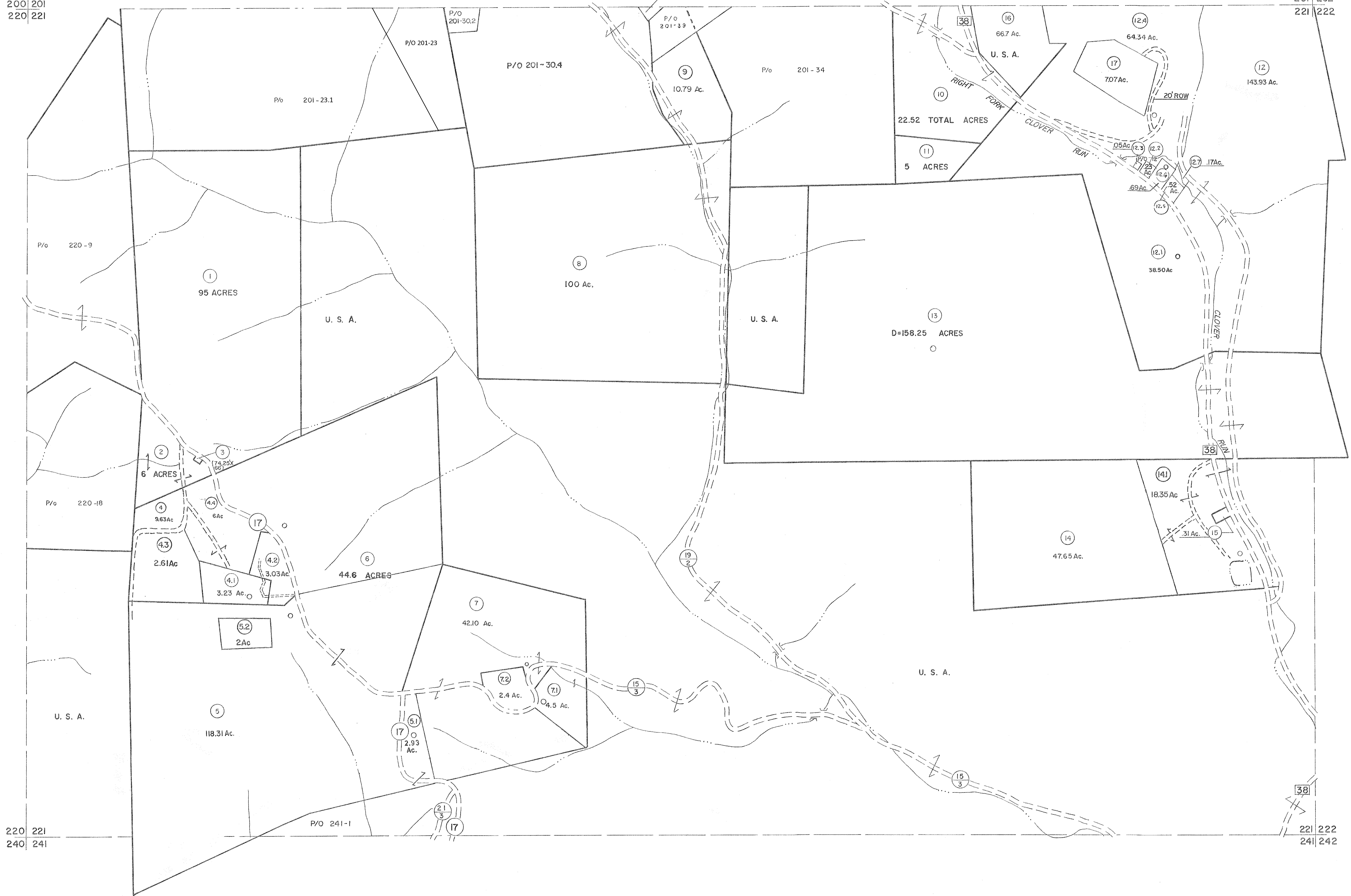


200 201
220 221

201 202
221 222



220 221
240 241

221 222
241 242

For Tax Purposes Only

Prepared by
MICHAEL BAKER, JR., INC.
Consulting Engineers
Rochester, Pennsylvania

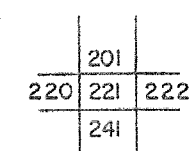
Legend

Property line	---	Original lot line	---
Edge of pavement or roadway	---	Deed lot number	(15)
Corporation line	---	Parcel or index number	(17)
District line	---	Improvement	○
County line	---	Railroad	—+—

Revisions

1	6-3-75	J.C.	9	OGIS	3-19-92	TL	17	6/23/11	S&H
2	11-20-78	D.G.	10	OGIS	1/25/93	DSH	18	5-4-13	H&S
3	11-20-78	TL	11	OGIS	12/11/93	SAJ	19	5/26/15	S&H
4	7-21-84	L.E.S.	12	SLS INC.	2/23/98	JWM	20	7-19-17	SLS
5	Revised to 7-1-85	TL	13	HBS	2/22/04		21	6-7-2018	Andrew Meador
6	Revised to 7-1-85	TL	14		6-22-08		22		
7	REV. TO 3-1-89	R.E.B.	15		6-21-09		23		
8	OGIS	12/31/90	DSH	16	5-8-10		24		

KEY MAP



TUCKER COUNTY
STATE OF WEST VIRGINIA
Office of Assessor

DISTRICT

CLOVER

SHEET NO: 221

Date, Aerial Photography: November, 1961 Date, Map: Dec., 1962
Photo No: Scale: 1" = 400'