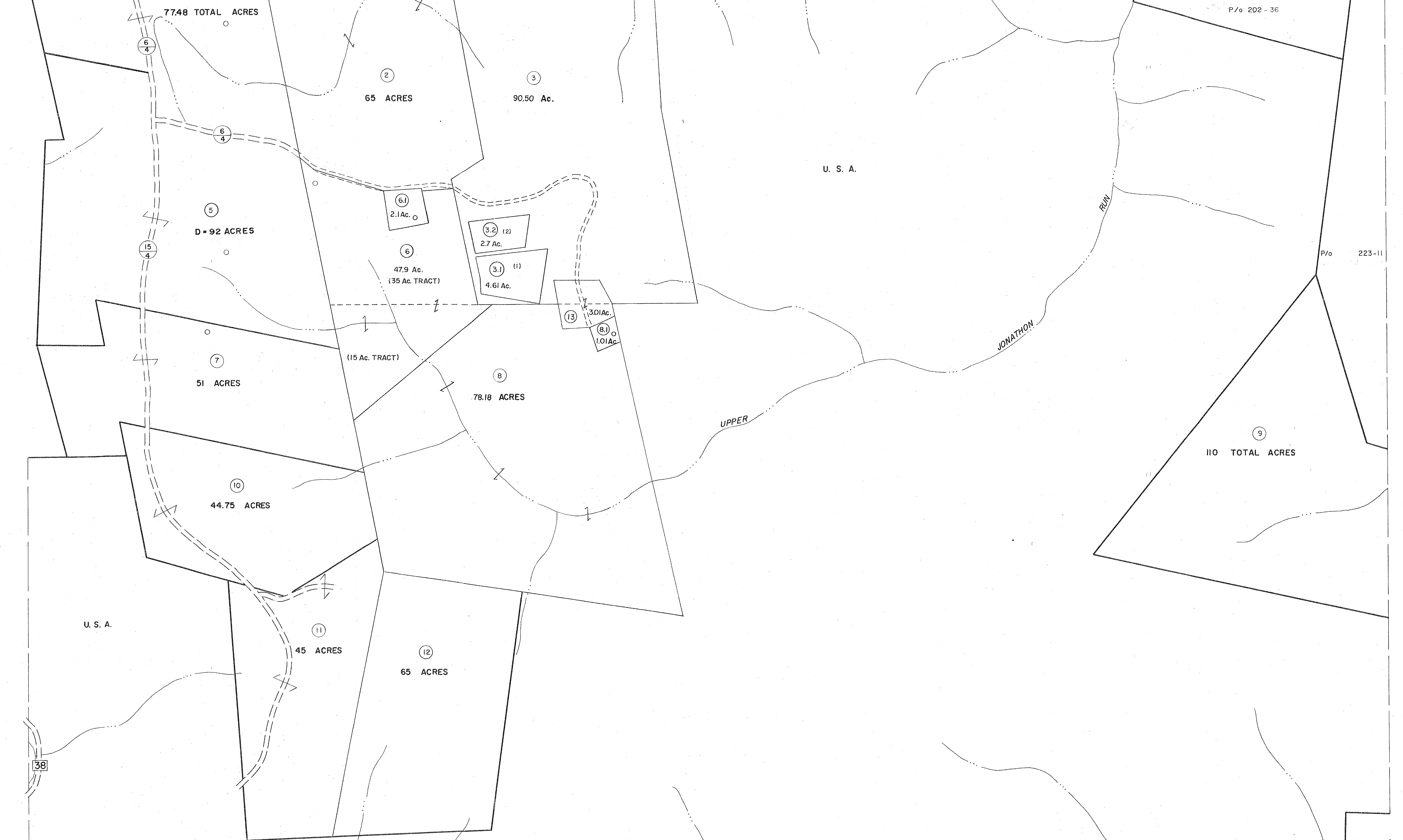


201 202
221 222

202 203
222 223

221 222
241 242

222 223
242 243

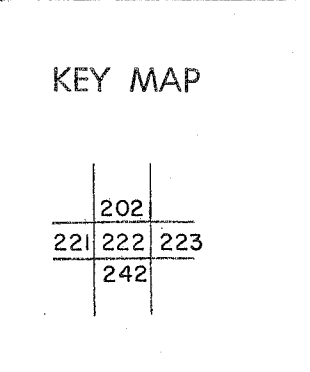


For Tax Purposes Only

Prepared by
MICHAEL BAKER, JR., INC.
 Consulting Engineers
 Rochester, Pennsylvania

Legend	
Property line	—————
Edge of pavement or roadway	—————
Corporation line	—————
District line	—————
County line	—————
Original lot line	-----
Dead lot number	(15)
Parcel or index number	(59)
Improvement	o
Railroad	—+—+—+—

Revisions	
1	July 1993
2	7-1-84 L.E.S.
3	REV. TO 3-1-89 R.E.B.
4	OGIS 1/25/93 DSH
5	OGIS 12/11/93 SAJ
6	OGIS 2-95 HD
7	SLS INC. - DDC 5/97
8	6/3/11 S&H



TUCKER COUNTY
 STATE OF WEST VIRGINIA
 Office of Assessor

DISTRICT **CLOVER**

SHEET NO: 222

Date, Aerial Photography: November, 1961 Date, Map: Dec. 1962
 Photo No: Scale: 1" = 400'