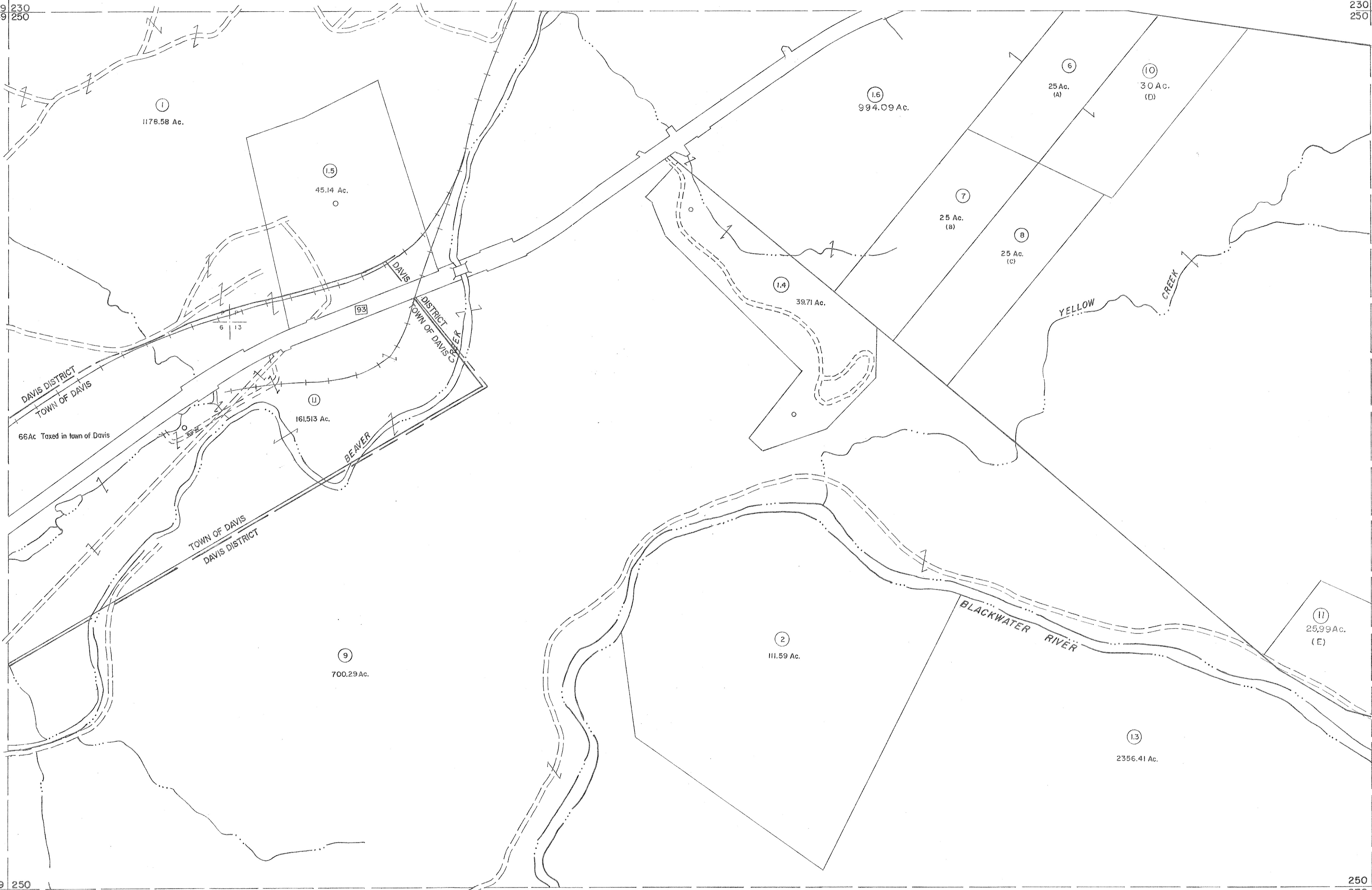


229 230
249 250

230 231
250 251

249 250
269 270

250 251
270 271



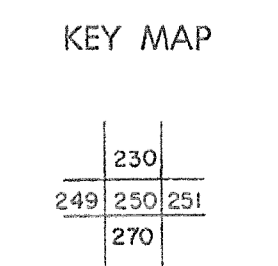
For Tax Purposes Only
 Prepared by
MICHAEL BAKER, JR., INC.
 Consulting Engineers
 Rochester, Pennsylvania

Legend

Property line	———	Original lot line	-----
Edge of pavement or roadway	———	Deed lot number	(15)
Corporation line	-----	Parcel or index number	(99)
District line	-----	Improvement	o
County line	-----	Railroad	———

Revisions

1	Original 7-1-89	9	6-22-02	H&S	17
2	REV. TO 3-1-89	10	5-8-10	H&S	18
3	SLS INC. 2/23/98	11	6/24/11	S&H	19
4	SLS INC. 3/2/00	12	5/29/15	S&H	20
5	H&S 2/19/04	13	8-8-17	SLS	21
6	3/21/05	14			22
7	3/28/06	15			23
8	3/24/07	16			24



TUCKER COUNTY
 STATE OF WEST VIRGINIA
 Office of Assessor

DISTRICT **DAVIS**
SHEET NO: 250
 Date, Aerial Photography: Nov. 1961 Date, Map: Dec. 1962
 Photo No. Scale: 1" = 400'