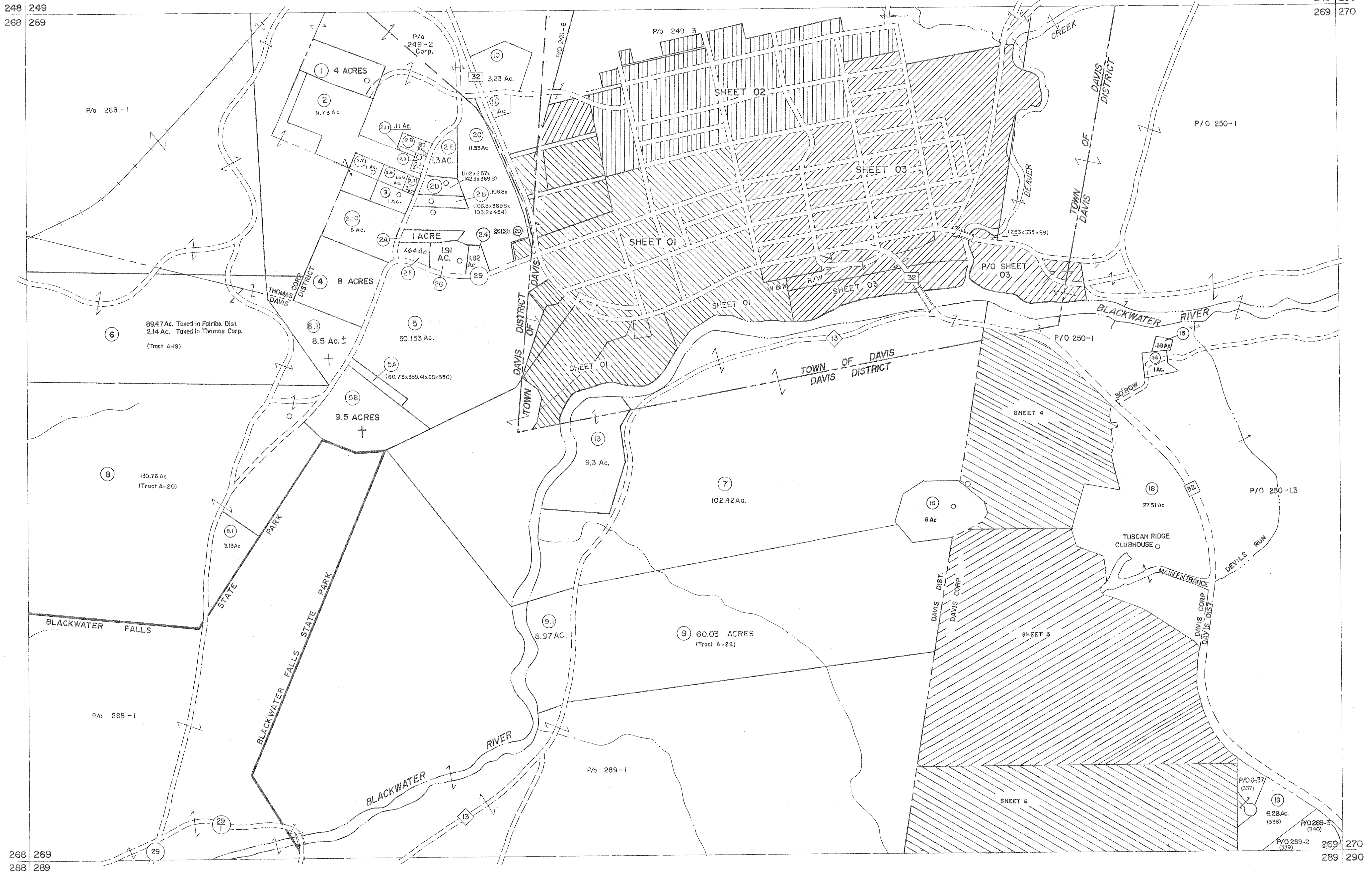


248 249  
268 269

249 250  
269 270



For Tax Purposes Only

Prepared by  
MICHAEL BAKER, JR., INC.  
Consulting Engineers  
Rochester, Pennsylvania

Legend	
Property line	Original lot line
Edge of pavement or roadway	Deed lot number
Corporation line	Parcel or index number
District line	Improvement
County line	Railroad

Revisions	
1 10-3-63	9 OGIS 1/27/93 DSH
2 11-78 BAH	10 OGIS 2-95 HD
3 Revised 7-1-88	11 O.G.I.S 4-1-96 J.E.B
4 Revised to	12 SLS INC. - DDC 5/97
5 July, 1986	13 SLS INC. 2/23/98 JWM
6 REV. TO 3-1-89	14 SLS INC. 1/27/99 DSW
7 OGIS 1/1/91	15 SLS INC. 3/2/00 JWM
8	16 ESI 1/31/01 REK
	17 ESI 2/8/02 REK
	18 ESI 2/20/03 REK
	19 HRS 2/19/04
	20 3/24/07 S.B.H
	21 6-22-08 H.S.
	22 6-21-09 H.S.
	23 5-8-10 H.S.
	24 6/24/11 S.B.H

5-4-13-11 S.B.H  
5/28/15 KEY MAP SLS  
8-7-17

249  
268 269 270  
289

TUCKER COUNTY  
STATE OF WEST VIRGINIA  
Office of Assessor

DISTRICT DAVIS  
SHEET NO: 269  
Date, Aerial Photography: November, 1961 Date, Map: Dec, 1962  
Photo No: Scale: 1" = 400'