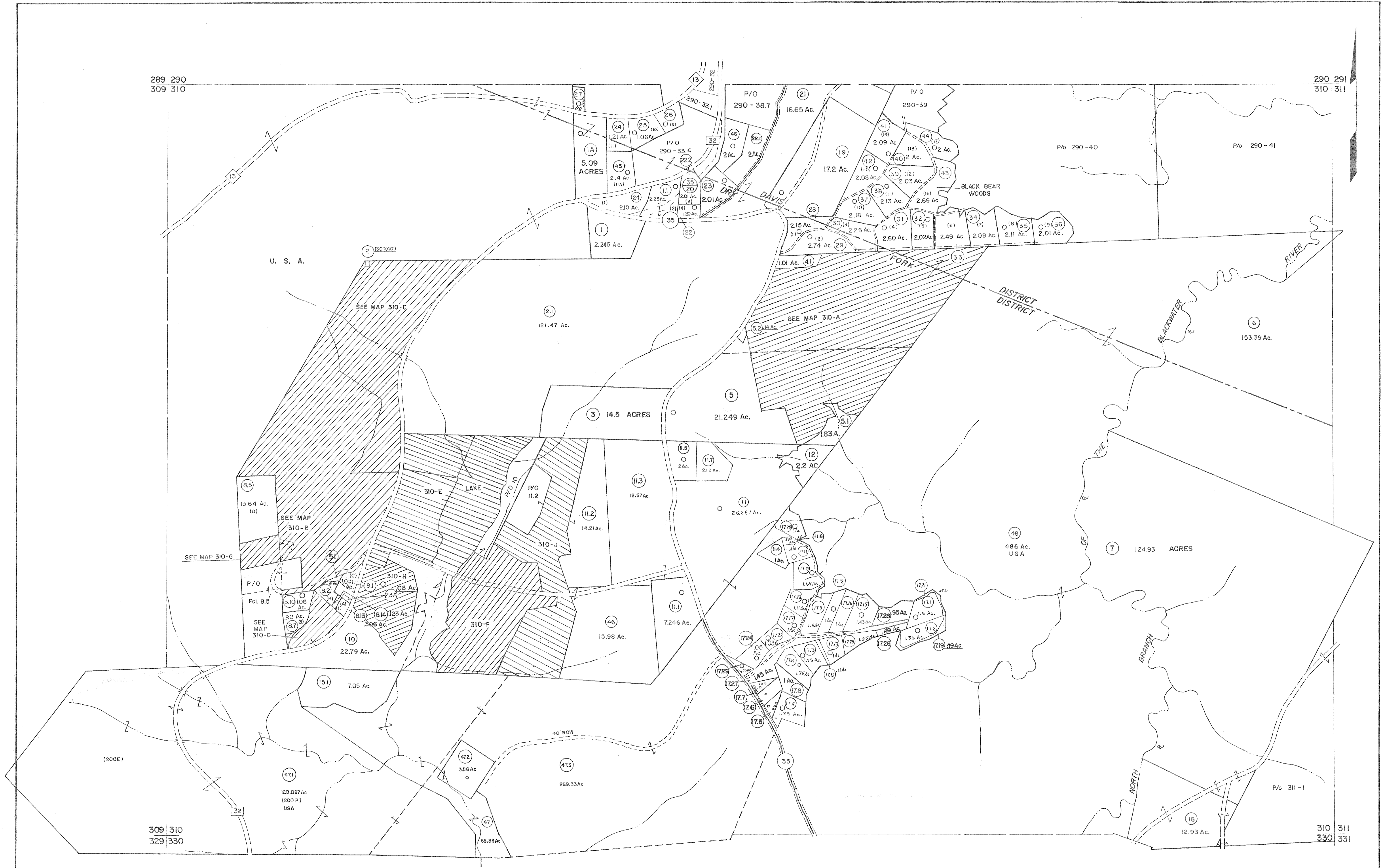


289 290  
309 310

290 291  
310 311



For Tax Purposes Only

Prepared by  
MICHAEL BAKER, JR., INC.  
Consulting Engineers  
Rochester, Pennsylvania

Legend

Property line	-----	Original lot line	-----
Edge of pavement or roadway	-----	Dead lot number	(15)
Corporation line	-----	Parcel or index number	(29)
District line	-----	Improvement	o
County line	-----	Railroad	o

Revisions

1	6-5-75	J.C.	7	OGIS 1/4/91	DSH	17	SLS INC. 1/28/99	DSW
2	11-21-78	D.C.	10	OGIS 3-19-92	TL	18	SLS INC. 3/2/00	JWM
3	Revised to 7-1-83	---	11	OGIS 1/30/93	DSH	19	ESI 2/1/01	REK
4	7-1-84	L.E.S.	12	OGIS 12/11/93	SAJ	20	ESI 2/8/02	REK
5	Revised to 7-1-85	---	13	OGIS 2-95	HD	21	ESI 2/20/03	REK
6	July 1986	TRL	14	O.G.I.S 4-1-96	J.E.B.	22	H&S 2/19/04	---
7	Revised to 7-1-87	---	15	SLS INC. - DDC	5/97	23	3/21/05	S&H
8	Revised to 3-1-89	R.E.E.	16	SLS INC. - DDC	7/97	24	3/24/07	S&H

6-22-08	44.5	5/25/15	S&H
6-21-09	44.5		
KEY MAP			
		290	S&H
		310	SLS
		330	

TUCKER COUNTY  
STATE OF WEST VIRGINIA  
Office of Assessor

DISTRICT  
DAVIS  
DRY FORK

SHEET NO: 310

Date, Aerial Photography: November, 1961 Date, Map: Dec., 1962  
Photo No. Scale: 1" = 400'