

311|312
331|332

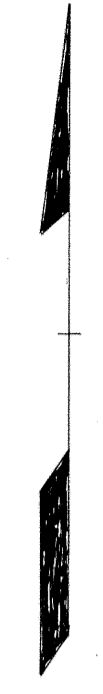
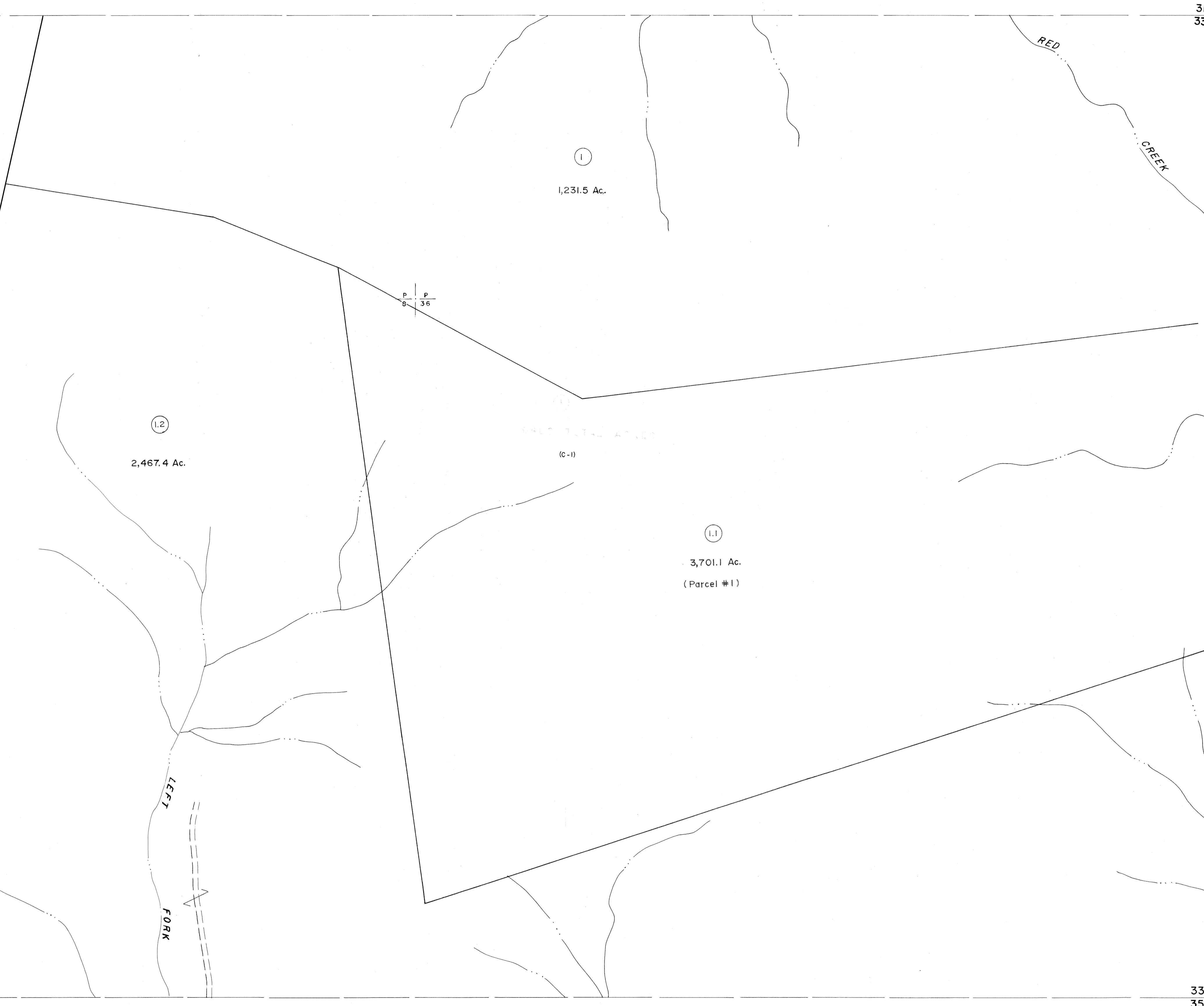
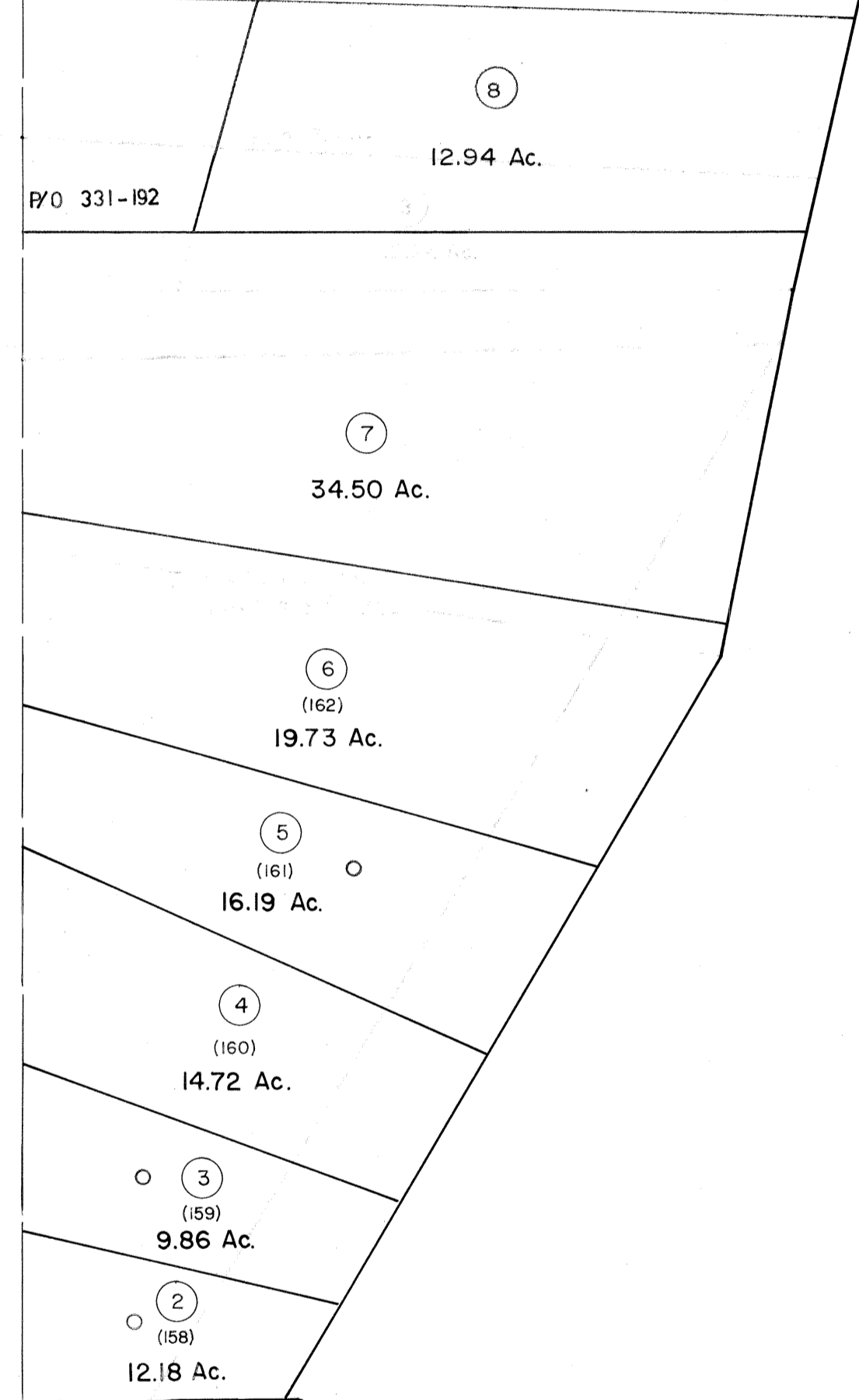
312|313
332|333

P/o 331-2

P/O 331-192

331|332
351|352

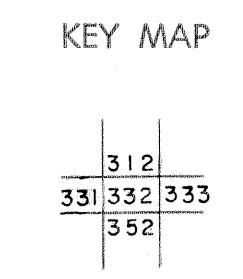
332|333
352|353



For Tax Purposes Only
 Prepared by
MICHAEL BAKER, JR., INC.
 Consulting Engineers
 Rochester, Pennsylvania

Legend	
Property line	—————
Edge of pavement or roadway	- - - - -
Corporation line	- · - · -
District line	- - - - -
County line	- - - - -
Original lot line	—————
Dead lot number	(5)
Parcel or index number	(2)
Improvement	○
Railroad	—+—+—+—

Revisions			
1	Revised to 7-1-88	9	17
2	July, 1986	TRL	10
3	REV. TO 3-1-89	R.E.B.	11
4	OGIS 1/5/91	DSH	12
5	OGIS 3-19-92	TL	13
6	OGIS 1/31/93	DSH	14
7	O.G.I.S. 4-1-96	J.E.B.	15
8	SLS INC. 1/28/99	DSW	16



TUCKER COUNTY
 STATE OF WEST VIRGINIA
 Office of Assessor

DISTRICT	DRY FORK
SHEET NO: 332	
Date, Aerial Photography: November, 1961	Date, Map: Dec., 1962
Photo No:	Scale: 1" = 400'