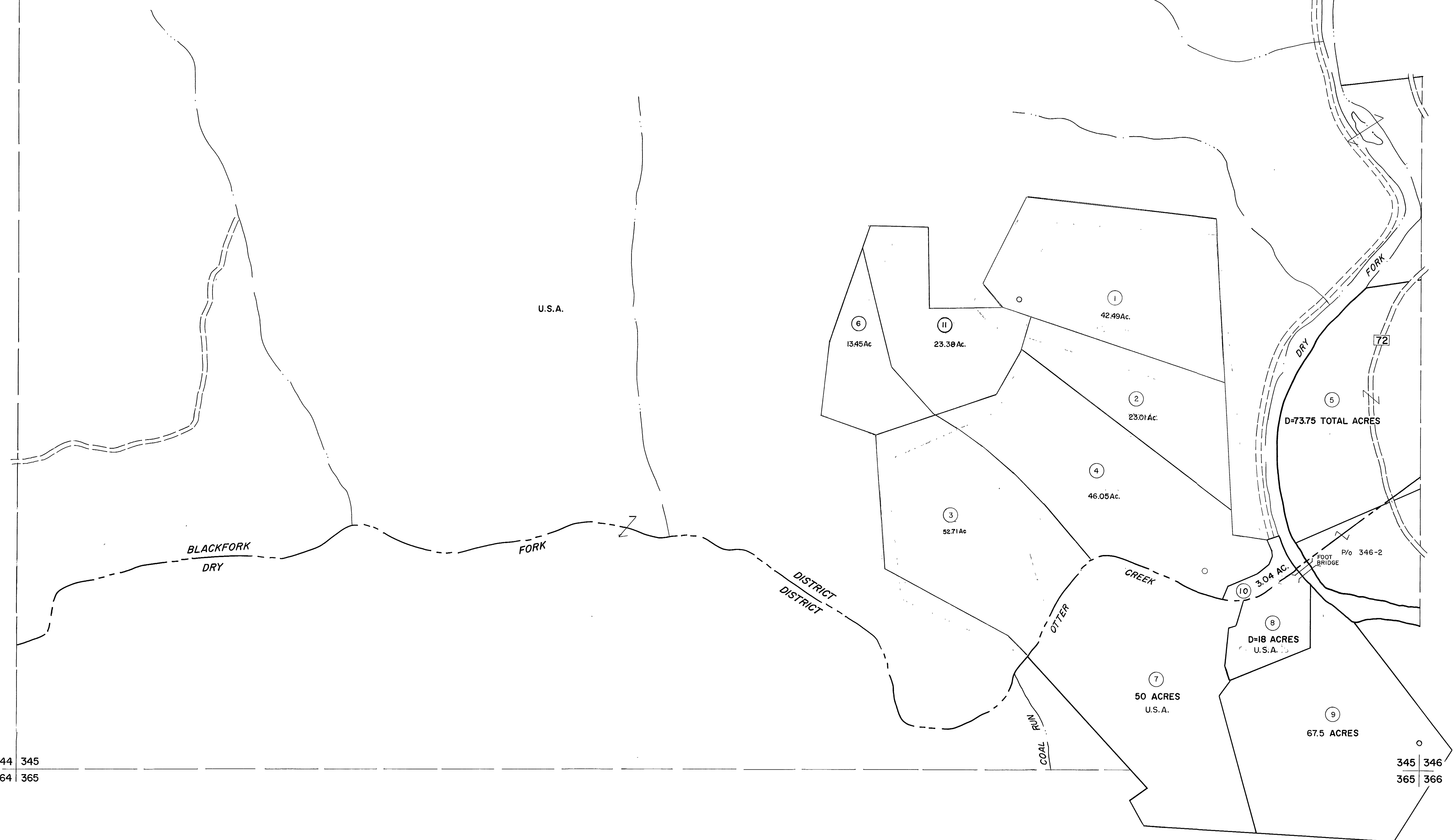


324 325  
344 345

325 326  
345 346

344 345  
364 365

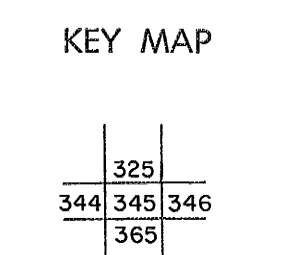
345 346  
365 366



For Tax Purposes Only  
 Prepared by  
**MICHAEL BAKER, JR., INC.**  
 Consulting Engineers  
 Rochester, Pennsylvania

Legend	
Property line	-----
Edge of pavement or roadway	-----
Corporation line	-----
District line	-----
County line	-----
Original lot line	-----
Deed lot number	(15)
Parcel or index number	(99)
Improvement	o
Railroad	-----

Revisions						
1	Revised to 7-1-00	9	ESI	2/12/02	REK	17
2	Revised to 7-1-01	10	6-22-08	++S	18	
3	OGIS 1/5/91	11	4-21-09	++S	19	
4	OGIS 3-19-92	12	5-8-10	++S	20	
5	OGIS 1/31/93	13	6/24/11	S&H	21	
6	OGIS 12/12/93	14			22	
7	SLS INC. 3/3/98	15			23	
8		16			24	



**TUCKER COUNTY**  
 STATE OF WEST VIRGINIA  
 Office of Assessor

DISTRICT **DRY FORK BLACKFORK**  
**SHEET NO: 345**  
 Date, Aerial Photography: November, 1961 Date, Map: Dec. 1962  
 Photo No: Scale: 1" = 400'