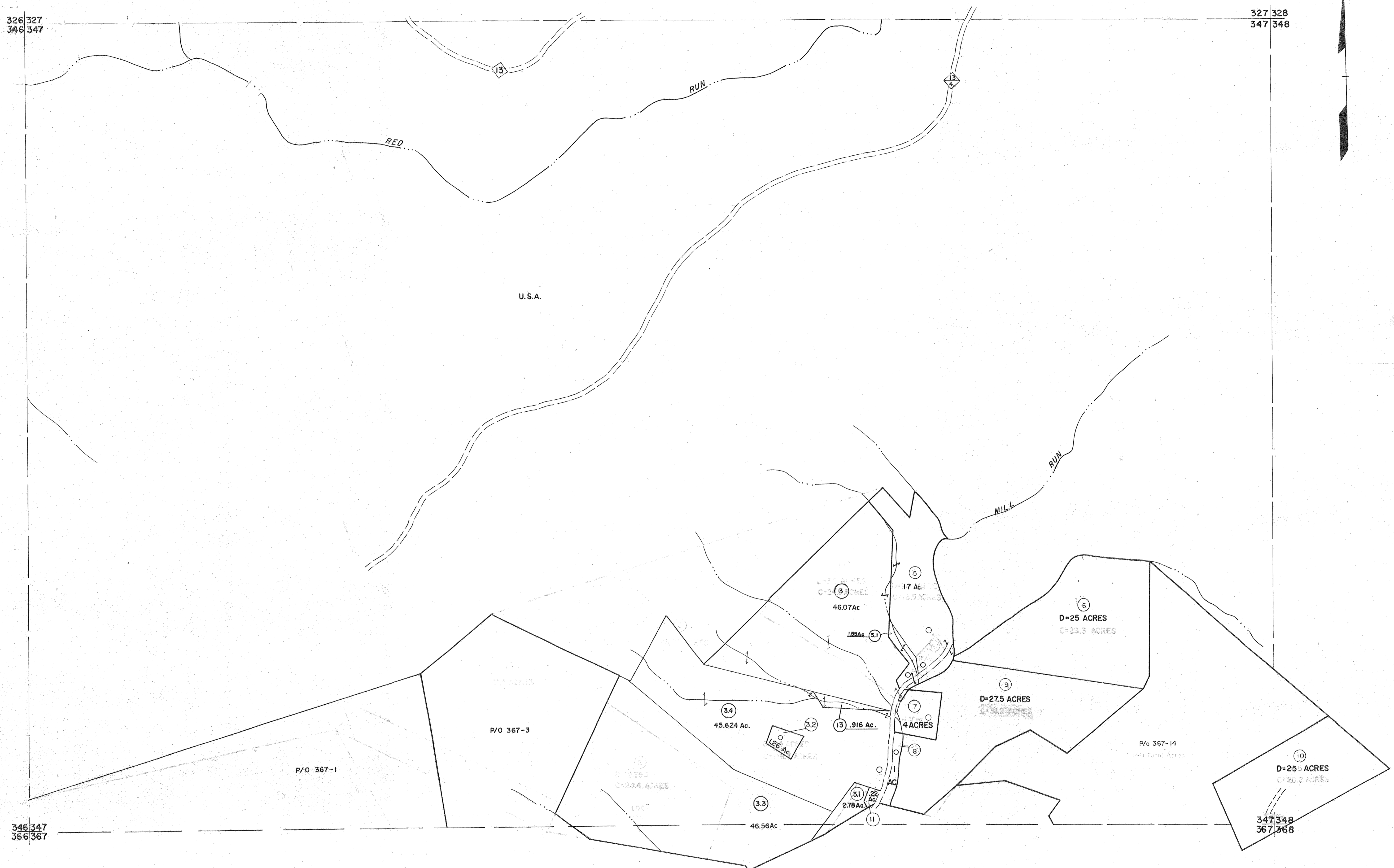


326 327  
346 347

327 328  
347 348



346 347  
366 367

347 348  
367 368

For Tax Purposes Only

Prepared by  
MICHAEL BAKER, JR., INC.  
Consulting Engineers  
Rochester, Pennsylvania

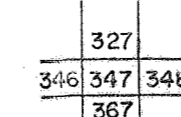
Legend

Property line	—	Original lot line	---
Edge of pavement or roadway	---	Deed lot number	(15)
Corporation line	---	Parcel or index number	○
District line	---	Improvement	○
County line	---	Railroad	—+—

Revisions

1	Revised to 7-1-83	DP	9	6-21-09	H 45	17
2	7-1-84	L.F.S.	10	5-8-10	H 43	18
3	OGIS 1/5/91	DSH	11	6/24/11	S&H	19
4	OGIS 12/12/93	SAJ	12	5/25/15	S&H	20
5	9LS INC. 1/26/99	DSW	13			21
6	ESI 2/1/01	REK	14			22
7	ESI 2/20/03	REK	15			23
8	4-22-08	H 43	16			24

KEY MAP



TUCKER COUNTY  
STATE OF WEST VIRGINIA  
Office of Assessor

DISTRICT

DRY FORK

SHEET NO: 347

Date, Aerial Photography: November, 1961 Date, Map: Dec, 1962  
Photo No. Scale: 1" = 400'