

345 346
365

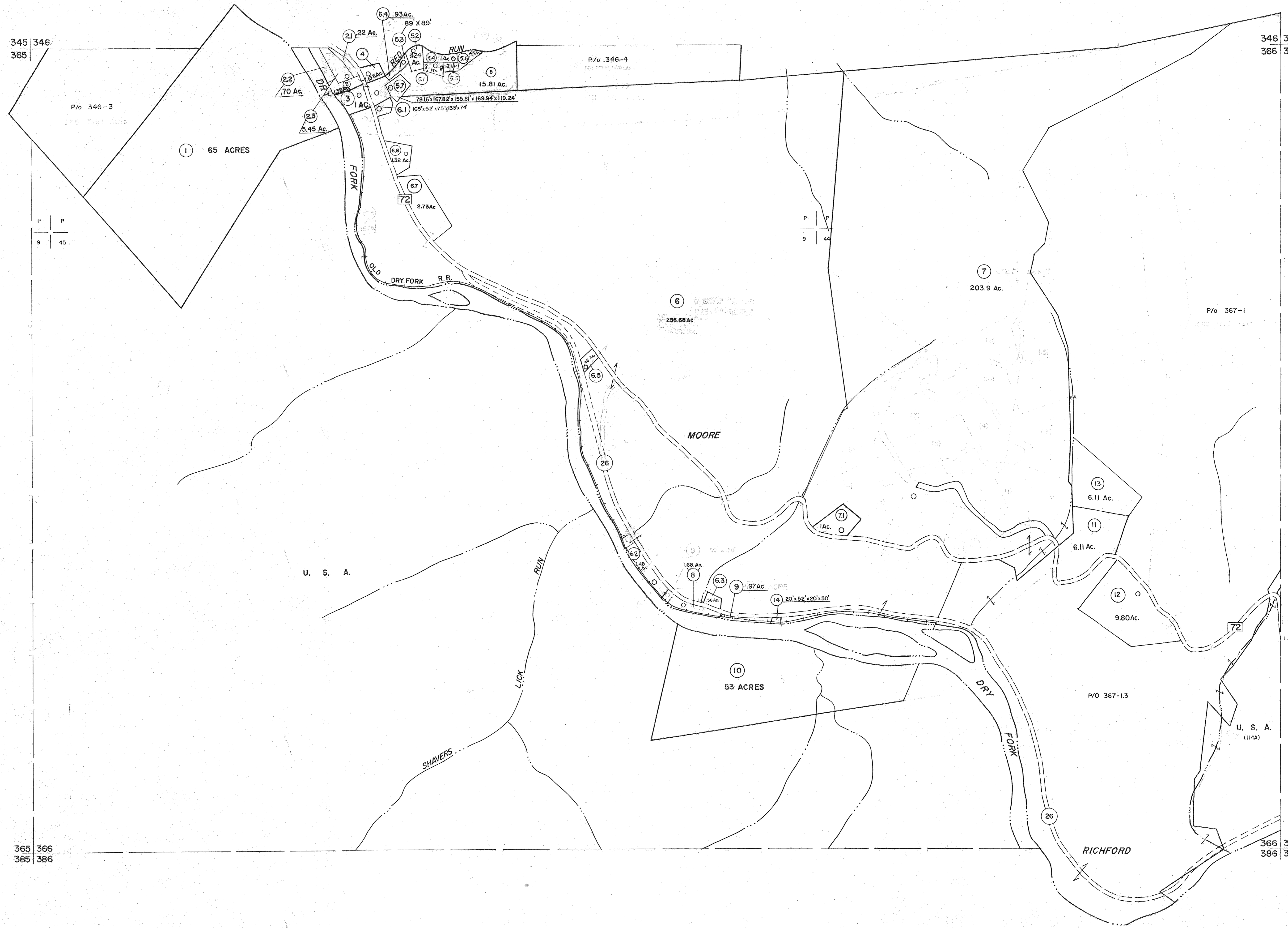
346 347
366 367

P | P
9 | 45

P | P
9 | 44

365 366
385 386

366 367
386 387

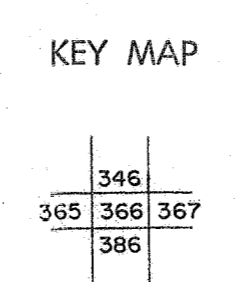


For Tax Purposes Only

Prepared by
MICHAEL BAKER, JR., INC.
Consulting Engineers
Rochester, Pennsylvania

Legend	
Property line	Original lot line
Edge of pavement or roadway	Dead lot number
Corporation line	Parcel or index number
District line	Improvement
County line	Railroad

Revisions									
1	6-6-75	AH	9	OGIS	1/31/93	DSH	17	3/28/06	S&H
2	11/22/78	DG	10	OGIS	12/12/93	SAJ	18	3/24/07	S&H
3	1/1/83	DC	11	SLS INC.	3/3/98	JWM	19	4-22-08	†-S
4	2-1-84	L.E.S.	12	SLS INC.	1/28/99	DSW	20	6/27/11	S&H
5	July, 1985	REB	13	SLS INC.	3/2/00	JWM	21	5/25/15	S&H
6	10/19/89	REB	14	ESI	2/2/01	REK	22		
7	OGIS	1/6/91	DSH	15	H&S	2/19/04	23		
8	OGIS	1/6/91	DSH	16		3/21/05	S&H	24	



TUCKER COUNTY
STATE OF WEST VIRGINIA
Office of Assessor

DISTRICT
DRY FORK

SHEET NO: 366

Date, Aerial Photography: November, 1961 Date, Map: Dec., 1962
Photo No: Scale: 1" = 400'