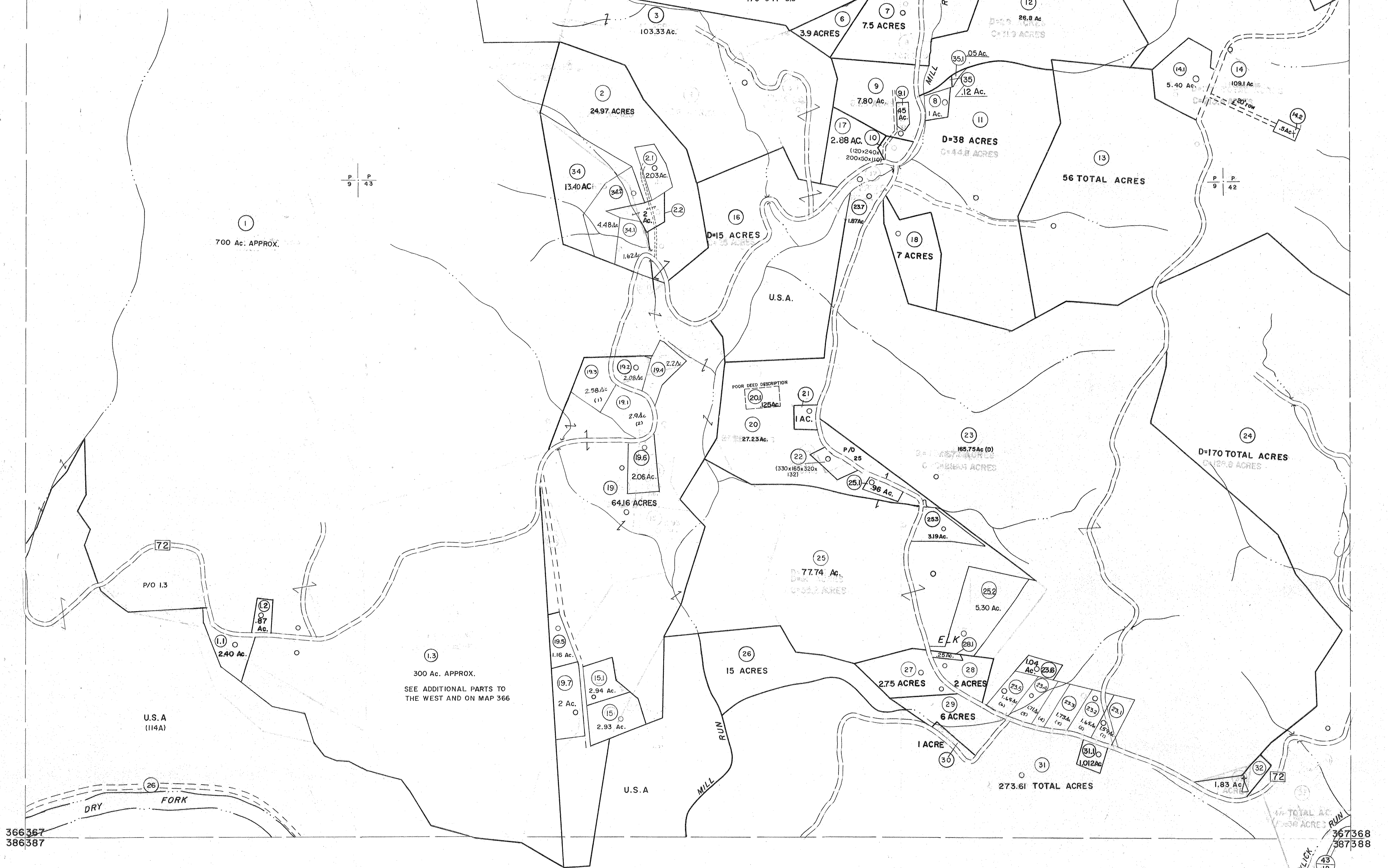


346347
366367

347348
367368



For Tax Purposes Only

Prepared by
MICHAEL BAKER, JR., INC.
Consulting Engineers
Rochester, Pennsylvania

Legend

Property line	---	Original lot line	---
Edge of pavement or roadway	---	Deed lot number	(15)
Corporation line	---	Parcel or index number	(99)
District line	---	Improvement	o
County line	---	Railroad	---

Revisions

1	6-3-67	9	OGIS 1/31/93	DSH	17	ESI 2/20/03	REK
2	11-22-78	10	OGIS 2-95	HD	18	HBS 2/19/04	
3	Revised to 7-1-85	11	O.G.I.S 4-1-96	J.E.B	19	3/21/05	S.B.H
4	7-1-84	12	SLS INC. - DDC 5/97		20	6-22-08	H.S.
5	July, 1986	13	SLS INC. 1/28/99	DSW	21	7/4/11	S.B.H
6	Rev. to 3-1-89	14	SLS INC. 3/2/00	JWM	22	5/25/15	S.B.H
7	OGIS 1/6/91	15	ESI 2/12/02	REK	23		
8		16			24		

KEY MAP

347
366367368
367

TUCKER COUNTY
STATE OF WEST VIRGINIA
Office of Assessor

DISTRICT

DRY FORK

SHEET NO: 367

Date, Aerial Photography: November, 1961 Date, Map: Dec. 1962
Photo No: Scale: 1"=400'