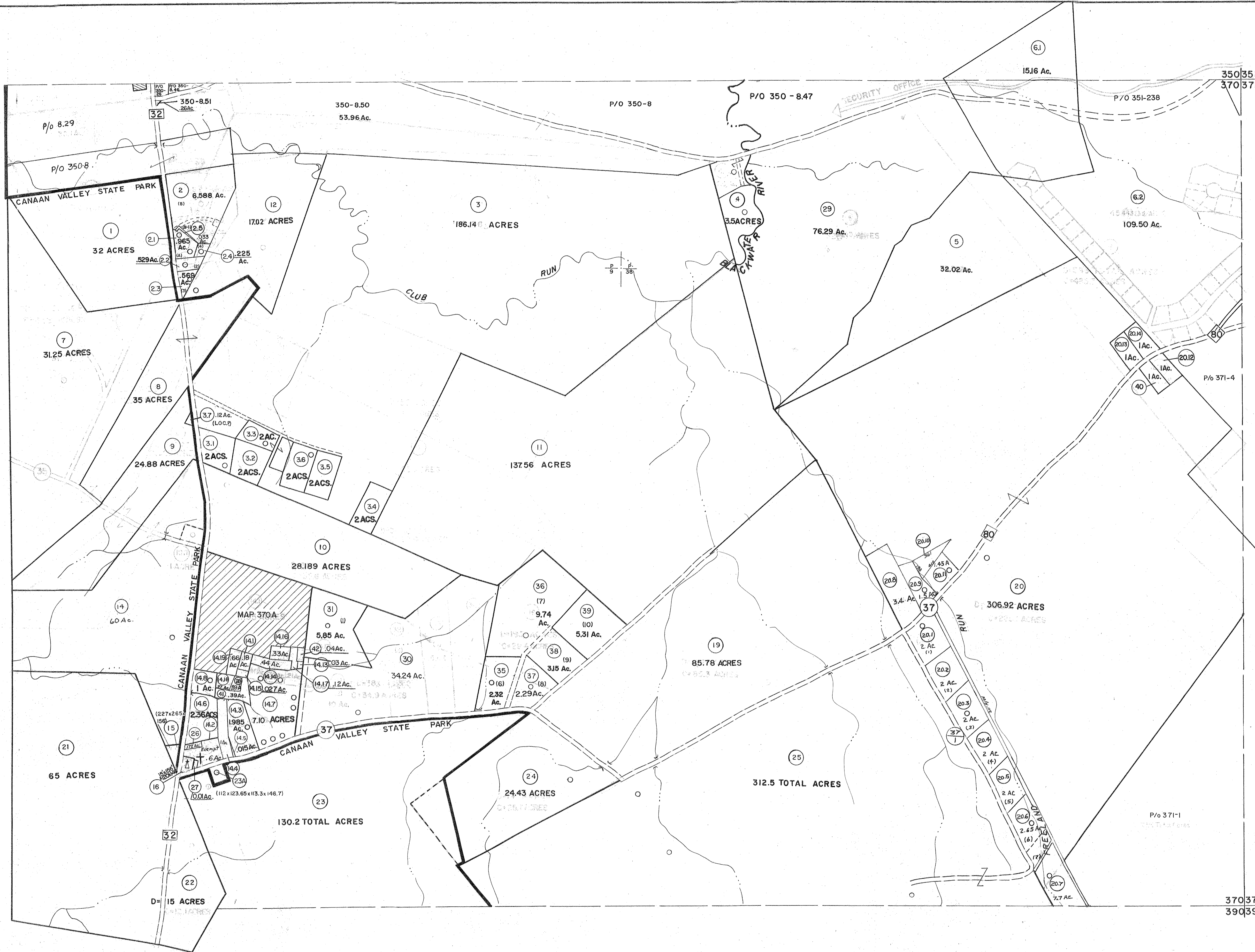


349350  
369370

350351  
370371

369370  
389390

370371  
390391



**For Tax Purposes Only**

Prepared by  
**MICHAEL BAKER, JR., INC.**  
Consulting Engineers  
Rochester, Pennsylvania

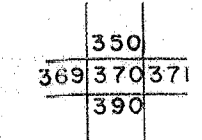
**Legend**

Property line	—	Original lot line	- - - - -
Edge of pavement or roadway	—	Deed lot number	(55)
Corporation line	—	Parcel or index number	(99)
District line	—	Improvement	o
County line	—	Railroad	—

**Revisions**

1	8-6-75	SH	9	Rev. to 3-1-89	R.E.B	17	SLS INC. 1/28/99	DSW
2	11-27-78	DG	10	OGIS 1/8/91	DSH	18	SLS INC. 3/2/00	JWM
3	REV. TO 7-1-83	NCS	11	OGIS 3-19-92	TL	19	ESI 2/2/01	REK
4	7-1-84	L.E.S.	12	OGIS 1/31/93	DSH	20	ESI 2/12/02	REK
5	Revised to 7-1-85	TR	13	OGIS 12/12/93	SAJ	21	ESI 2/20/03	REK
6	REV. TO 7-1-85	NCS	14	OGIS 2-95	HD	22	3/21/05	S&H
7	July, 1986	TRL	15	O.G.I.S 4-1-96	J.E.B	23	6/27/11	S&H
8	Revised to 7-1-87	SH	16	SLS INC. 3/3/98	JWM	24	5/25/15	S&H

**KEY MAP**



**TUCKER COUNTY**  
STATE OF WEST VIRGINIA  
Office of Assessor

**DISTRICT**

**DRY FORK**

**SHEET NO: 370**

Date, Aerial Photography: November, 1961 Date, Map: Dec, 1962  
Photo No: Scale: 1"=400'