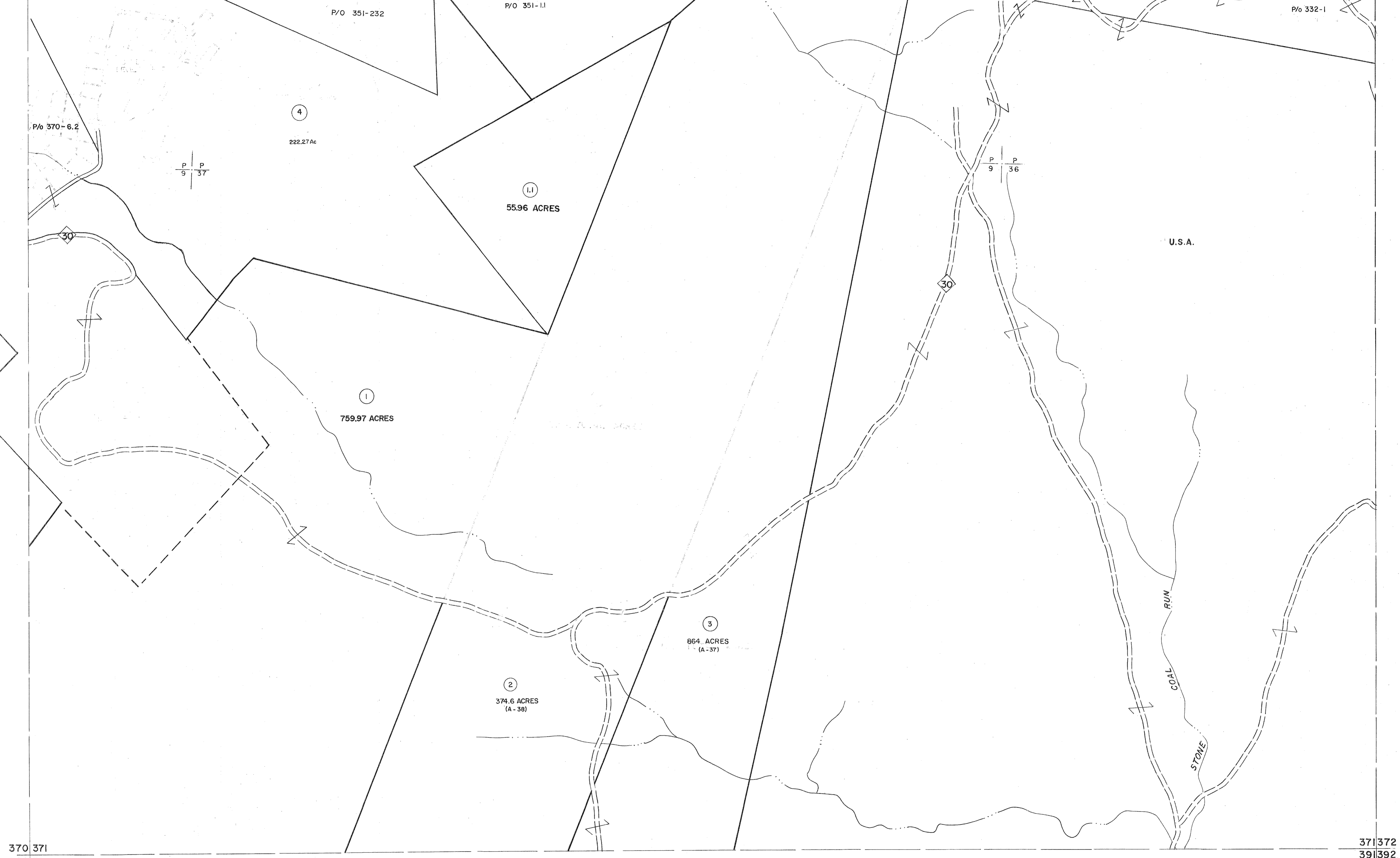


350 351
370 371

351 352
371 372



370 371
390 391

371 372
391 392

For Tax Purposes Only

Prepared by
MICHAEL BAKER, JR., INC.
Consulting Engineers
Rochester, Pennsylvania

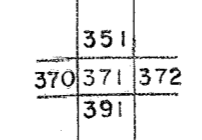
Legend

Property line	—————	Original lot line	- - - - -
Edge of pavement or roadway	—————	Deed lot number	(15)
Corporation line	—————	Parcel or index number	(29)
District line	—————	Improvement	o
County line	—————	Railroad	—+—+—+—

Revisions

1	11-27-78	DG	9	ESI	2/2/01	REK	17
2	REV. TO 7-1-83	NCS	10	ESI	2/12/02	REK	18
3	7-1-84	L.E.S.	11	ESI	2/20/03	REK	19
4	REV. TO 7-1-85	NCS	12	5-4-13			20
5	July, 1986	TRL	13				21
6	OGIS 1/6/91	DSH	14				22
7	OGIS 2/1/93	DSH	15				23
8	SLS INC. 3/2/00	JWM	16				24

KEY MAP



TUCKER COUNTY
STATE OF WEST VIRGINIA
Office of Assessor

DISTRICT **DRY FORK**

SHEET NO: 371

Date, Aerial Photography: November, 1961 Date, Map: Dec, 1962
Photo No: Scale: 1" = 400'