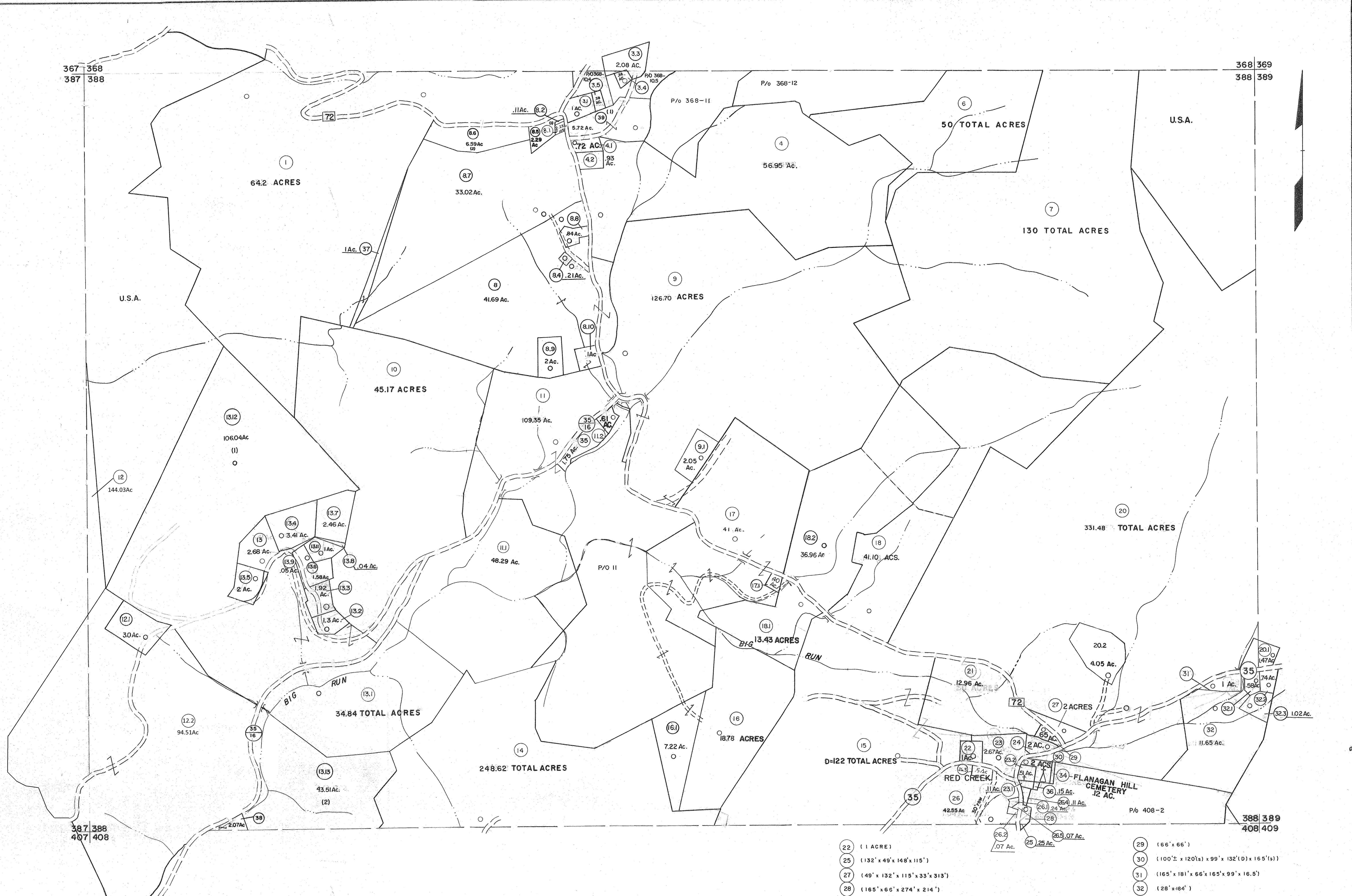


367 368
387 388

368 369
388 389



For Tax Purposes Only

Prepared by
MICHAEL BAKER, JR., INC.
Consulting Engineers
Rochester, Pennsylvania

Legend

Property line	—	Original lot line	---
Edge of pavement or roadway	—	Deed lot number	(15)
Corporation line	---	Parcel or index number	(99)
District line	---	Improvement	o
County line	---	Railroad	—

Revisions

1	10-3-63	9	Rev. to 3-1-89	REB	17	SLS INC. 3/4/98	JWM
2	6-3-66	10	OGIS 1/6/91	DSH	18	SLS INC. 1/28/99	DSW
3	11-21-78	11	OGIS 3-19-92	TL	19	SLS INC. 2/21/00	JAW
4	REV. TO 7-1-83	12	OGIS 2/1/93	DSH	20	ESI 2/2/01	REK
5	7-1-84	13	OGIS 12/12/93	SAJ	21	ESI 2/20/02	REK
6	REV. TO 7-1-85	14	OGIS 2-95	HD	22	3/21/05	S&H
7	July, 1986	15	D.G.I.S. 4-1-96	J.E.B	23	3/28/06	S&H
8	Revised to 7-1-87	16	SLS INC. - DDC 5/97		24	3/24/07	S&H

4-22-08 #43
6-21-09 #45
5-8-10 #45
6/27/11 S&H
368
387 388 389
408
409
4/16/2019 Andrew Meador

TUCKER COUNTY
STATE OF WEST VIRGINIA
Office of Assessor

DISTRICT
DRY FORK

SHEET NO: 388

Date, Aerial Photography: Nov. 1961
Photo No: Date, Map: Dec. 1962
Scale: 1" = 400'