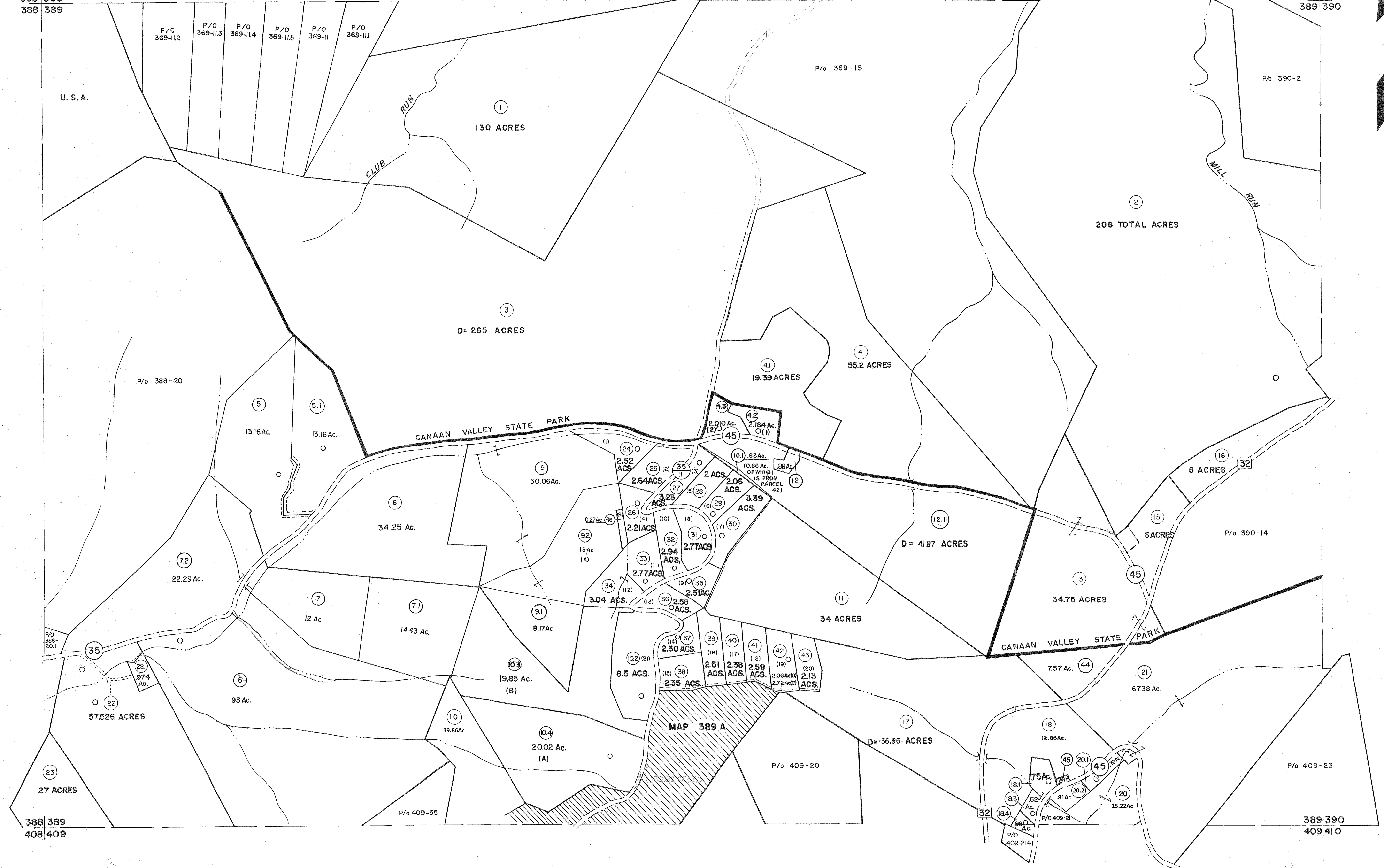


368 369  
388 389

369 370  
389 390



**For Tax Purposes Only**

Prepared by  
**MICHAEL BAKER, JR., INC.**  
Consulting Engineers  
Rochester, Pennsylvania

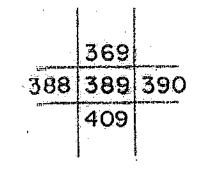
**Legend**

Property line	Original lot line	Deed lot number	(15)
Edge of pavement or roadway	Parcel or index number	Improvement	(22)
Corporation line	County line	Railroad	(O)

**Revisions**

1	11-27-78	DG.	9	OGIS	2/1/93	DSH	17	3/21/05	S&H
2	REV. TO 7-1-83	NCS	10	OGIS	12/12/93	SAJ	18	6-22-08	H&S
3	7-1-84	L.E.S.	11	OGIS	2-95	HD	19	6-21-09	H&S
4	Revised to	TRL	12	O.G.I.S.	4-1-96	J.E.B.	20	6/28/11	S&H
5	July, 1986	TRL	13	SLS INC.	1/28/99	DSW	21	5-4-13	H&S
6	Revised to 7-1-87	TRL	14	SLS INC.	2/21/00	JAW	22	5/25/15	S&H
7	Rev. to 3-1-89	R.E.B.	15	ES1	2/2/01	REK	23	3/1/2019	Andrew Meador
8	OGIS	1/6/91	DSH	16	H&S	2/19/04	24		

**KEY MAP**



**TUCKER COUNTY**  
STATE OF WEST VIRGINIA  
Office of Assessor

**DISTRICT**

**DRY FORK**

**SHEET NO: 389**

Date, Aerial Photography: November 1961 Date, Map: Dec., 1962  
Photo No: Scale: 1" = 400'