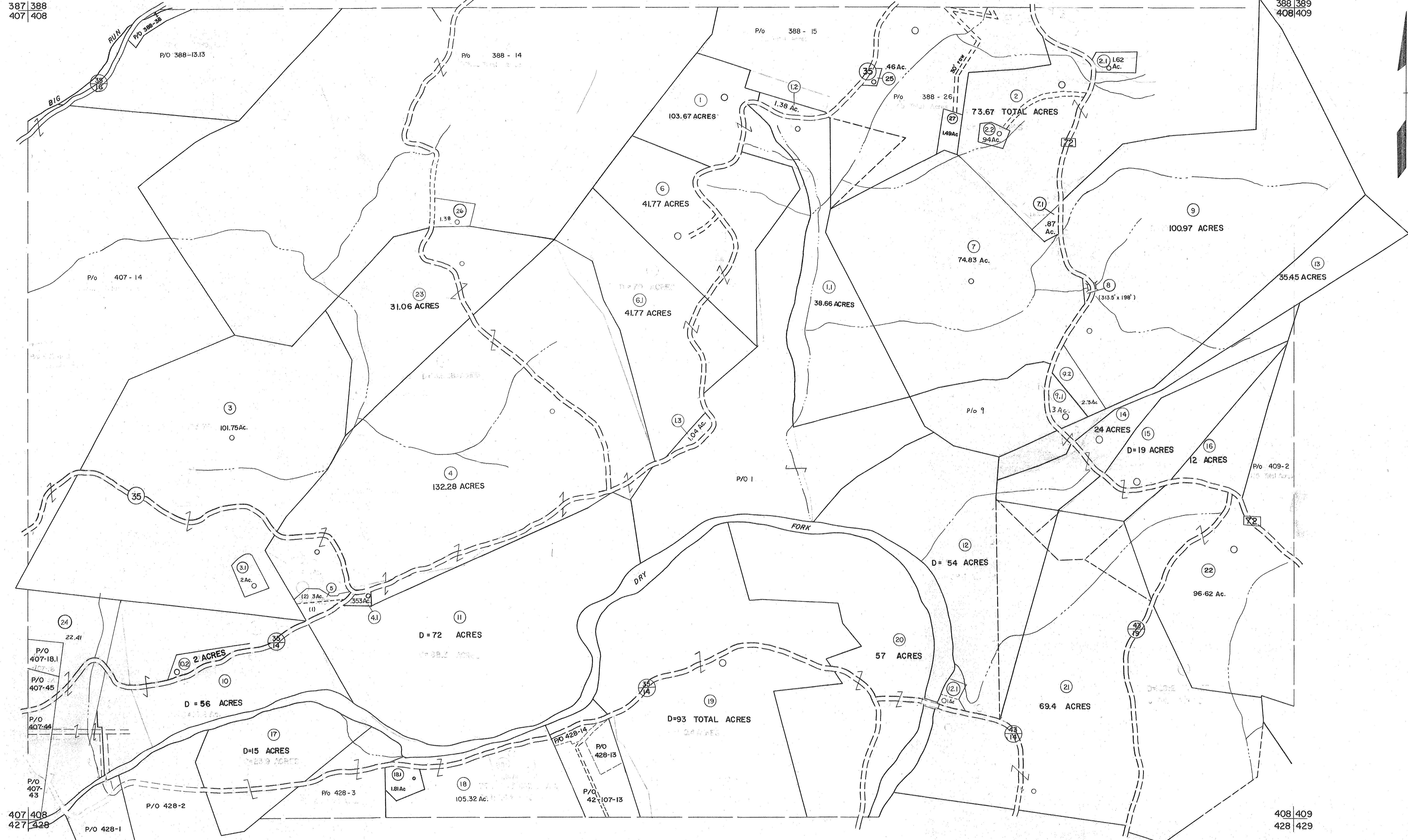


387|388  
407|408

388|389  
408|409



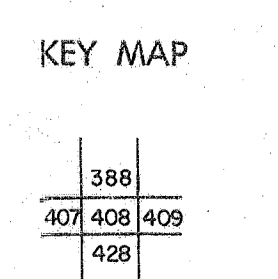
**For Tax Purposes Only**  
 Prepared by  
**MICHAEL BAKER, JR., INC.**  
 Consulting Engineers  
 Rochester, Pennsylvania

**Legend**

Property line	—	Original lot line	- - - - -
Edge of pavement or roadway	—	Dead lot number	(15)
Corporation line	—	Parcel or index number	(99)
District line	—	Improvement	o
County line	—	Railroad	—

**Revisions**

1	6-3-68	9	OGIS	1/6/91	DSH	17	ESI	2/20/03	REK
2	4-75	10	T.G.	3-19-92	TL	18	6-22-08	445	
3	11-27-78	11	OGIS	2/1/93	DSH	19	6-21-09	445	
4	REV. TO 7-1-83	12	OGIS	12/12/93	SAJ	20	5-10-10	445	
5	7-1-84	13	O.G.I.S.	4-1-96	J.E.B.	21	6/27/11	S&H	
6	REV. TO 7-1-85	14	SLS INC.	5/97		22	5-4-13	445	
7	July, 1986	15	SLS INC.	1/28/99	DSW	23	5/25/15	S&H	
8	Rev. 5-3-87	16	ESI	2/2/01	REK	24			



**TUCKER COUNTY**  
 STATE OF WEST VIRGINIA  
 Office of Assessor

DISTRICT **DRY FORK**  
 SHEET NO: **408**  
 Date, Aerial Photography: \_\_\_\_\_ Date, Map: \_\_\_\_\_  
 Photo No: \_\_\_\_\_ Scale: \_\_\_\_\_