

409 410  
429 430

410 411  
430 431

429 430

430 431

For Tax Purposes Only

Prepared by  
MICHAEL BAKER, JR., INC.  
Consulting Engineers  
Rochester, Pennsylvania

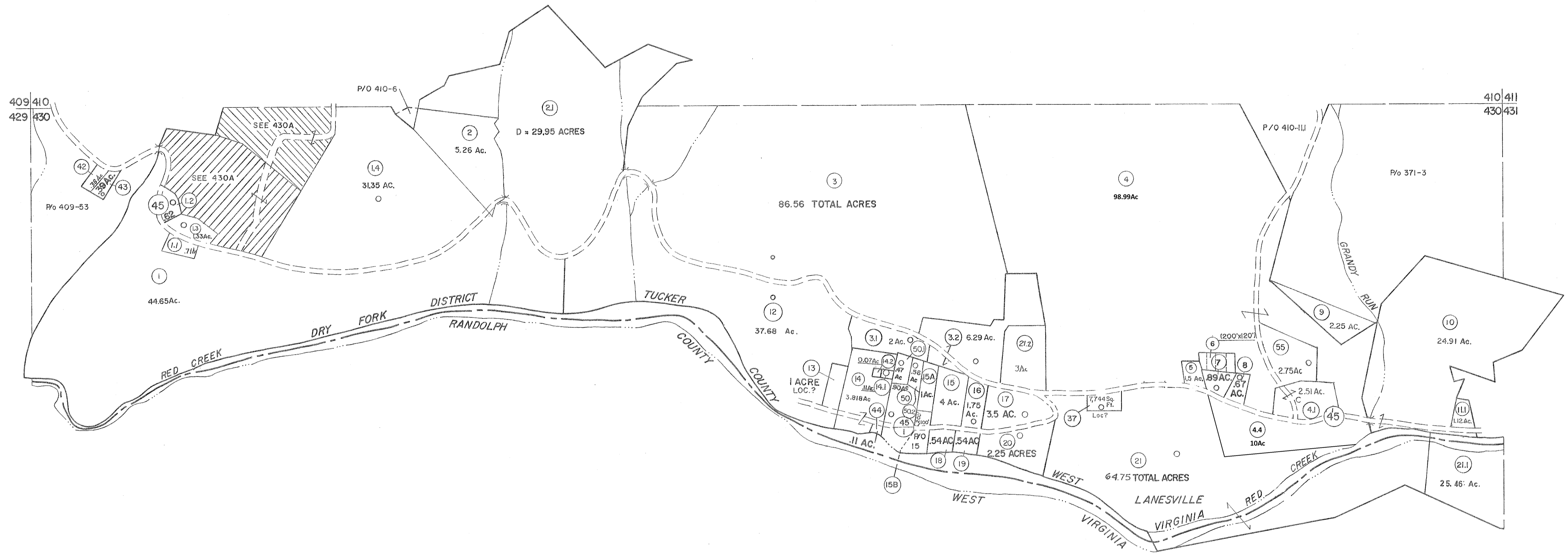
Legend	
Property line	-----
Edge of pavement or roadway	-----
Corporation line	-----
District line	-----
County line	-----
Original lot line	-----
Deed lot number	(15)
Parcel or index number	(22)
Improvement	o
Railroad	-----

Revisions					
1	6-3-64	9	OGIS	2/1/93	DSH
2	11-27-70	10	OGIS	12/12/93	SAJ
3	REV. TO 7-1-83	11	O.G.I.S.	4-1-96	J.E.B.
4	7-1-84	12	SLS INC.	- DDC	5/97
5	7-1-84	13	SLS INC.	3/4/98	JWM
6	July, 1995	14	SLS INC.	1/28/99	JWM
7	OGIS	15	SLS INC.	3/03/00	JAW
8	OGIS	16	ESI	2/2/01	REK
17	ESI	2/12/02	REK		
18	H&S	2-04			
19		3/21/05	S&H		
20		3/28/06	S&H		
21		3/23/07	S&H		
22		6-22-08	tt	4.5	
23		6-21-09	tt	8.5	
24		5-2-10	tt	4.5	

6/27/11  
5-4-13 1145  
KEY MAP  
61017  
429 430 431  
3/1/2019 Andrew Meador

TUCKER COUNTY  
STATE OF WEST VIRGINIA  
Office of Assessor

DISTRICT  
DRY FORK  
SHEET NO: 430  
Date, Aerial Photography: November, 1961 Date, Map: Dec., 1962  
Photo No: Scale: 1" = 400'



- 22 10,331 Sq. Ft.
- 23 5,100 Sq. Ft.
- 24 Lot 8 & 4,000 Sq. Ft.
- 25 Lot 10
- 26 Lot 6
- 27 .25 Ac.
- 28 1.25 Ac.
- 29 10,082 Sq. Ft.
- 30 90 Sq. Rds.
- 31 .12 & .50 Ac.
- 32 6,400 Sq. Ft.
- 33 .25 Ac.
- 34 69 Sq. Pls.
- 35 Lot 9
- 36 .25 Ac.
- 38 1/2 of Lot 26
- 39 Lot 21
- 40 70 Ac.
- 41 50 Ac.
- 51 1/4 Ac.