

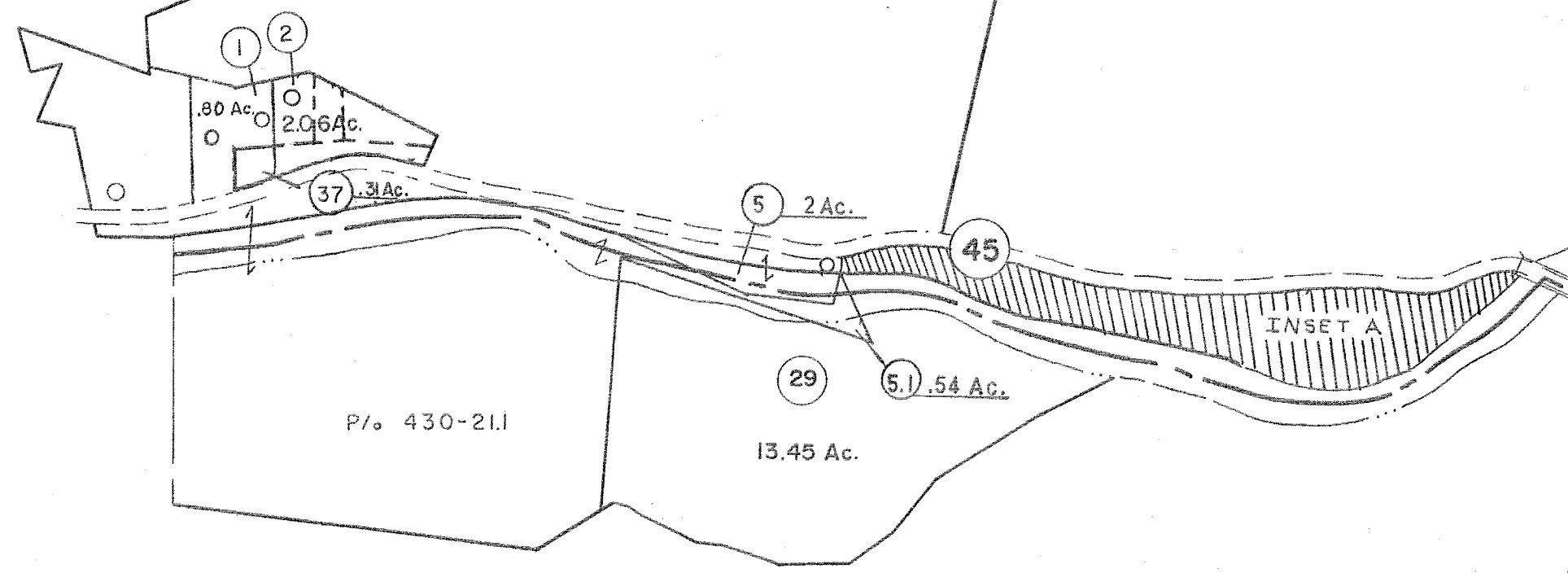
410 411
430 431

411 412
431 432

P/ 371-3

U.S.A.

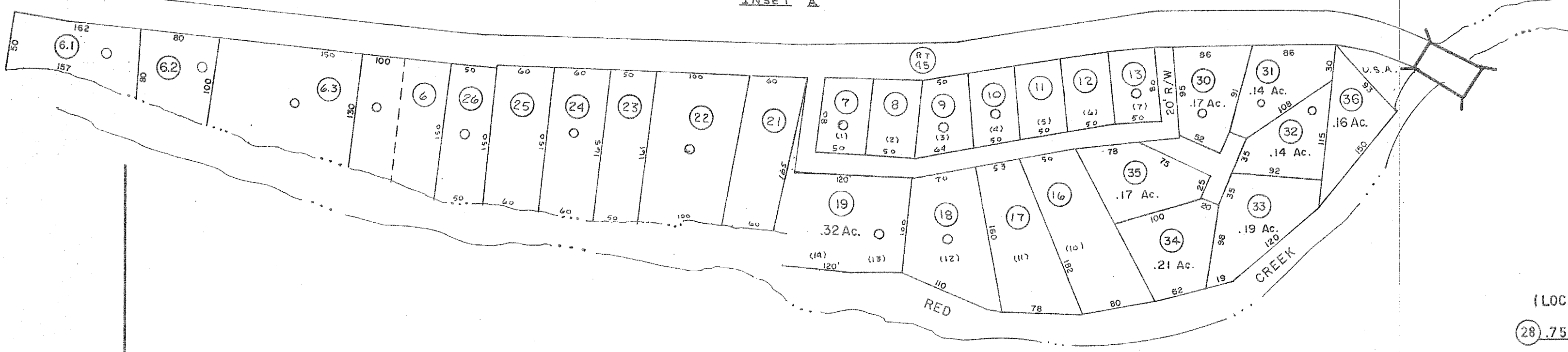
U.S.A.



DRY FORK DISTRICT
TUCKER COUNTY
RANDOLPH COUNTY

WEST VIRGINIA
WEST VIRGINIA

INSET A



(LOC.?)

(28) .75 Ac.

430 431

431 432

For Tax Purposes Only

Prepared by
MICHAEL BAKER, JR., INC.
Consulting Engineers
Rochester, Pennsylvania

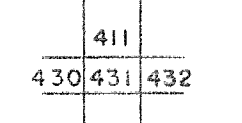
Legend

| | | | |
|-----------------------------|---|------------------------|------|
| Property line | — | Original lot line | — |
| Edge of pavement or roadway | — | Deed lot number | (15) |
| Corporation line | — | Parcel or index number | (28) |
| District line | — | Improvement | ○ |
| County line | — | Railroad | — |

Revisions

| | | | | | | | | | | |
|---|-------------------|--------|----|----------|----------|-------|----|---------|---------|-----|
| 1 | 6-5-75 | JC | 9 | OGIS | 3-19-92 | TL | 17 | ESI | 2/20/03 | REK |
| 2 | 11-27-78 | OG | 10 | OGIS | 2/1/93 | DSH | 18 | 6/27/11 | SRH | |
| 3 | REV. TO 7-1-83 | NCS | 11 | OGIS | 12/12/93 | SAJ | 19 | 8-10-17 | SLS | |
| 4 | Revised to 7-1-87 | | 12 | OGIS | 2-95 | HD | 20 | | | |
| 5 | July, 1986 | TRL | 13 | O.G.I.S. | 4-1-96 | J.E.B | 21 | | | |
| 6 | Revised to 7-1-87 | | 14 | SLS INC. | 1/28/98 | DSW | 22 | | | |
| 7 | REV. TO 3-1-89 | R.E.B. | 15 | SLS INC. | 3/03/00 | JAW | 23 | | | |
| 8 | OGIS | 1/6/91 | 16 | ESI | 2/2/01 | REK | 24 | | | |

KEY MAP



TUCKER COUNTY

STATE OF WEST VIRGINIA

Office of Assessor

DISTRICT

DRY FORK

SHEET NO: 431

Date, Aerial Photography: Nov. 1961
Photo No:
Date, Map: Dec. 1962
Scale: 1" = 400'