

227 228
247 248 P/O 227-2

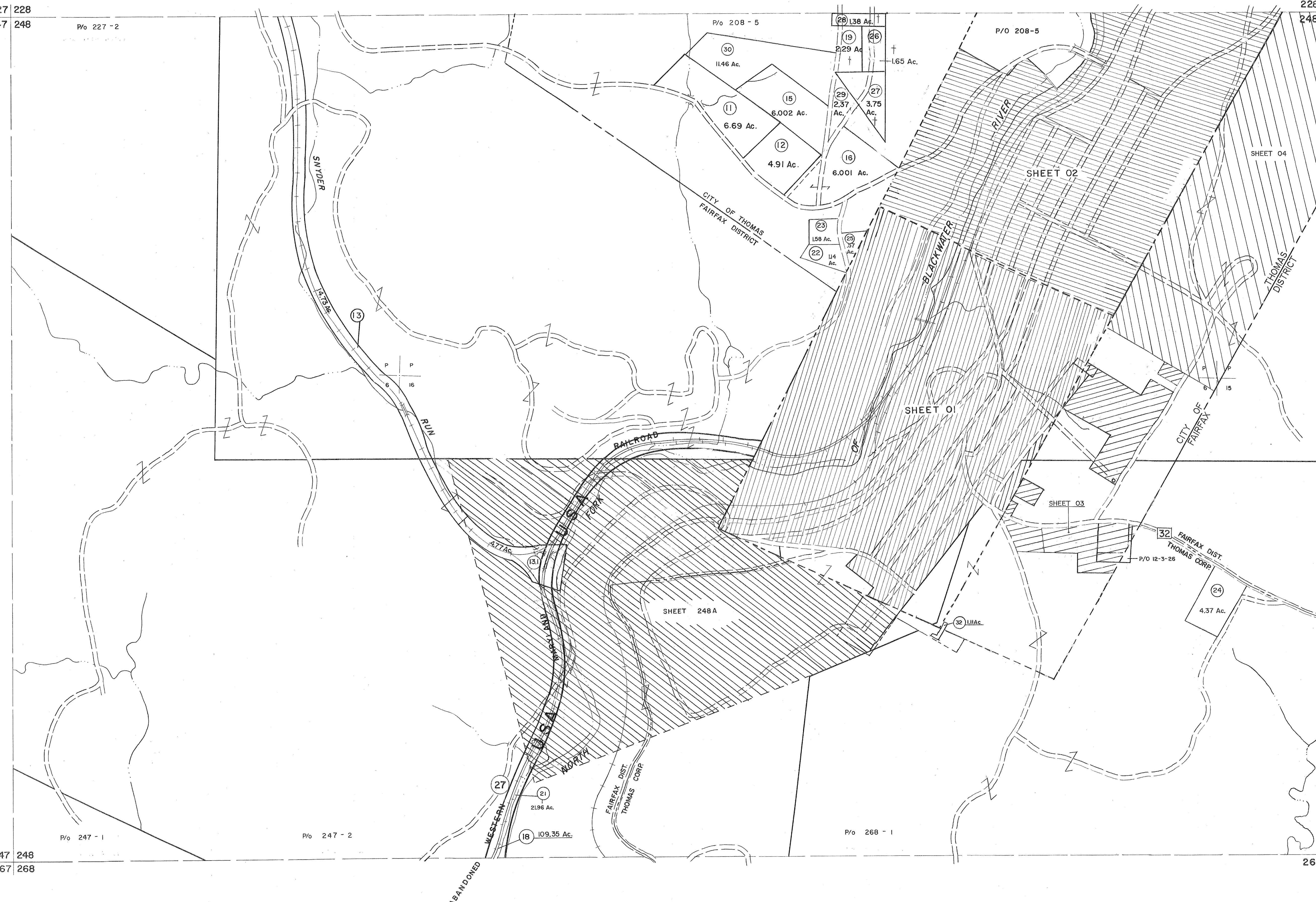
228 229
248 249

P/O 247-1
247 248
267 268

P/O 247-2

P/O 268-1

249
268 269



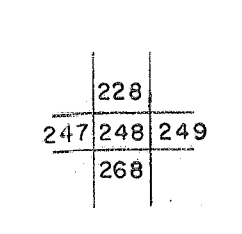
Legend

Property line	—	Original lot line	- - - - -
Edge of pavement or roadway	—	Deed lot number	(15)
Corporation line	—	Parcel or index number	(9)
District line	—	Improvement	o
County line	—	Railroad	—

Revisions

1	11-27-78	T.G.	9	O.G.I.S. 4-1-98	J.E.B.	17	6-22-08	4.5
2	REV. TO 7-1-86	NGS	11	SLS INC. - DDC 5/97		18	6-21-09	4.5
3	REV. TO 3-1-89	REB.	12	SLS INC. - DDC 7/97		19	5-4-13	4.5
4	OGIS 1/1/91	DSH	13	SLS INC. 2/23/98	J.W.M.	20		
5	OGIS 3-19-92	TL	14	SLS INC. 1/27/99	DSW	21		
6	OGIS 1/25/93	DSH	15	SLS INC. 3/1/00	J.W.M.	22		
7	OGIS 2-95	HD	16	ESI 2/8/02	REK	23		
8				3/21/05	S&H	24		

KEY MAP



TUCKER COUNTY
STATE OF WEST VIRGINIA
Office of Assessor

DISTRICT
FAIRFAX - DAVIS
SHEET NO: 248
Date, Aerial Photography: November, 1961 Date, Map: Dec. 1962
Photo No: Scale: 1" = 400'

For Tax Purposes Only
Prepared by
MICHAEL BAKER, JR., INC.
Consulting Engineers
Rochester, Pennsylvania