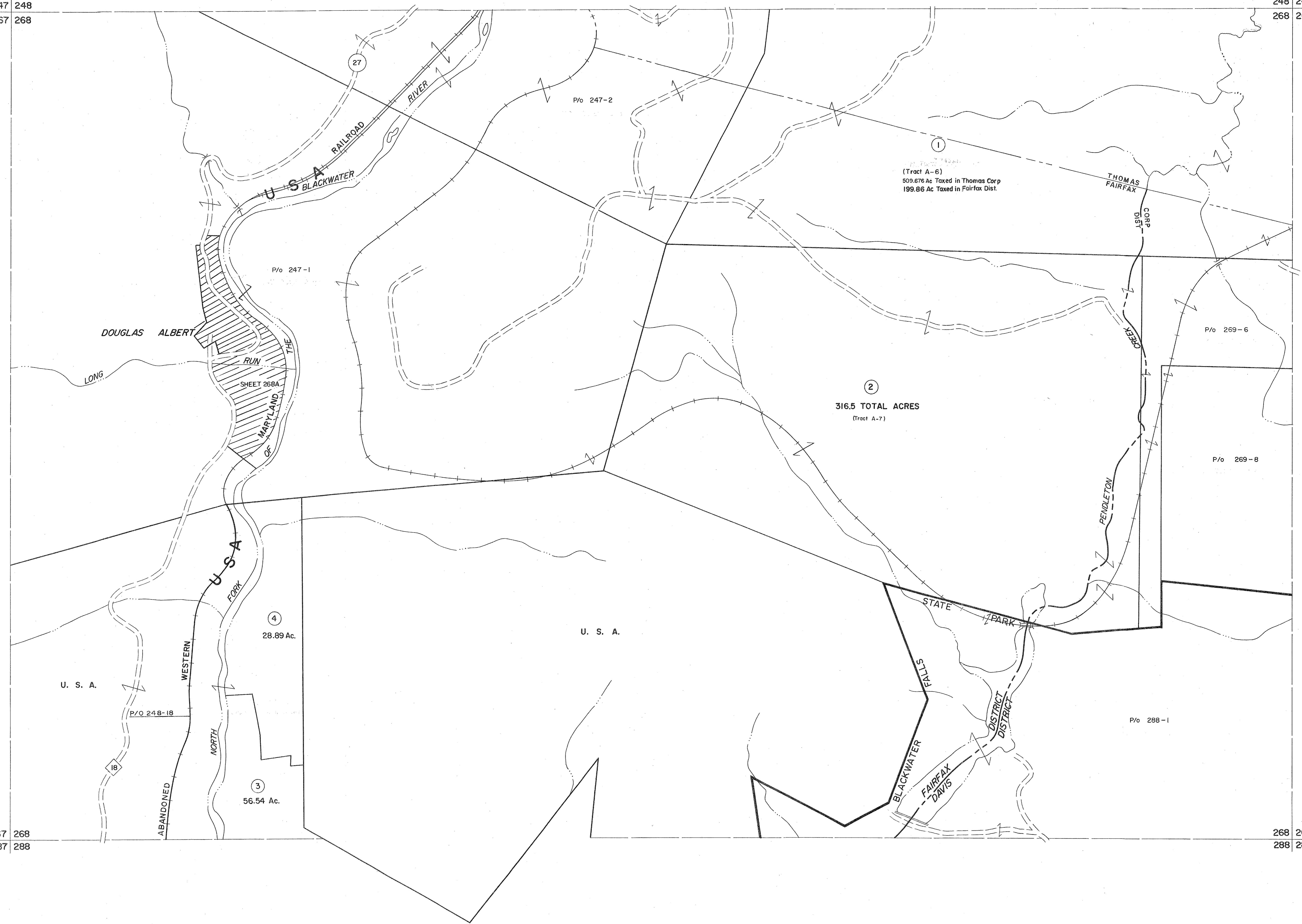


247 248
267 268

248 249
268 269

267 268
287 288

268 269
288 289



For Tax Purposes Only
 Prepared by
MICHAEL BAKER, JR., INC.
 Consulting Engineers
 Rochester, Pennsylvania

Legend	
Property line	Original lot line
Edge of pavement or roadway	Deed lot number
Corporation line	Parcel or index number
District line	Improvement
County line	Railroad

Revisions	
1 11-27-78 T.C.	9 SLS INC. - DDC 5/97
2 10-16-78 J.F.	10 SLS INC. 2/23/98 JWM
3 July 1986 TRL	11 ESI 2/20/03 REK
4 Rev. to 3-1-89 R.E.R.	12 3/21/05 S.B.H.
5 OGIS 1/26/93 DSH	13 6-22-02 H.S.
6 OGIS 12/12/93 SAJ	14 6-21-04 H.S.
7 OGIS 2-95 HD	15 5-4-13 H.S.
8 O.G.I.S. 4-1-96 J.E.B.	16

KEY MAP

248	249
267 268 269	268 269
288	289

TUCKER COUNTY
 STATE OF WEST VIRGINIA
 Office of Assessor

DISTRICT **FAIRFAX DAVIS**
 SHEET NO: 268
 Date, Aerial Photography: November, 1961 Date, Map: Dec., 1962
 Photo No. Scale: 1" = 400'