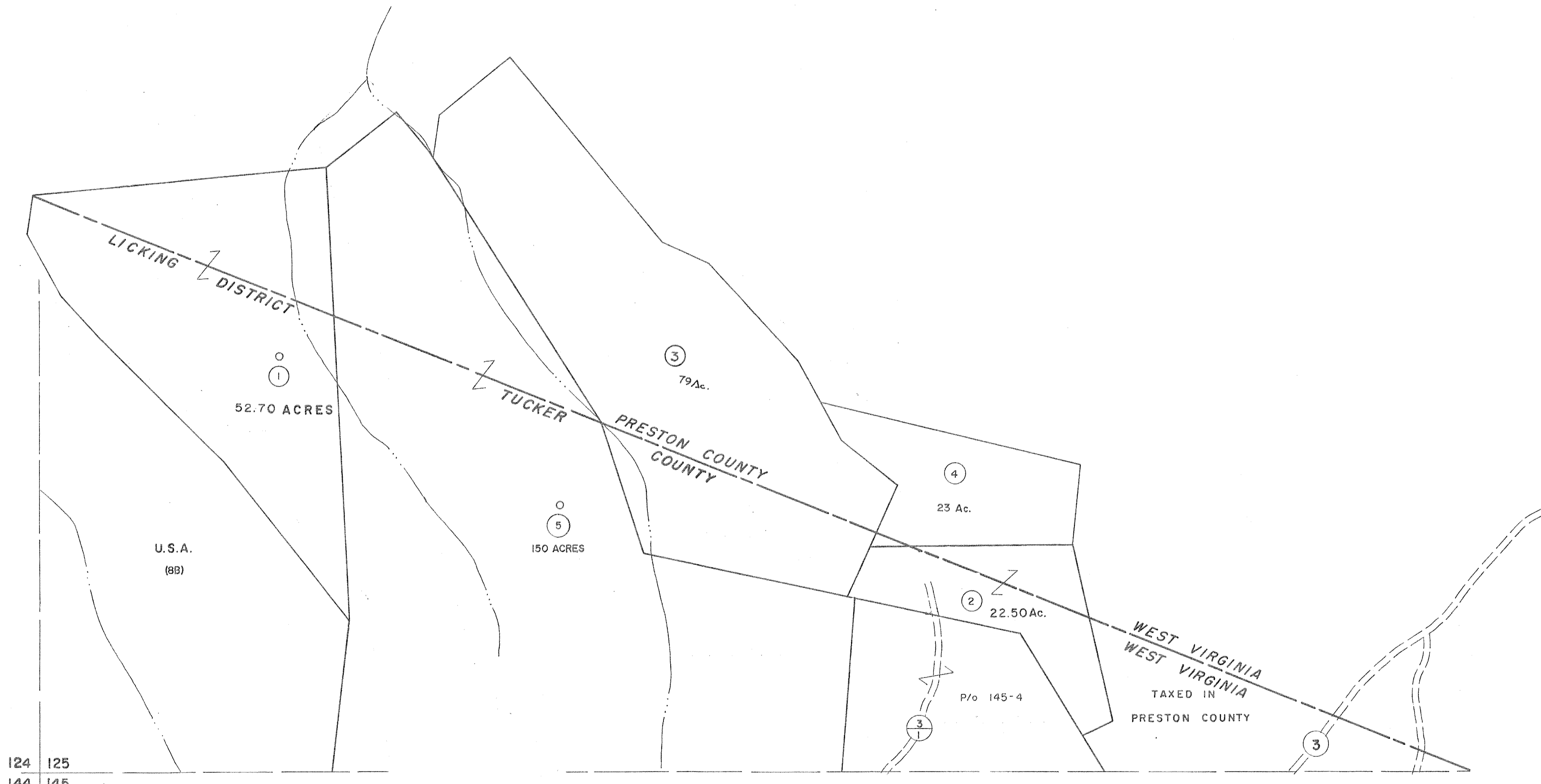


124 125

125



124 125
144 145

125
145 146

For Tax Purposes Only

Prepared by
MICHAEL BAKER, JR., INC.
Consulting Engineers
Rochester, Pennsylvania

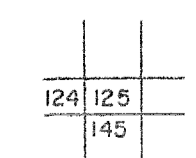
Legend

Property line	—	Original lot line	—
Edge of pavement or roadway	—	Deed lot number	(15)
Corporation line	—	Parcel or index number	(99)
District line	—	Improvement	0
County line	—	Railroad	—

Revisions

1	11/16/78	DG	9	SLS INC. - DDC 5/97	17
2	Revised 7-1-88	LP	10	5-8-10	18
3	7-1-84	L.E.S.	11	8-9-17	19
4	Revised 10-1-87	—	12	—	20
5	OGIS 12/29/90	DSH	13	—	21
6	OGIS 1/23/93	DSH	14	—	22
7	OGIS 12/9/93	SAJ	15	—	23
8	—	—	16	—	24

KEY MAP



TUCKER COUNTY
STATE OF WEST VIRGINIA
Office of Assessor

DISTRICT

LICKING

SHEET NO: 125

Date, Aerial Photography: November, 1961 Date, Map: Dec, 1962
Photo No: Scale: 1" = 400'