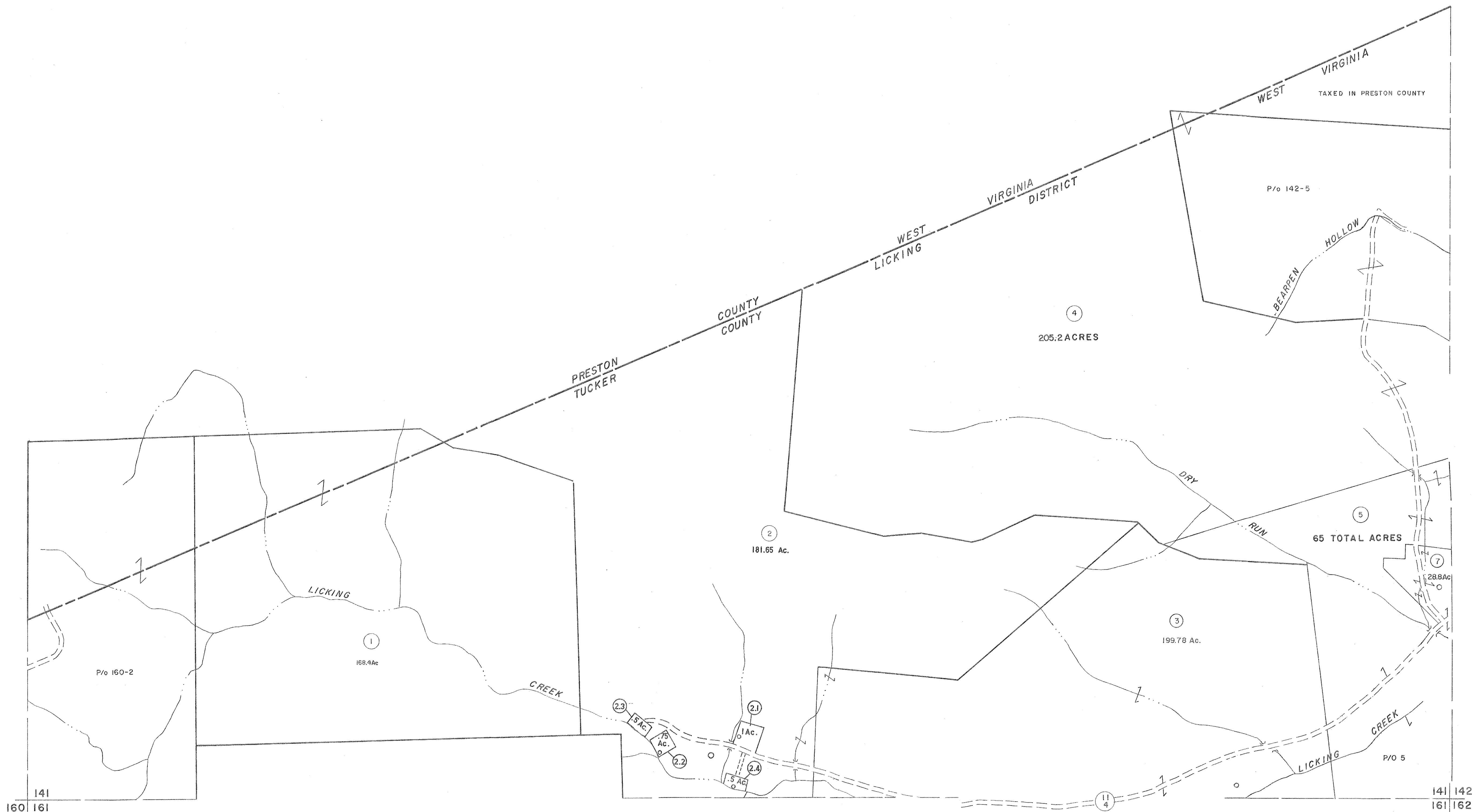


141

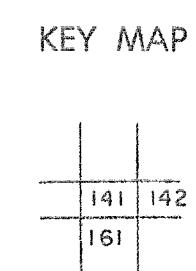
122
141 142



For Tax Purposes Only
 Prepared by
MICHAEL BAKER, JR., INC.
 Consulting Engineers
 Rochester, Pennsylvania

Legend	
Property line	-----
Edge of pavement or roadway	-----
Corporation line	-----
District line	-----
County line	-----
Original lot line	-----
Deed lot number	(15)
Parcel or index number	(99)
Improvement	o
Railroad	+

Revisions			
1	Revised to 7-1-83	9	8-9-17
2	7-1-84	10	SLS
3	REV. TO 7-1-86	11	18
4	OGIS 12/29/90	12	19
5	OGIS 3-19-92	13	20
6	OGIS 4-95	14	21
7	7/3/11	15	22
8	5-4-13	16	23
			24



TUCKER COUNTY
 STATE OF WEST VIRGINIA
 Office of Assessor

DISTRICT
LICKING
SHEET NO: 141
Date, Aerial Photography: November, 1961 Date, Map: Dec, 1962
Photo No: Scale: 1" = 400'