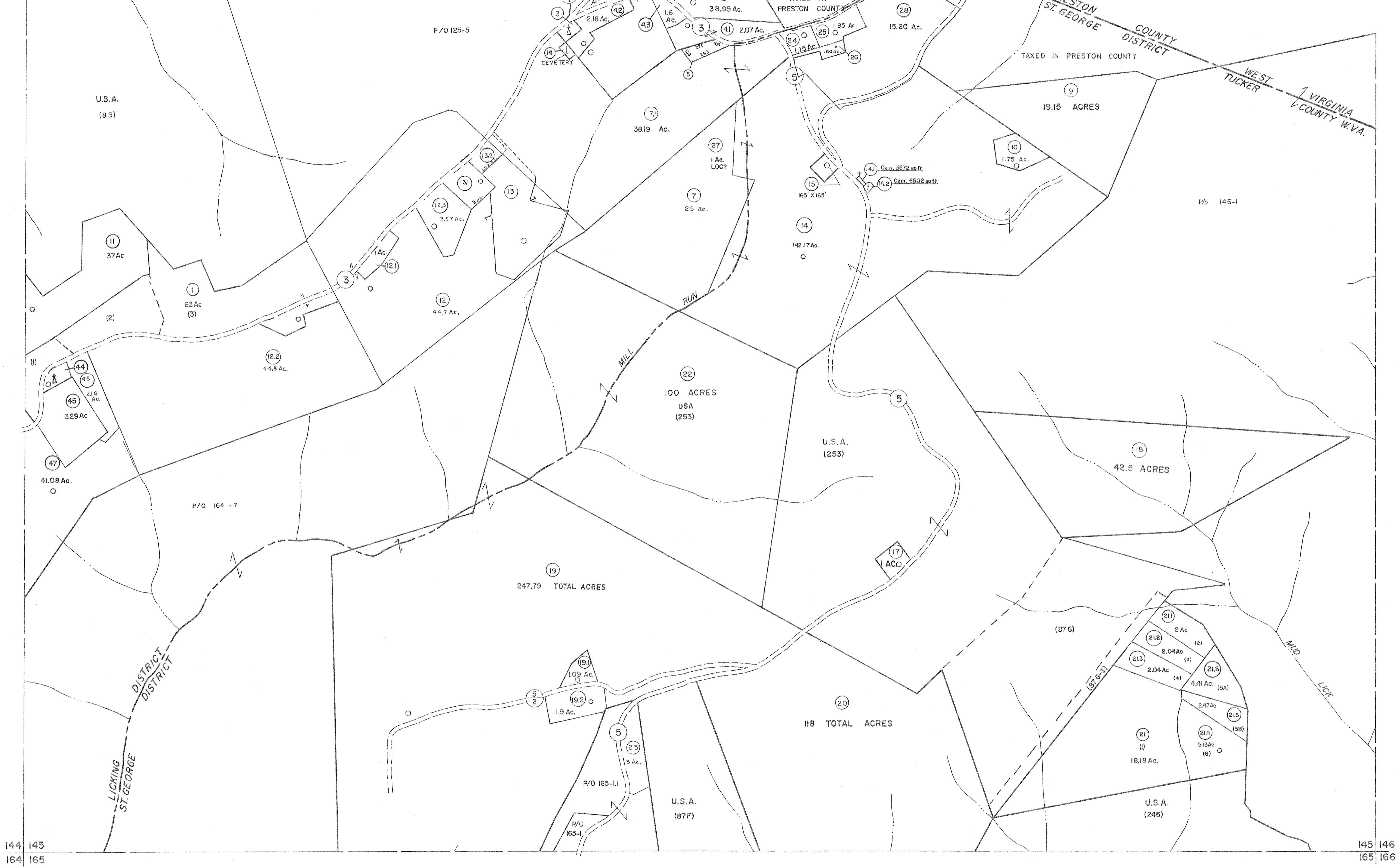


124 125
144 145

125 146
145 146



144 145
164 165

145 146
165 166

For Tax Purposes Only

Prepared by
MICHAEL BAKER, JR., INC.
Consulting Engineers
Rochester, Pennsylvania

Legend

Property line	—	Original lot line	—
Edge of pavement or roadway	—	Deed lot number	(15)
Corporation line	—	Parcel or index number	(17)
District line	—	Improvement	○
County line	—	Railroad	—

Revisions

1	6-3-64	9	OGIS 1/24/93	DSH	17	ESI 2/7/02	REK
2	4-9-75	10	OGIS 12/9/93	SAJ	18	3/28/06	SBH
3	11-16-78	11	O.G.I.S 4-1-98	J.E.B	19	3/24/07	SBH
4	Revised to 7-1-89	12	SLS INC. - DDC	5/97	20	6-22-08	HT-ES
5	7-1-84	13	SLS INC. - 2/19/98	DSW	21	6-21-09	HT-ES
6	REV TO 3-1-89	14	SLS INC. 1/27/99	DSW	22	5-8-10	HT-ES
7	OGIS 12/30/90	15	SLS INC. 3/1/00	JWM	23	5-4-13	HT-ES
8	OGIS 3-19-92	16	ESI 1/30/01	REK	24		

5/26/15
6-3-17
KEY MAP

125
144 145 146
165

TUCKER COUNTY
STATE OF WEST VIRGINIA
Office of Assessor

DISTRICT LICKING ST. GEORGE

SHEET NO: 145

Date, Aerial Photography: November, 1961 Date, Map: Dec., 1962
Photo No: Scale: 1"=400'