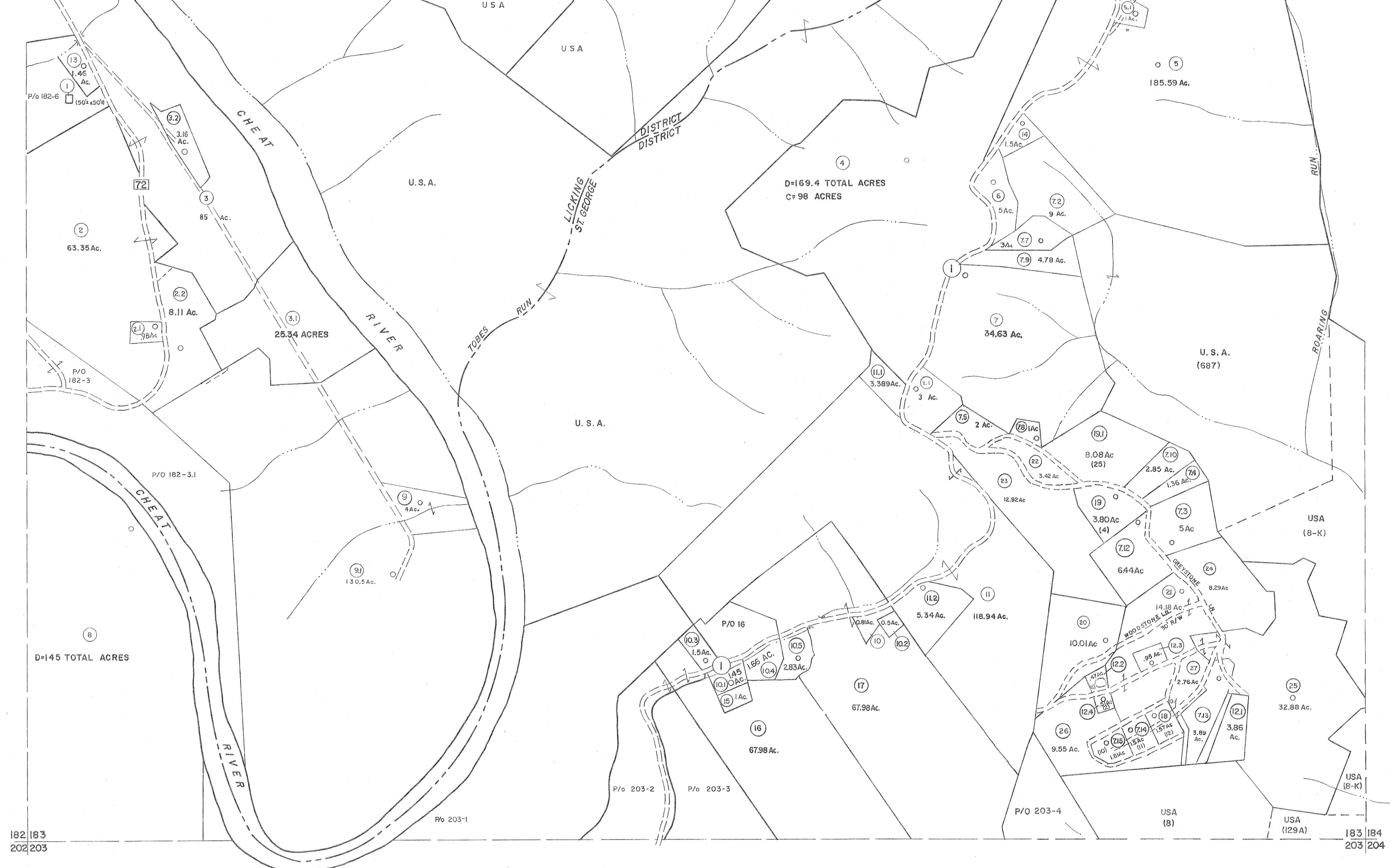


162 163
182 183

163 164
183 184

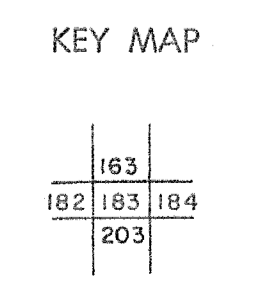


For Tax Purposes Only

Prepared by
MICHAEL BAKER, JR., INC.
Consulting Engineers
Rochester, Pennsylvania

Legend	
Property line	Original lot line
Edge of pavement or roadway	Dead lot number (15)
Corporation line	Parcel or index number (22)
District line	Improvement
County line	Railroad

Revisions					
1	6-6-75	JC	9	0915	3-19-92 TL
2	11/20/78	DG	10	0615	1/24/93 DSH
3	7-1-83	C.R.	11	0615	12/11/93 SAJ
4	7-1-84	L.F.S.	12	SLS INC.	2/19/98 DSW
5	REV. TO 7-1-86	NCS	13	HBS	2/22/04
6	Revised 10-1-87	DL	14		3/21/05 SBH
7	REV. TO 3-1-89	NCS	15		3/24/07 SBH
8	0915	12/30/90	DSH	16	5-8-10 H-4-3



TUCKER COUNTY
STATE OF WEST VIRGINIA
Office of Assessor

DISTRICT LICKING ST. GEORGE

SHEET NO: 183

Date, Aerial Photography: Nov., 1961 Date, Map: Dec., 1962
Photo No: Scale: 1" = 400'