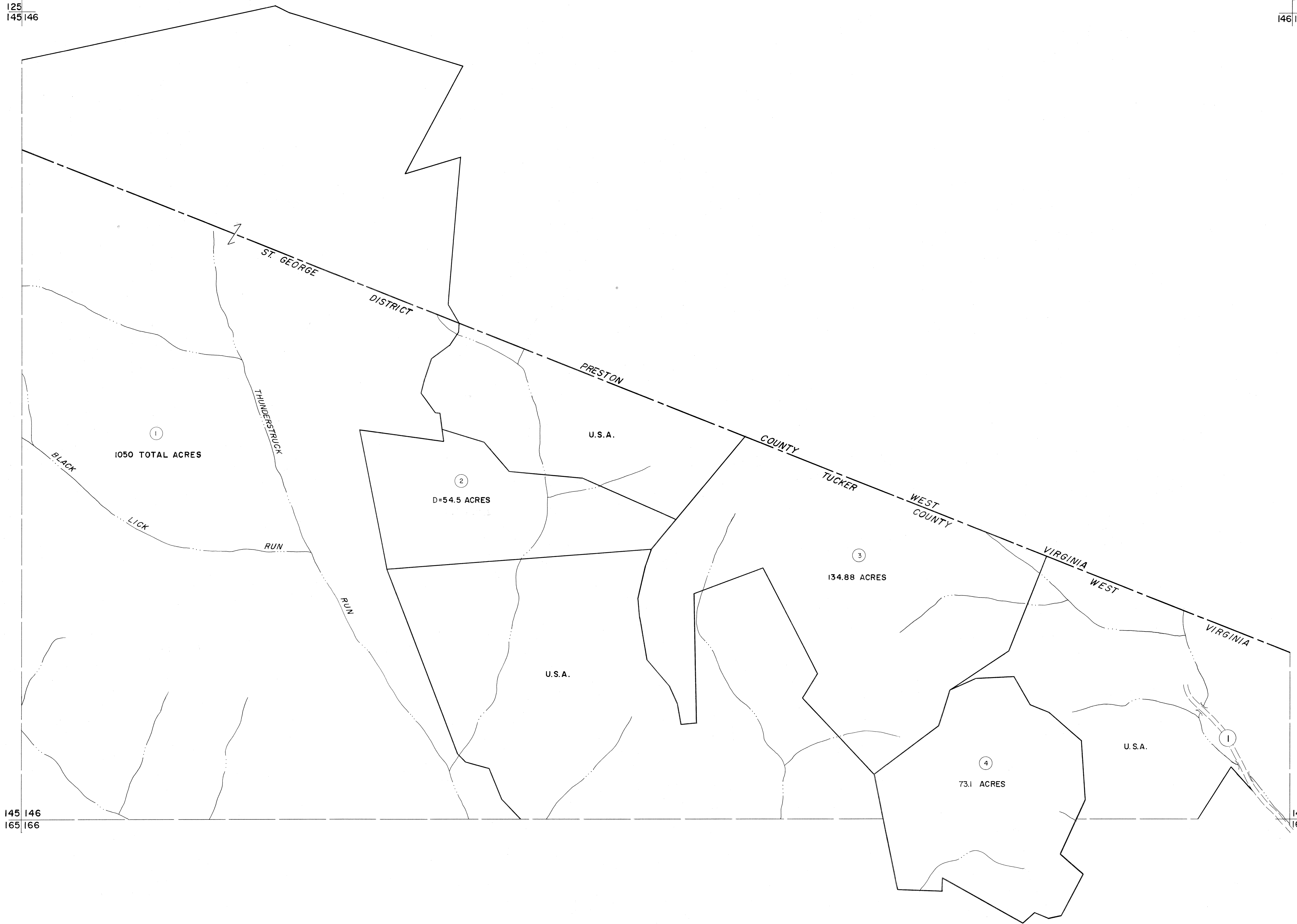


125
145 146

146 147



145 146
165 166

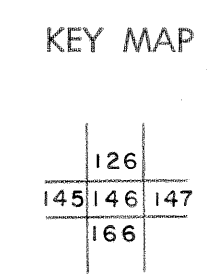
147
167

For Tax Purposes Only

Prepared by
MICHAEL BAKER, JR., INC.
Consulting Engineers
Rochester, Pennsylvania

Legend	
Property line	Original lot line
Edge of pavement or roadway	Deed lot number
Corporation line	Parcel or index number
District line	Improvement
County line	Railroad

Revisions			
1	OGIS	1/6/91	DSH
2	OGIS	3-19-92	TL
3			
4			
5			
6			
7			
8			



TUCKER COUNTY
STATE OF WEST VIRGINIA
Office of Assessor

DISTRICT	ST. GEORGE
SHEET NO:	146
Date, Aerial Photography:	November, 1961
Date, Map:	Dec. 1962
Photo No:	
Scale:	1" = 400'